



HEIDENHAIN



HEIDENHAIN Motors

For Axis and Spindle Drives

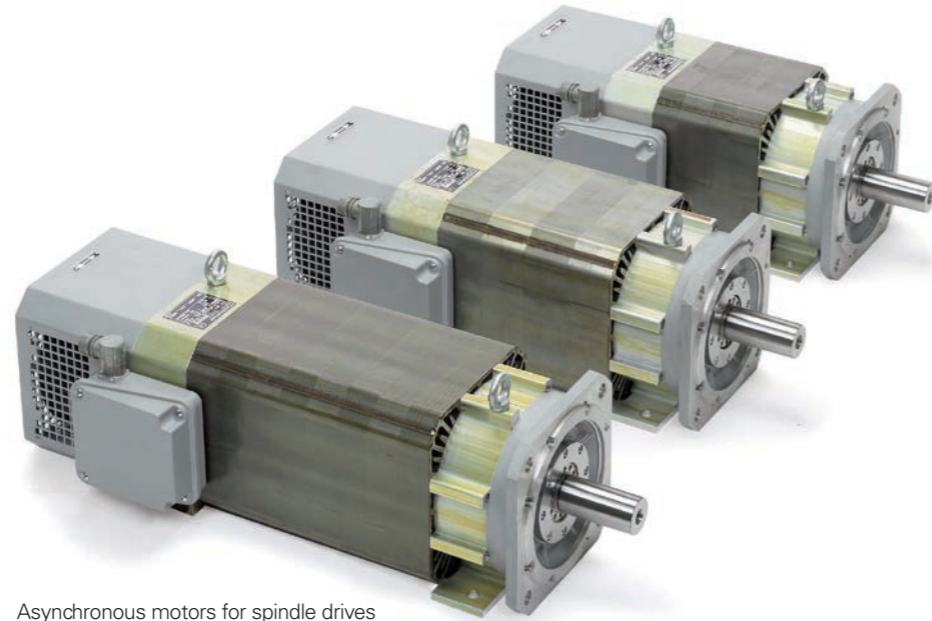
Information for the
Machine Tool Builder

Motors for axis and spindle drives

HEIDENHAIN supplies motors for axis and spindle drives as accessories to its controls with integrated inverter.

This brochure provides an overview of the available motors as well as information about the specifications and mating dimensions.

For initial setup, please request the *Motors* Technical Manual.



Asynchronous motors for spindle drives



Synchronous motors for feed drives

Intended use

The products described in this brochure

- may be used only for NC-controlled machine tools
- should be operated only with controls and inverters from HEIDENHAIN. Operation with non-HEIDENHAIN controls or inverters requires prior consultation with HEIDENHAIN
- may be used only in an industrial setting, for commercial applications, or in research institutions
- may be operated only in accordance with the product requirements (specifications, environmental data, safety instructions, etc.)

If the devices are used as a part of a safety function, then the machine manufacturer must ensure that the final product fulfills all requirements of the Machinery Directive (2006/42/EC).

Improper use

The devices are not intended for applications in areas where a failure would result in considerable risk to humans or the environment. Usage in potentially explosive atmospheres is prohibited.

Parts subject to wear

HEIDENHAIN motors contain components that are subject to wear depending on the application and how they are deployed. This especially applies to the following parts:

- Bearings
- Brakes
- Radial shaft seal rings
- Fans

This brochure supersedes all previous editions, which thereby become invalid. The basis for ordering from HEIDENHAIN is always the brochure edition valid when the order is placed.

Standards (ISO, EN, etc.) apply only where explicitly stated in the brochure.

Synchronous motors	QSY overview		4
	Specifications	Series QSY 96	8
		Series QSY 116 QSY 116 EcoDyn	10
		Series QSY 130 EcoDyn	12
		Series QSY 155	14
		Series QSY 155 EcoDyn	16
		Series QSY 190 EcoDyn	18
		Series QSY 260 EcoDyn	20
QSY torque characteristics		22	
Cables and connectors		25	
Asynchronous motors	QAN overview		26
	Specifications	Series QAN 200	30
		Series QAN 260	32
		Series QAN 320	34
		QAN 200UH	36
		Series QAN 260xH	38
		Series QAN 360UHW	40
		QAN power and torque characteristics	
Cables		48	
Accessories	Toroidal cores M23 connector set		50
	Direct drive torque motors		51

Synchronous motors

QSY overview

General technical information

Synchronous motors from HEIDENHAIN fulfill all requirements of an NC-controlled machine tool. Some special characteristics include

- an excellent running smoothness,
- an appropriate mass moment of inertia,
- a very good ratio of the rated torque to the stall torque,
- and a low torque ripple.

When used in conjunction with Gen 3 drives, motors must be operated only with a DC-link voltage of 650 V.

Specifications

The specifications and characteristic curves apply to motors mounted without thermal insulation. The temperature of the winding may differ from the maximum permissible ambient temperature of 40 °C by a maximum of 100 K. If the motor is mounted so that it is thermally insulated, the motor torque must be reduced in order to avoid thermal overloading.

For motors with ECN 1313 or EQN 1325 absolute rotary encoders, the rated torque is reduced by 10 %.

Speed measurement

Synchronous motors from HEIDENHAIN operate with sinusoidal commutation. An integrated rotary encoder from HEIDENHAIN measures the rotor position and shaft speed. The following versions are available (see *Specifications*):

- ERN 1387 incremental rotary encoder with $\sim 1 V_{PP}$ interface, or
- ECN 1313 absolute singleturn rotary encoder with EnDat2.2/01 interface (only one motor revolution can be evaluated), or
- EQN 1325 absolute multiturn rotary encoder with EnDat2.2/01 interface

Mechanical service life

The service life of the bearings depends on the shaft load and the average shaft speed (see the *Motors Technical Manual*).

For QSY motors, the rated bearing service life is 30000 hours, which is motor-specific and applies to a certain maximum shaft load at an average speed.

EcoDyn motors

Motors of the EcoDyn series are characterized by reduced current consumption together with a higher rated torque and a max. permissible rated speed of 3000 rpm (QSY 260: 2000 rpm). The following controls are required in order to drive the motors in EcoDyn mode:

- iTNC 530
- TNC 640
- TNC 620
- MANUALplus 620
- CNC PILOT 640

For all other controls, the rated speed is 2000 rpm.

Electronic ID label

The synchronous motors with ECN 1313 or EQN 1325 rotary encoder feature an electronic ID label that allows for easy commissioning and diagnosis. The information, such as motor designation, ID number or serial number, stored in this ID label can be read and displayed by the internal diagnostic function DriveDiag of HSCI controls. Thus, the control automatically recognizes the motor type every time it is switched on.

Functional safety

All current QSY motor variants described in this brochure provide a fault exclusion for the loosening of the mechanical connection between the encoder and the motor. This prevents any unintended loosening of the rotor and stator coupling.

Safety-related parameters for the motors or the encoders used within them are available upon request (e.g., MTTF values, data for fault exclusion).

Installation elevation

HEIDENHAIN motors may be installed up to an elevation of 1000 m above sea level. For installation elevations above 1000 m, additional cooling measures are required.

Thermal specifications

Natural cooling
Temperature monitoring with KTY 84-130 thermistor in the stator winding
Thermal class F

Mechanical parameters

Design: IM B5 (mounting via flange) as per EN 60034-7

Mounting the motor

The following screws are recommended for mounting the motor:

QSY 96	M6
QSY 116	M8
QSY 130	M8
QSY 155	M10
QSY 190	M12
QSY 260	M16

Flange: dimensions as per DIN EN 50347 and IEC 60072-1

Protection as per DIN EN 60529

- Motor: IP65
- Shaft exit: IP64

Suitability with regard to gears

Only for enclosed gears. The shaft is suitable only for dry connection.

Vibration severity

Grade A as per IEC 60034-14

Radial runout, concentricity, and axial runout
Tolerance N as per IEC 60072-1 (DIN 42955)

Shaft end

Cylindrical without keyway as per IEC 60072-1 with center hole and thread

Shaft with keyway and machine key as per DIN 6885 (upon request)

- QSY 96: A 6 x 6 x 32
- QSY 116: A 8 x 7 x 40
- QSY 130: A 8 x 7 x 40
- QSY 155: A 10 x 8 x 50
- QSY 190: A 10 x 8 x 70
- QSY 260: A 14 x 9 x 70

The motors with machine key are half-key balanced as per ISO 21940-32. Maintenance-free bearings
Holding brake optionally with low backlash $\leq 1^\circ$



QSY 116 E



QSY 155 B



QSY 190 EcoDyn



QSY 96 G

Synchronous motors Used with 1xx inverter systems

Synchronous motors	Stall torque	Stall current	Rated speed	Recommended inverters ²⁾				Page
				1-axis module	2-axis module	Compact inverters/axis		
						UR 2xxD UE 2xxB	UE 1xx	
QSY 96A	1.5 Nm	1.5 A	4500 rpm	UM 111 D	UM 121 D	1 to 4	1 to 4	8
QSY 96G	5.2 Nm	5.2 A	4500 rpm	UM 111 D	UM 121 D	1 to 4	1 to 4	
QSY 116C	5.2 Nm	3.3 A	3000 rpm	UM 111 D	UM 121 D	1 to 4	1 to 4	10
QSY 116E	7.2 Nm	4.8 A	3000 rpm	UM 111 D	UM 121 D	1 to 4	4	
QSY 116J	10.0 Nm	6.8 A	3000 rpm	UM 111 D	UM 121 D	1 to 4	4	
QSY 116J EcoDyn	10.0 Nm	5.0 A	3000 rpm	UM 111 D	UM 121 D	1 to 4	4	
QSY 130C EcoDyn	6.0 Nm	3.0 A	3000 rpm	UM 111 D	UM 121 D	1 to 4	1 to 4	12
QSY 130E EcoDyn	9.0 Nm	4.5 A	3000 rpm	UM 111 D	UM 121 D	1 to 4	1 to 4	
QSY 155B	13.0 Nm	9.1 A	3000 rpm	UM 111 BD	UM 121 BD	4	–	14
QSY 155C	17.7 Nm	11.8 A	3000 rpm	UM 111 BD	UM 121 BD	4	–	
QSY 155D	21.6 Nm	14.6 A	3000 rpm	UM 111 BD	UM 121 BD	4	–	
QSY 155F	26.1 Nm	18.0 A	3000 rpm	UM 112 D	UM 122 D	4 ¹⁾	–	
QSY 155B EcoDyn	13.0 Nm	6.5 A	3000 rpm	UM 111 D	UM 121 D	1 to 4	–	16
QSY 155C EcoDyn	17.7 Nm	8.5 A	3000 rpm	UM 111 BD	UM 121 BD	4	–	
QSY 155D EcoDyn	21.6 Nm	10.6 A	3000 rpm	UM 111 BD	UM 121 BD	4	–	
QSY 155F EcoDyn	26.1 Nm	12.8 A	3000 rpm	UM 111 BD	UM 121 BD	4	–	
QSY 190C EcoDyn	28.0 Nm	14.0 A	3000 rpm	UM 111 BD	UM 121 BD	4	–	18
QSY 190D EcoDyn	38.0 Nm	18.1 A	3000 rpm	UM 112 D	UM 122 D	4 ¹⁾	–	
QSY 190F EcoDyn	47.6 Nm	22.7 A	3000 rpm	UM 112 D	UM 122 D	4 ¹⁾	–	
QSY 190K EcoDyn	62.5 Nm	29.8 A	3000 rpm	UM 113 D	–	–	–	
QSY 260B EcoDyn	85.0 Nm	31.0 A	2000 rpm	UM 114 D	–	–	–	20
QSY 260C EcoDyn	120 Nm	43.5 A	2000 rpm	UM 115 D	–	–	–	

¹⁾ Only UE 242 B, UR 242 D

²⁾ The maximum acceleration of the motor might not be achievable with the recommended inverters.
If necessary, a more powerful power module must be selected.

Used with Gen 3 drives

Synchronous motors	Stall torque	Stall current	Rated speed	Recommended inverters ¹⁾					Page
				1-axis module	2-axis module	Compact inverters/axis			
						UEC 31x	UEC 32x	UEC 33x	
QSY 96A	1.5 Nm	1.5 A	4500 rpm	UM 310	UM 320	1 to 5	1 to 2	1 to 5	8
QSY 96G	5.2 Nm	5.2 A	4500 rpm	UM 310	UM 320	1 to 5	1 to 2	1 to 5	
QSY 116C	5.2 Nm	3.3 A	3000 rpm	UM 310	UM 320	1 to 5	1 to 2	1 to 5	10
QSY 116E	7.2 Nm	4.8 A	3000 rpm	UM 310	UM 320	1 to 5	1 to 2	1 to 5	
QSY 116J	10.0 Nm	6.8 A	3000 rpm	UM 310	UM 320	1 to 5	1 to 2	1 to 5	
QSY 116J EcoDyn	10.0 Nm	5.0 A	3000 rpm	UM 310	UM 320	1 to 5	1 to 5	1 to 5	
QSY 130C EcoDyn	6.0 Nm	3.0 A	3000 rpm	UM 310	UM 320	1 to 5	1 to 5	1 to 5	12
QSY 130E EcoDyn	9.0 Nm	4.5 A	3000 rpm	UM 310	UM 320	1 to 5	1 to 5	1 to 5	
QSY 155B	13.0 Nm	9.1 A	3000 rpm	UM 310	UM 320	1 to 2	1 to 5	1 to 5	14
QSY 155C	17.7 Nm	11.8 A	3000 rpm	UM 311	UM 321	1 to 2	1 to 2	1 to 5	
QSY 155D	21.6 Nm	14.6 A	3000 rpm	UM 311	UM 321	1 to 2	1 to 2	1 to 5	
QSY 155F	26.1 Nm	18.0 A	3000 rpm	UM 312	UM 322	–	1 to 2	1 to 2	
QSY 155B EcoDyn	13.0 Nm	6.5 A	3000 rpm	UM 310	UM 320	1 to 5	1 to 5	1 to 5	16
QSY 155C EcoDyn	17.7 Nm	8.5 A	3000 rpm	UM 310	UM 320	1 to 2	1 to 5	1 to 5	
QSY 155D EcoDyn	21.6 Nm	10.6 A	3000 rpm	UM 311	UM 321	1 to 2	1 to 2	1 to 5	
QSY 155F EcoDyn	26.1 Nm	12.8 A	3000 rpm	UM 311	UM 321	1 to 2	1 to 2	1 to 5	
QSY 190C EcoDyn	28.0 Nm	14.0 A	3000 rpm	UM 311	UM 321	1 to 2	1 to 2	1 to 5	18
QSY 190D EcoDyn	38.0 Nm	18.1 A	3000 rpm	UM 312	UM 322	–	1 to 2	1 to 2	
QSY 190F EcoDyn	47.6 Nm	22.7 A	3000 rpm	UM 312	UM 322	–	–	1 to 2	
QSY 190K EcoDyn	62.5 Nm	29.8 A	3000 rpm	UM 313	–	–	–	1	
QSY 260B EcoDyn	85.0 Nm	31.0 A	2000 rpm	UM 313	–	–	–	1	20
QSY 260C EcoDyn	120 Nm	43.5 A	2000 rpm	UM 313	–	–	–	–	

¹⁾ The maximum acceleration of the motor might not be achievable with the recommended inverters.
If necessary, a more powerful power module must be selected.

Synchronous motors

QSY 96 series

Feed motors with three pole pairs

- Stall torque: 1.5 Nm and 5.2 Nm
- Choice of incremental or absolute rotary encoder

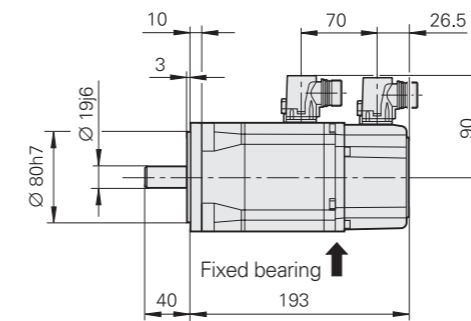


Motor	QSY 96A		QSY 96G	
Rated voltage U_N	310 V/308 V		291 V/290 V	
Rated power output P_N	0.5 kW/0.45 kW		1.4 kW/1.3 kW	
Rated speed n_N	4500 rpm			
Rated torque $M_N^{1)}$	1.05 Nm/0.95 Nm		3.0 Nm/2.7 Nm at 4500 rpm	
Rated current $I_N^{1)}$	1.1 A/1.0 A		3.3 A/3.0 A	
Stall torque $M_0^{1)}$	1.5 Nm		5.2 Nm	
Stall current $I_0^{1)}$	1.5 A		5.2 A	
Max. speed n_{max}	6000 rpm			
Max. torque $M_{max}^{2)}$	5.5 Nm		22 Nm	
Max. current $I_{max}^{2)}$	6.3 A		25.4 A	
Mass m	3.6 kg	4.5 kg	7.2 kg	8.1 kg
Rotor inertia J	1.8 kg·cm ²	2.1 kg·cm ²	6.3 kg·cm ²	6.6 kg·cm ²
Brake	Without	With	Without	With
Rated voltage U_{Br}	–	DC 24 V	–	DC 24 V
Rated current I_{Br}	–	0.5 A	–	0.5 A
Holding torque M_{Br}	–	5.0 Nm	–	5.0 Nm
ID				
Motor with ERN 1387	344512-0C	344512-0D	339875-0C	339875-0D
Motor with ECN 1313	344512-8C	344512-8D	339875-8C	339875-8D
Motor with EQN 1325	344512-5C	344512-5D	339875-5C	339875-5D

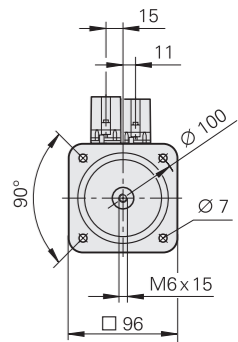
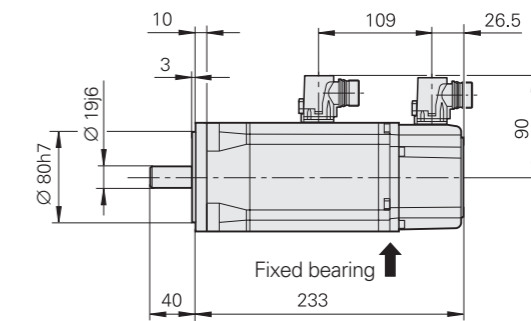
¹⁾ At 100 K ²⁾ Max. 200 ms

Italics: data for motors with ECN 1313 or EQN 1325 (rated torque reduced by 10 %)

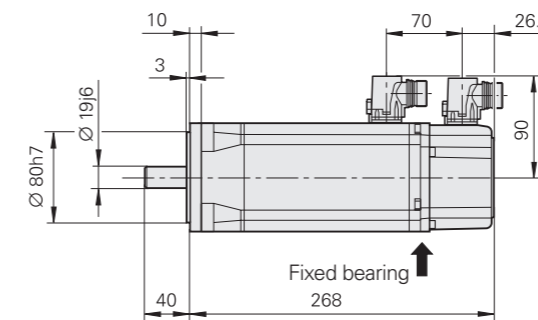
QSY 96A Without brake



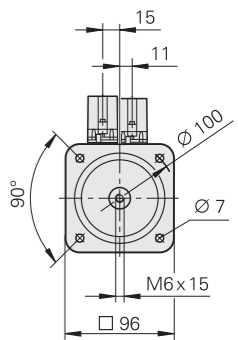
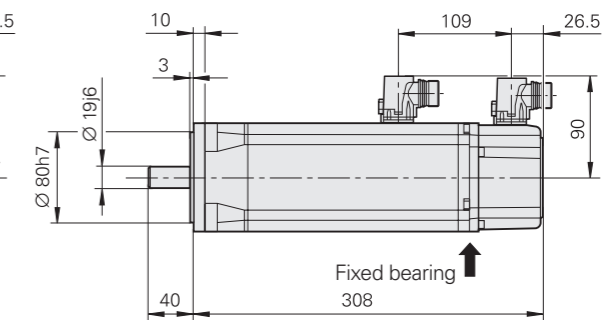
With brake



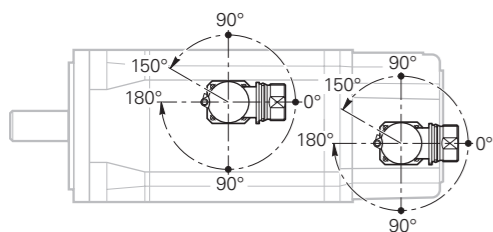
QSY 96G Without brake



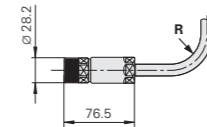
With brake



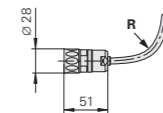
Rotatable connections



Power connector



Encoder connector



For **R** see page 25

mm
 Tolerancing ISO 8015
 ISO 2768 - m H
 ≤ 6 mm: ±0.2 mm

Synchronous motors

QSY 116 series

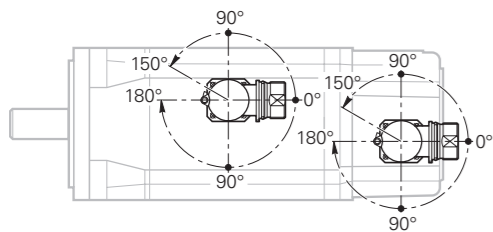
- Feed motors with three pole pairs
- Stall torque: 5.2 Nm to 10 Nm
 - Choice of incremental or absolute rotary encoder



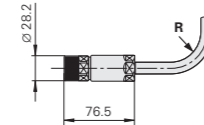
Motor	QSY 116C		QSY 116E		QSY 116J		QSY 116J EcoDyn	
Rated voltage U_N	315 V/311 V		302 V/299 V		290 V/288 V		408 V/405 V	
Rated power output P_N	1.45 kW/1.30 kW		1.85 kW/1.67 kW		2.42 kW/2.18 kW		2.64 kW/2.38 kW	
Rated speed n_N	3000 rpm						3000 rpm ³⁾	
Rated torque M_N ¹⁾	4.6 Nm/4.1 Nm		5.9 Nm/5.3 Nm		7.7 Nm/6.9 Nm		8.4 Nm/7.6 Nm	
Rated current I_N ¹⁾	3.3 A/3.0 A		4.1 A/3.7 A		5.4 A/4.8 A		4.3 A/3.9 A	
Stall torque M_0 ¹⁾	5.2 Nm		7.2 Nm		10.0 Nm		10.0 Nm	
Stall current I_0 ¹⁾	3.3 A		4.8 A		6.8 A		5.0 A	
Max. speed n_{max}	5400 rpm						4200 rpm ³⁾	
Max. torque M_{max} ²⁾	16 Nm		25 Nm		41 Nm		41 Nm	
Max. current I_{max} ²⁾	12.7 A		19.0 A		32.6 A		23.0 A	
Mass m	6.9 kg	7.8 kg	8.6 kg	9.5 kg	12.0 kg	13.3 kg	12.0 kg	13.3 kg
Rotor inertia J	7.5 kg·cm ²	7.9 kg·cm ²	9.9 kg·cm ²	10.3 kg·cm ²	15.0 kg·cm ²	15.4 kg·cm ²	15.0 kg·cm ²	15.4 kg·cm ²
Brake	Without	With	Without	With	Without	With	Without	With
Rated voltage U_{Br}	–	DC 24 V	–	DC 24 V	–	DC 24 V	–	DC 24 V
Rated current I_{Br}	–	0.6 A	–	0.6 A	–	0.85 A	–	0.85 A
Holding torque M_{Br}	–	13.5 Nm	–	13.5 Nm	–	13.5 Nm	–	13.5 Nm
ID								
Motor with ERN 1387	339876-0C	339876-0D	339877-0C	339877-0D	339878-0C	339878-0D	339878-1C	339878-1D
Motor with ECN 1313	339876-8C	339876-8D	339877-8C	339877-8D	–	–	339878-8C	339878-8D
Motor with EQN 1325	339876-5C	339876-5D	339877-5C	339877-5D	339878-5C	339878-5D	339878-6C	339878-6D

¹⁾ At 100 K ²⁾ Max. 200 ms ³⁾ In EcoDyn mode
Italics: data for motors with ECN 1313 or EQN 1325 (rated torque reduced by 10 %)

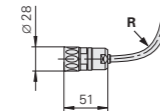
Rotatable connections



Power connector

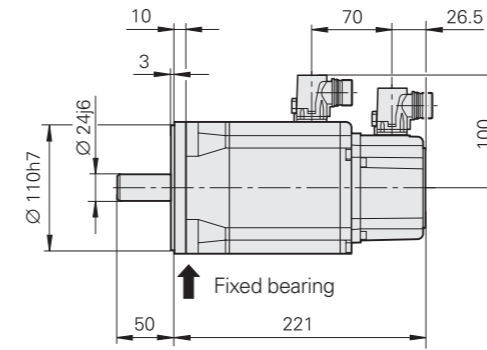


Encoder connector

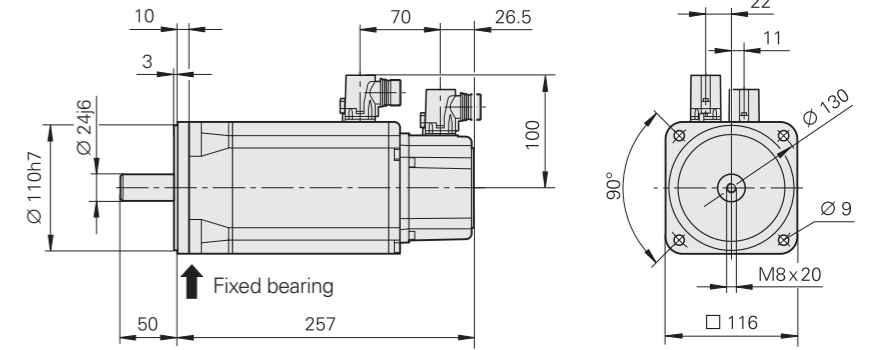


For **R** see page 25

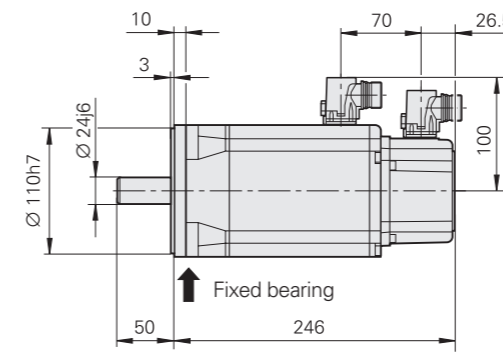
QSY 116C Without brake



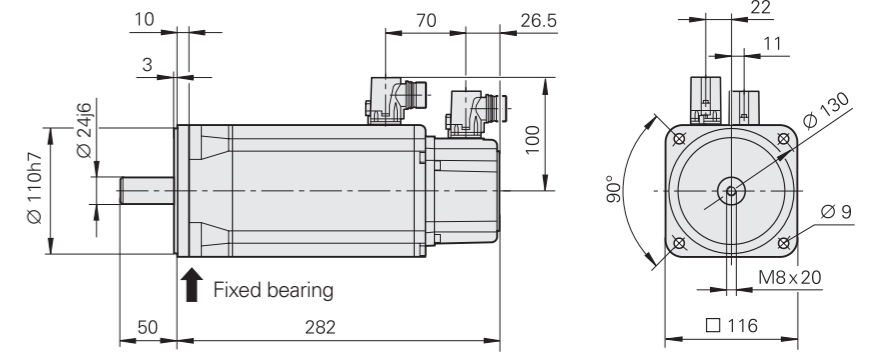
With brake



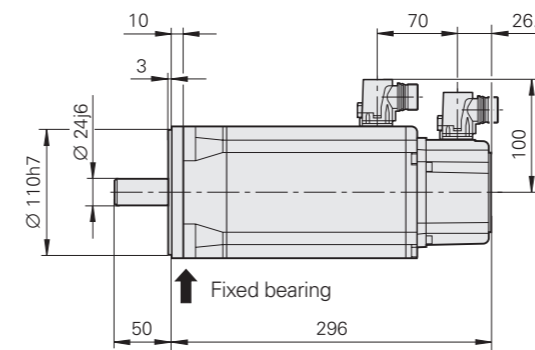
QSY 116E Without brake



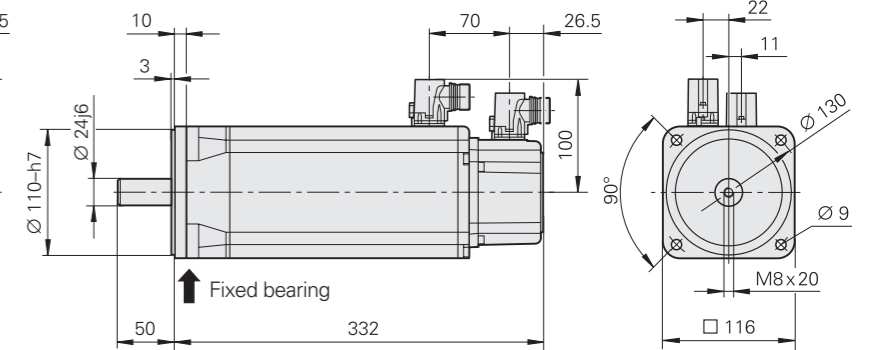
With brake



QSY 116J QSY 116J EcoDyn Without brake



With brake



mm

 Tolerancing ISO 8015
 ISO 2768 - m H
 ≤ 6 mm: ±0.2 mm

Synchronous motors

QSY 130 EcoDyn series

Feed motors with four pole pairs

- Stall torque: 6 Nm and 9 Nm
- Choice of incremental or absolute rotary encoder

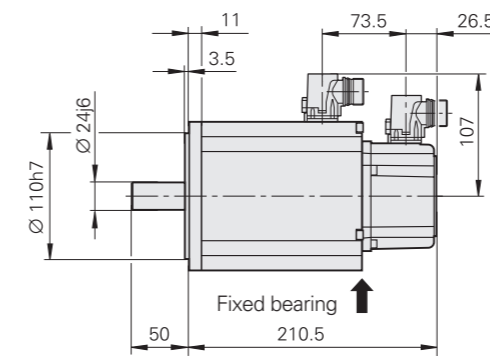


Motor	QSY 130C EcoDyn		QSY 130E EcoDyn	
Rated voltage U_N	415 V/411 V		407 V/403 V	
Rated power output P_N	1.6 kW/1.5 kW		2.3 kW/2.1 kW	
Rated speed n_N	3000 rpm (in EcoDyn mode)			
Rated torque $M_N^{1)}$	5.2 Nm/4.7 Nm		7.4 Nm/6.7 Nm	
Rated current $I_N^{1)}$	2.7 A/2.4 A		3.8 A/3.4 A	
Stall torque $M_0^{1)}$	6.0 Nm		9.0 Nm	
Stall current $I_0^{1)}$	3.0 A		4.5 A	
Max. speed n_{max}	4200 rpm (in EcoDyn mode)			
Max. torque $M_{max}^{2)}$	16 Nm		23 Nm	
Max. current $I_{max}^{2)}$	8.6 A		12.7 A	
Mass m	7.9 kg	8.8 kg	9.7 kg	10.6 kg
Rotor inertia J	16.0 kg·cm ²	16.4 kg·cm ²	21.0 kg·cm ²	21.4 kg·cm ²
Brake	Without	With	Without	With
Rated voltage U_{Br}	–	DC 24 V	–	DC 24 V
Rated current I_{Br}	–	0.6 A	–	0.6 A
Holding torque M_{Br}	–	13.5 Nm	–	13.5 Nm
ID				
Motor with ERN 1387	389053-1C	389053-1D	388422-1C	388422-1D
Motor with ECN 1313	389053-8C	389053-8D	388422-8C	388422-8D
Motor with EQN 1325	389053-6C	389053-6D	388422-6C	388422-6D

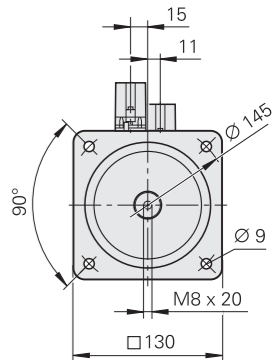
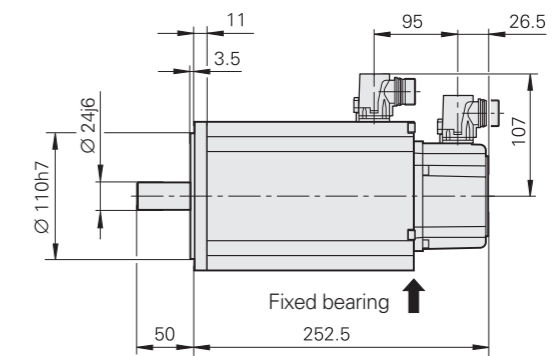
¹⁾ At 100 K ²⁾ Max. 200 ms

Italics: data for motors with ECN 1313 or EQN 1325 (rated torque reduced by 10 %)

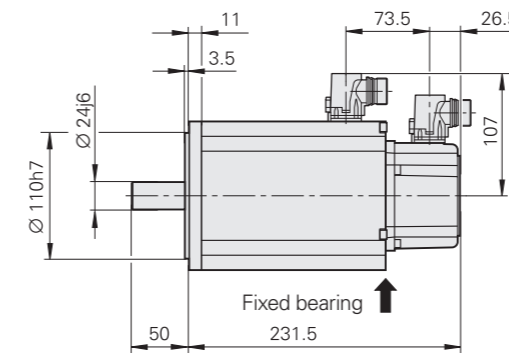
QSY 130C Without brake



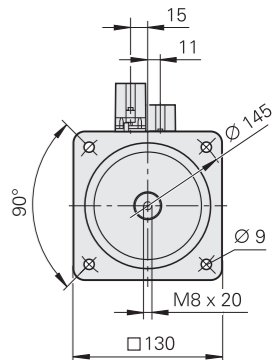
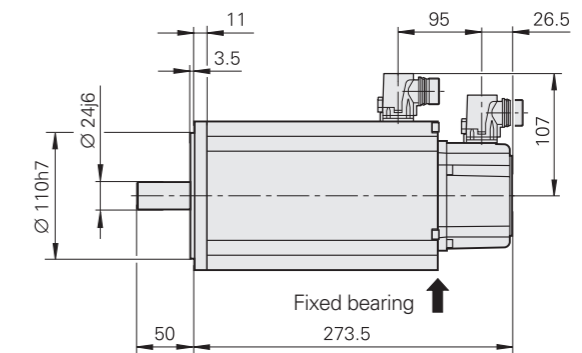
With brake



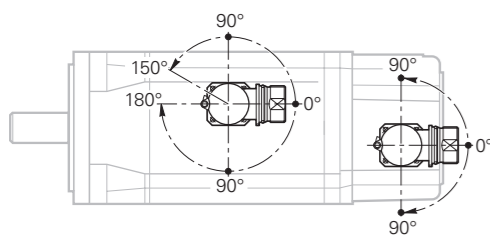
QSY 130E Without brake



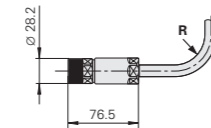
With brake



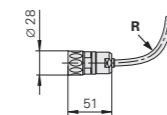
Rotatable connections



Power connector



Encoder connector



mm
 Tolerancing ISO 8015
 ISO 2768 - m H
 ≤ 6 mm: ±0.2 mm

For **R** see page 25

Synchronous motors

QSY 155 series

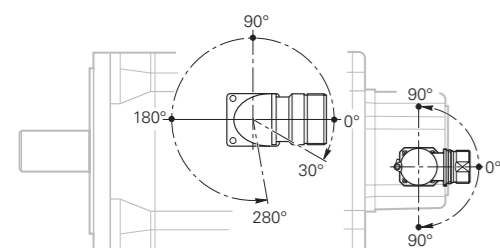
- Feed motors with four pole pairs
- Stall torque: 13 Nm to 26.1 Nm
 - Choice of incremental or absolute rotary encoder



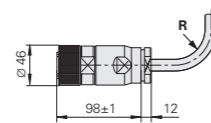
Motor	QSY 155B		QSY 155C		QSY 155D		QSY 155F	
Rated voltage U_N	298 V/295 V		294 V/291 V		293 V/291 V		289 V/287 V	
Rated power output P_N	2.9 kW/2.6 kW		3.9 kW/3.5 kW		4.6 kW/4.1 kW		5.2 kW/4.7 kW	
Rated speed n_N	3000 rpm							
Rated torque $M_N^{1)}$	9.2 Nm/8.3 Nm		12.5 Nm/11.3 Nm		14.8 Nm/13.3 Nm		16.7 Nm/15.0 Nm	
Rated current $I_N^{1)}$	6.9 A/6.2 A		8.7 A/7.8 A		10.6 A/9.5 A		12.0 A/10.8 A	
Stall torque $M_0^{1)}$	13.0 Nm		17.7 Nm		21.6 Nm		26.1 Nm	
Stall current $I_0^{1)}$	9.1 A		11.8 A		14.6 A		18.0 A	
Max. speed n_{max}	5000 rpm							
Max. torque $M_{max}^{2)}$	39 Nm		52 Nm		64 Nm		90 Nm	
Max. current $I_{max}^{2)}$	29.7 A		38.9 A		49.5 A		68.6 A	
Mass m	15.0 kg	18.0 kg	17.5 kg	20.5 kg	20.0 kg	23.0 kg	25.0 kg	28.0 kg
Rotor inertia J	33 kg·cm ²	35 kg·cm ²	43 kg·cm ²	45 kg·cm ²	54 kg·cm ²	56 kg·cm ²	75 kg·cm ²	77 kg·cm ²
Brake	Without	With	Without	With	Without	With	Without	With
Rated voltage U_{Br}	–	DC 24 V	–	DC 24 V	–	DC 24 V	–	DC 24 V
Rated current I_{Br}	–	1.04 A	–	1.04 A	–	1.04 A	–	1.04 A
Holding torque M_{Br}	–	40 Nm	–	40 Nm	–	40 Nm	–	40 Nm
ID								
Motor with ERN 1387	339880-0C	339880-0G	365308-0C	365308-0G	339881-0C	339881-0G	339882-0C	339882-0G
Motor with EQN 1325	339880-5C	339880-5G	365308-5C	365308-5G	339881-5C	339881-5G	339882-5C	339882-5G

¹⁾ At 100 K ²⁾ Max. 200 ms
Italics: data for motors with EQN 1325 (rated torque reduced by 10 %)

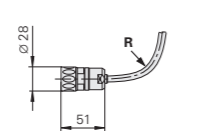
Rotatable connections



Power connector

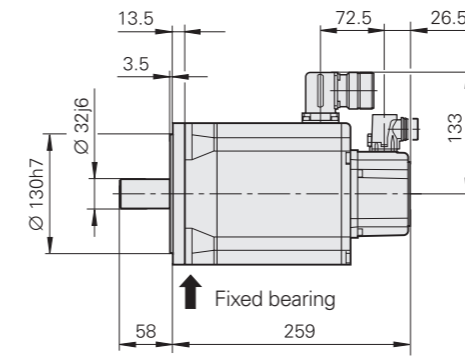


Encoder connector

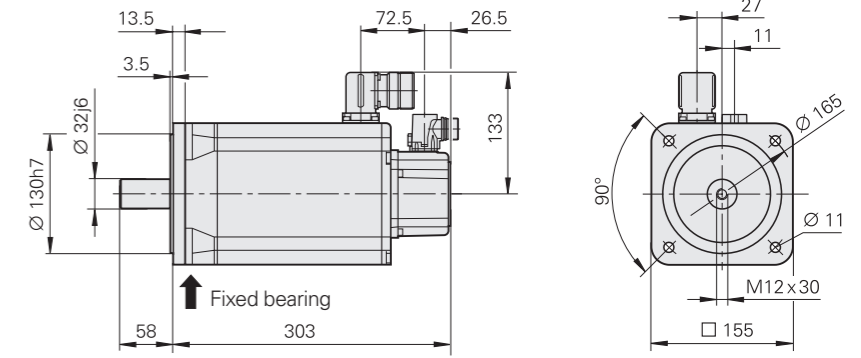


For **R** see page 25

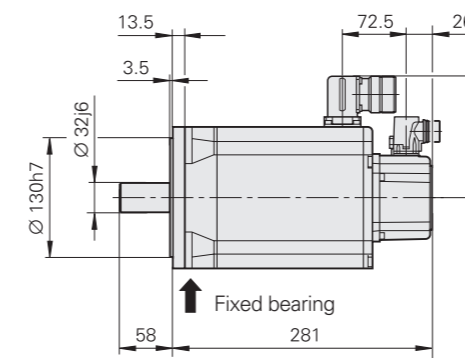
QSY 155B Without brake



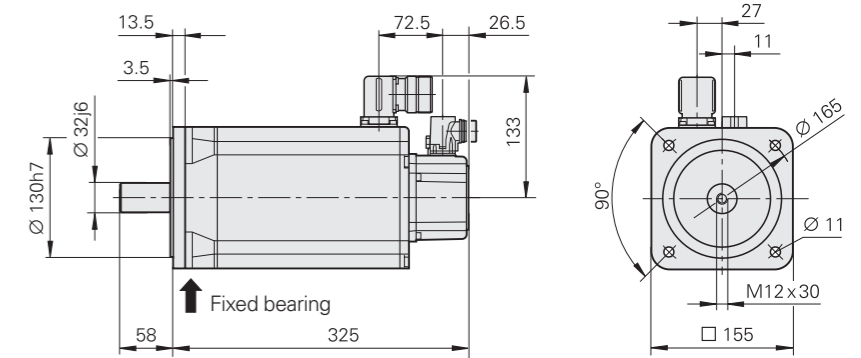
With brake



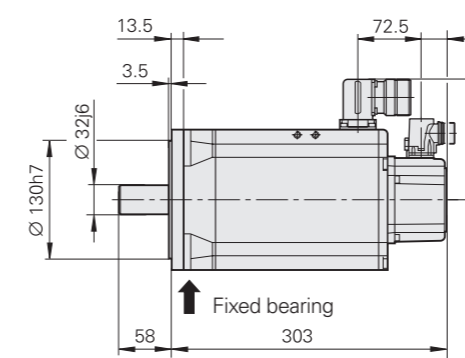
QSY 155C Without brake



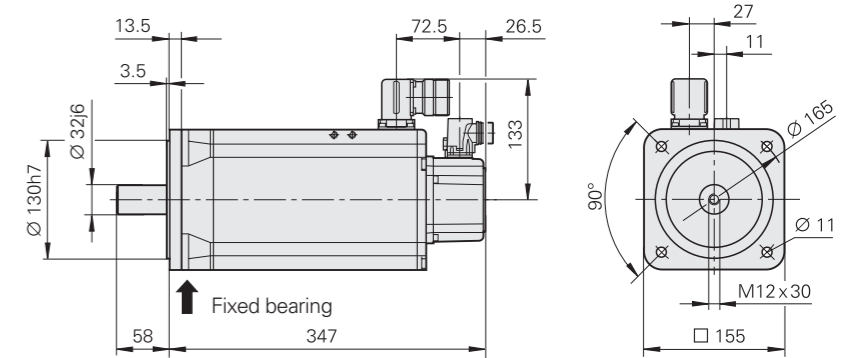
With brake



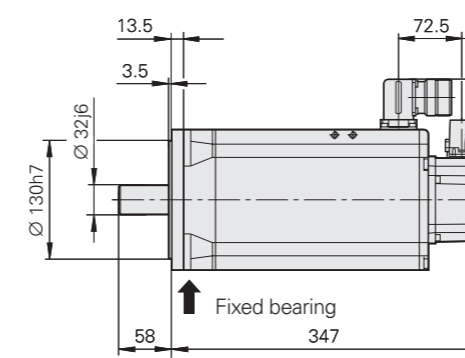
QSY 155D Without brake



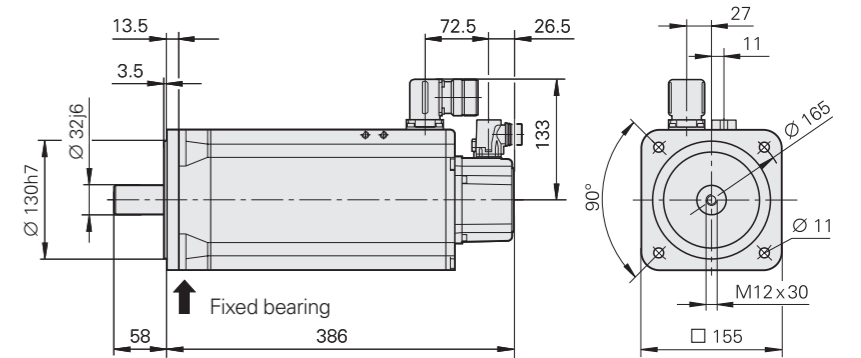
With brake



QSY 155F Without brake



With brake

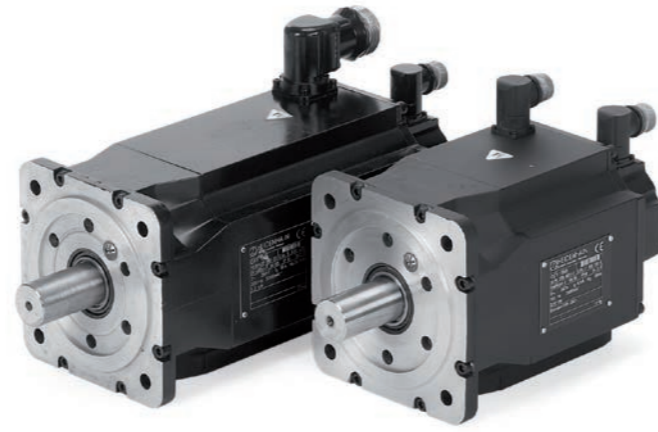


mm
 Tolerancing ISO 8015
 ISO 2768 - m H
 ≤ 6 mm: ±0.2 mm

Synchronous motors

QSY 155 EcoDyn series

- Feed motors with four pole pairs
- Stall torque: 13 Nm to 26.1 Nm
- Choice of incremental or absolute rotary encoder

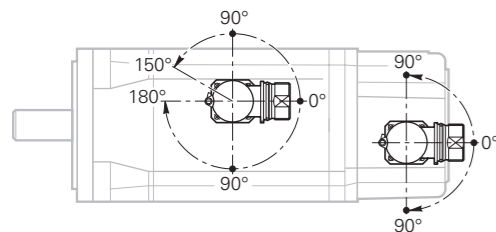


Motor	QSY 155B EcoDyn		QSY 155C EcoDyn		QSY 155D EcoDyn		QSY 155F EcoDyn	
Rated voltage U_N	417 V/412 V		420 V/415 V		412 V/407 V		399 V/397 V	
Rated power output P_N	3.5 kW/3.1 kW		5.0 kW/4.5 kW		5.7 kW/5.1 kW		6.0 kW/5.4 kW	
Rated speed n_N	3000 rpm (in EcoDyn mode)							
Rated torque $M_N^{1)}$	11.0 Nm/9.9 Nm		16.0 Nm/14.4 Nm		18.1 Nm/16.3 Nm		19.2 Nm/17.3 Nm	
Rated current $I_N^{1)}$	5.6 A/5.0 A		8.2 A/7.4 A		9.1 A/8.2 A		9.8 A/8.8 A	
Stall torque $M_0^{1)}$	13.0 Nm		17.7 Nm		21.6 Nm		26.1 Nm	
Stall current $I_0^{1)}$	6.5 A		8.5 A		10.6 A		12.8 A	
Max. speed n_{max}	4200 rpm (in EcoDyn mode)							
Max. torque $M_{max}^{2)}$	39 Nm		52 Nm		64 Nm		90 Nm	
Max. current $I_{max}^{2)}$	21.2 A		27.6 A		35.0 A		49.5 A	
Mass m	15.0 kg	18.0 kg	17.5 kg	20.5 kg	20.0 kg	23.0 kg	25.0 kg	28.0 kg
Rotor inertia J	33 kg·cm ²	35 kg·cm ²	43 kg·cm ²	45 kg·cm ²	54 kg·cm ²	56 kg·cm ²	75 kg·cm ²	77 kg·cm ²
Brake	Without	With	Without	With	Without	With	Without	With
Rated voltage U_{Br}	–	DC 24 V	–	DC 24 V	–	DC 24 V	–	DC 24 V
Rated current I_{Br}	–	1.04 A	–	1.04 A	–	1.04 A	–	1.04 A
Holding torque M_{Br}	–	40 Nm	–	40 Nm	–	40 Nm	–	40 Nm
ID								
Motor with ERN 1387	339880-1C	339880-1G	365308-1C	365308-1G	339881-1C	339881-1G	339882-1C	339882-1G
Motor with ECN 1313	339880-8C	339880-8G	365308-8C	365308-8G	339881-8C	339881-8G	339882-8C	339882-8G
Motor with EQN 1325	339880-6C	339880-6G	365308-6C	365308-6G	339881-6C	339881-6G	339882-6C	339882-6G

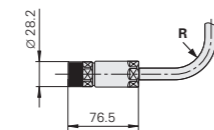
¹⁾ At 100 K ²⁾ Max. 200 ms

Italics: data for motors with ECN 1313 or EQN 1325 (rated torque reduced by 10 %)

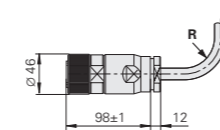
Rotatable connections



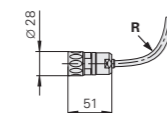
Power connector for QSY 155B/C/D EcoDyn



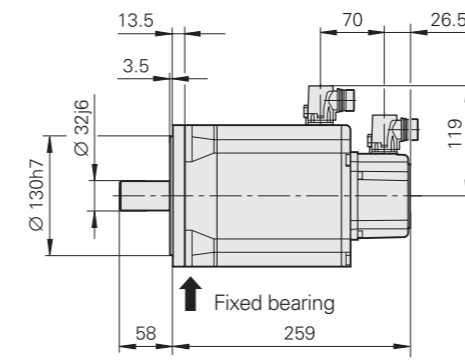
Power connector for QSY 155F EcoDyn



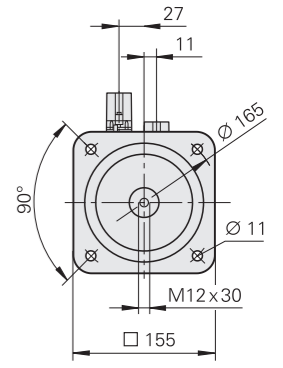
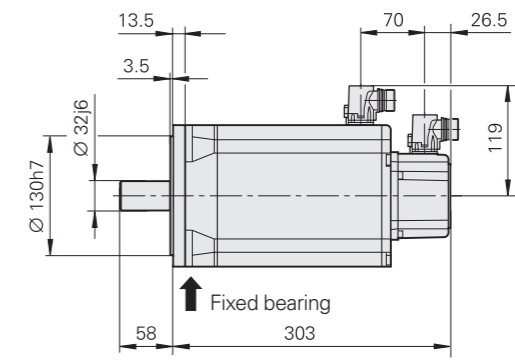
Encoder connector



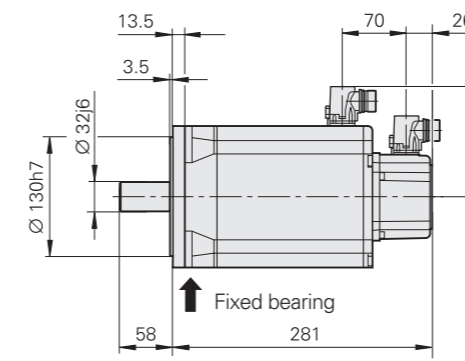
QSY 155B EcoDyn Without brake



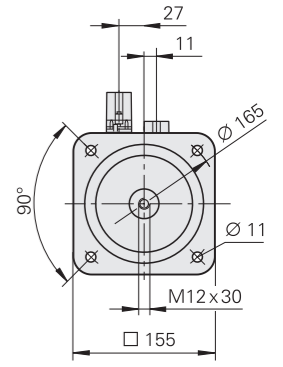
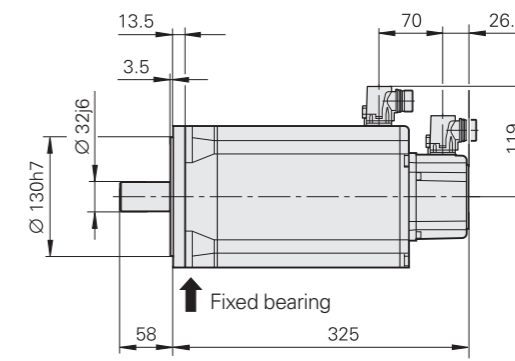
With brake



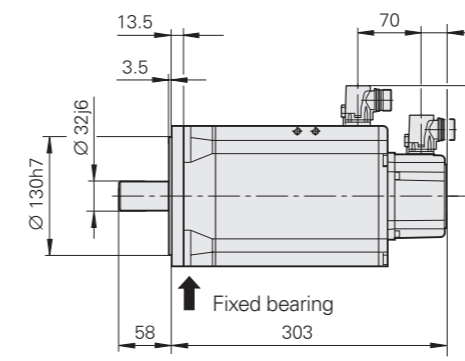
QSY 155C EcoDyn Without brake



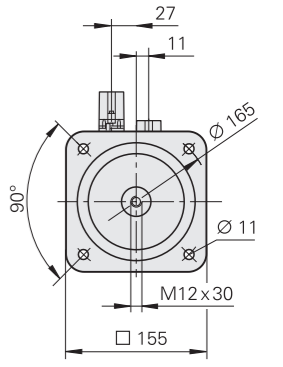
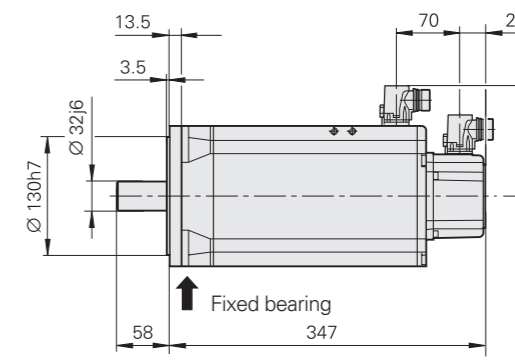
With brake



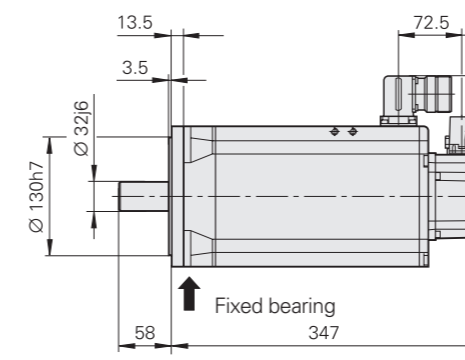
QSY 155D EcoDyn Without brake



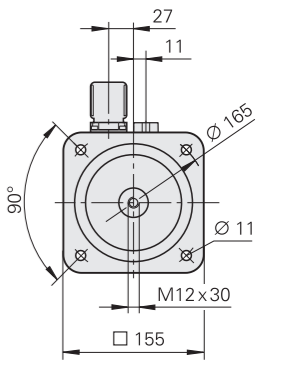
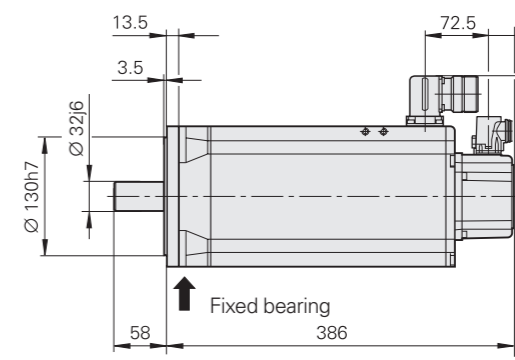
With brake



QSY 155F EcoDyn Without brake



With brake



mm
 Tolerancing ISO 8015
 ISO 2768 - m H
 ≤ 6 mm: ±0.2 mm

For **R** see page 25

Synchronous motors

QSY 190 EcoDyn series

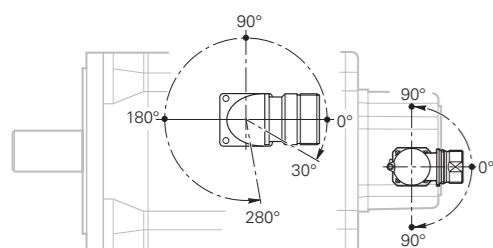
- Feed motors with four pole pairs
- Stall torque: 28 Nm to 62.5 Nm
- Choice of incremental or absolute rotary encoder



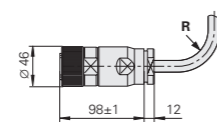
Motor	QSY 190C EcoDyn		QSY 190D EcoDyn		QSY 190F EcoDyn		QSY 190K EcoDyn	
Rated voltage U_N	427 V/420 V		421 V/412 V		408 V/404 V		399 V/396 V	
Rated power output P_N	7.2 kW/6.5 kW		9.6 kW/8.6 kW		9.9 kW/8.9 kW		12.2 kW/11.0 kW	
Rated speed n_N	3000 rpm (in EcoDyn mode)							
Rated torque $M_N^{1)}$	23.0 Nm/20.7 Nm		30.6 Nm/27.5 Nm		31.5 Nm/28.4 Nm		39.0 Nm/35.1 Nm	
Rated current $I_N^{1)}$	11.8 A/10.6 A		14.4 A/13.0 A		15.0 A/13.5 A		20.2 A/18.2 A	
Stall torque $M_0^{1)}$	28.0 Nm		38.0 Nm		47.6 Nm		62.5 Nm	
Stall current $I_0^{1)}$	14.0 A		18.1 A		22.7 A		29.8 A	
Max. speed n_{max}	3900 rpm (in EcoDyn mode)							
Max. torque $M_{max}^{2)}$	85 Nm		107 Nm		150 Nm		240 Nm	
Max. current $I_{max}^{2)}$	50.2 A		62.9 A		88.4 A		134.3 A	
Mass m	29.0 kg	37.0 kg	33.5 kg	41.5 kg	42.5 kg	50.5 kg	61 kg	69.0 kg
Rotor inertia J	106 kg·cm ²	115 kg·cm ²	133 kg·cm ²	142 kg·cm ²	190 kg·cm ²	199 kg·cm ²	290 kg·cm ²	299 kg·cm ²
Brake	Without	With	Without	With	Without	With	Without	With
Rated voltage U_{Br}	–	DC 24 V	–	DC 24 V	–	DC 24 V	–	DC 24 V
Rated current I_{Br}	–	1.38 A	–	1.38 A	–	1.38 A	–	1.38 A
Holding torque M_{Br}	–	70 Nm	–	70 Nm	–	70 Nm	–	70 Nm
ID								
Motor with ERN 1387	392023-1C	392023-1D	392024-1C	392024-1D	388244-1C	388244-1D	392025-1C	392025-1D
Motor with ECN 1313	392023-8C	392023-8D	392024-8C	392024-8D	388244-8C	388244-8D	392025-8C	392025-8D
Motor with EQN 1325	392023-6C	392023-6D	392024-6C	392024-6D	388244-6C	388244-6D	392025-6C	392025-6D

¹⁾ At 100 K ²⁾ Max. 200 ms
Italics: data for motors with ECN 1313 or EQN 1325 (rated torque reduced by 10 %)

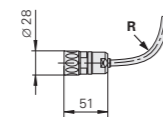
Rotatable connections



Power connector

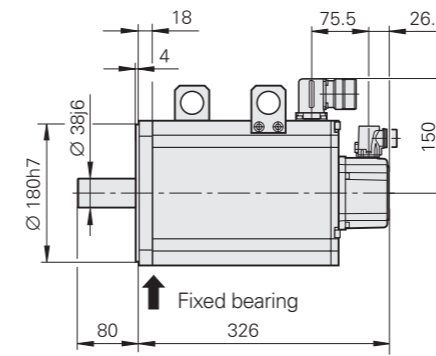


Encoder connector

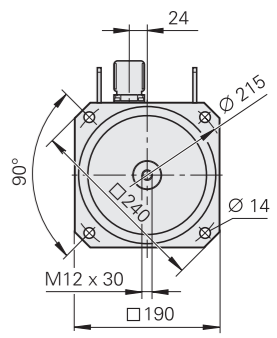
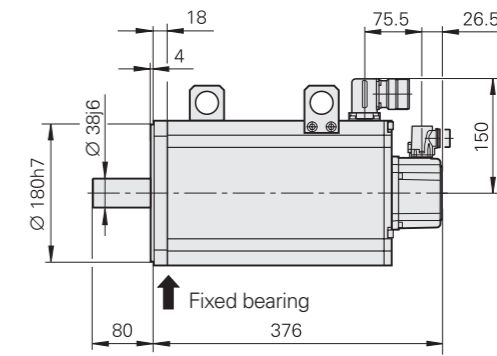


For **R** see page 25

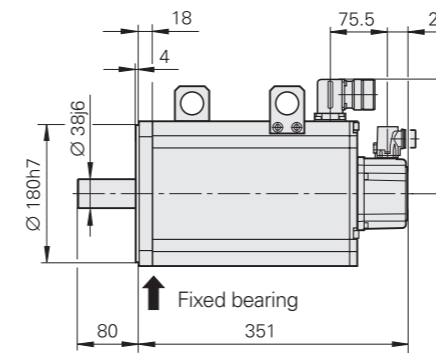
QSY 190C EcoDyn Without brake



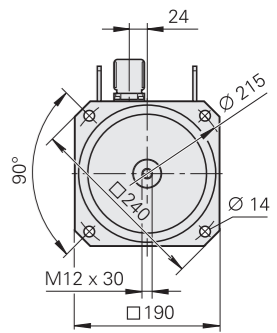
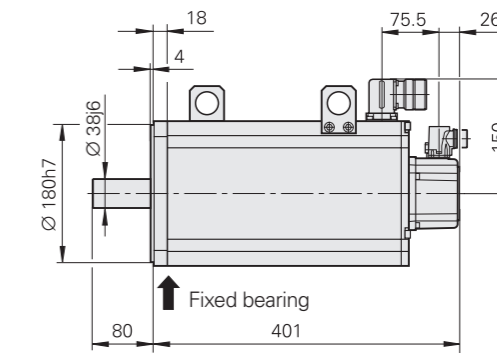
With brake



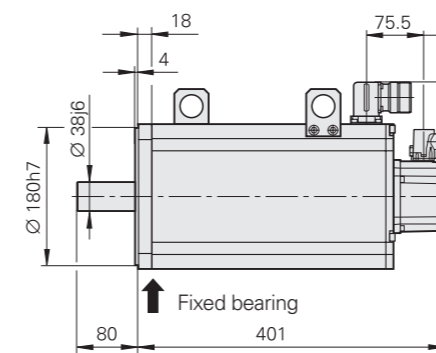
QSY 190D EcoDyn Without brake



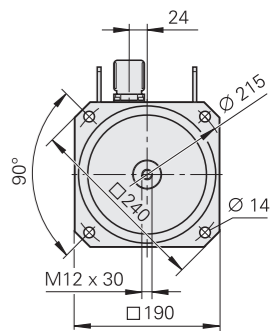
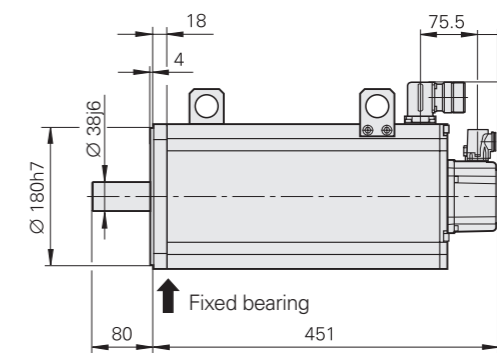
With brake



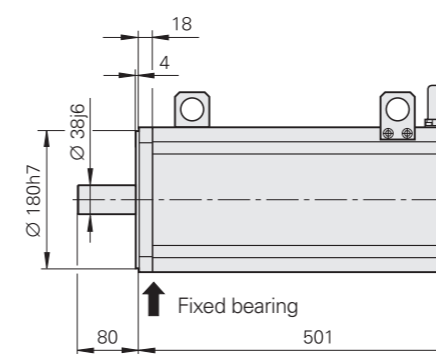
QSY 190F EcoDyn Without brake



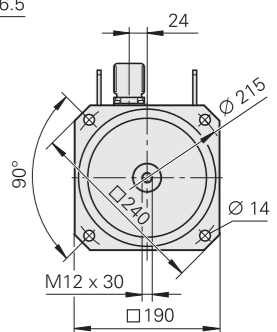
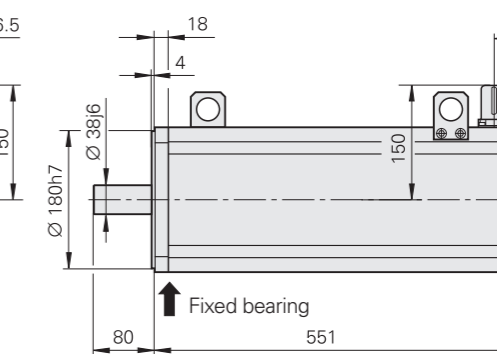
With brake



QSY 190K EcoDyn Without brake



With brake



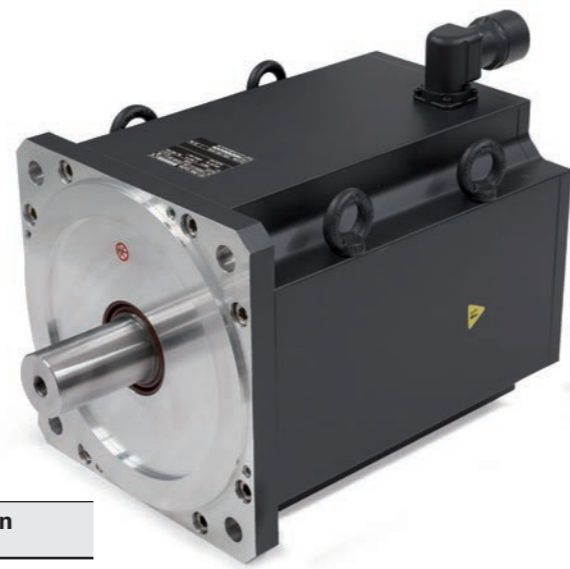
mm
 Tolerancing ISO 8015
 ISO 2768 - m H
 ≤ 6 mm: ±0.2 mm

Synchronous motors

QSY 260 EcoDyn series

Feed motors with four pole pairs

- Stall torque: 85 Nm to 120 Nm
- Choice of incremental or absolute rotary encoder

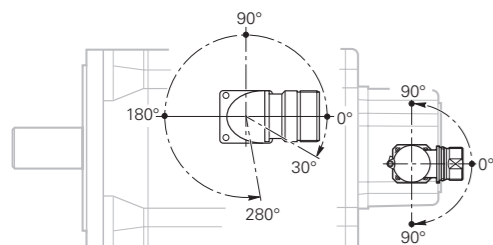


Motor	QSY 260B EcoDyn		QSY 260C EcoDyn	
Rated voltage U_N	352 V/350 V		376 V/373 V	
Rated power output P_N	12.0 kW/10.8 kW		16.0 kW/14.4 kW	
Rated speed n_N	2000 rpm (in EcoDyn mode)			
Rated torque $M_N^{1)}$	57.3 Nm/51.6 Nm		76.4 Nm/68.8 Nm	
Rated current $I_N^{1)}$	21.5 A/19.4 A		28 A/25.2 A	
Stall torque $M_0^{1)}$	85.0 Nm		120.0 Nm	
Stall current $I_0^{1)}$	31.0 A		43.5 A	
Max. speed n_{max}	3000 rpm (in EcoDyn mode)			
Max. torque $M_{max}^{2)}$	250 Nm		360 Nm	
Max. current $I_{max}^{2)}$	130.0 A		173.0 A	
Mass m	62.0 kg	75.0 kg	74.0 kg	87.0 kg
Rotor inertia J	357.0 kg·cm ²	368.0 kg·cm ²	538.0 kg·cm ²	557.0 kg·cm ²
Brake	Without	With	Without	With
Rated voltage U_{Br}	–	DC 24 V	–	DC 24 V
Rated current I_{Br}	–	2.05 A	–	2.05 A
Holding torque M_{Br}	–	110 Nm	–	125 Nm
ID				
Motor with ERN 1387	1110623-1C	1110623-1D	1100242-1C	1100242-1D
Motor with EQN 1325	1110623-6C	1110623-6D	1100242-6C	1100242-6D

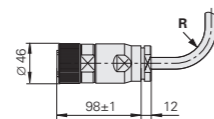
¹⁾ At 100 K ²⁾ Max. 200 ms

Italics: data for motors with EQN 1325 (rated torque reduced by 10 %)

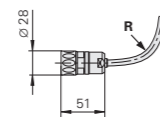
Rotatable connections



Power connector

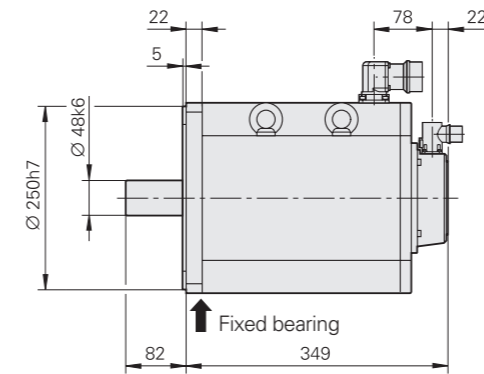


Encoder connector

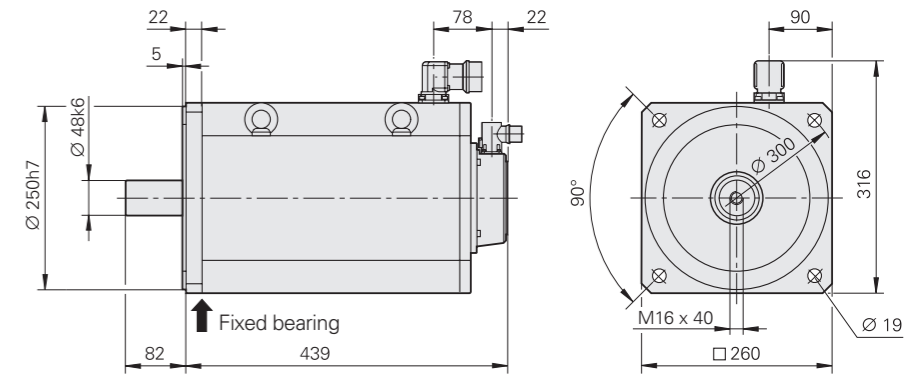


For **R** see page 25

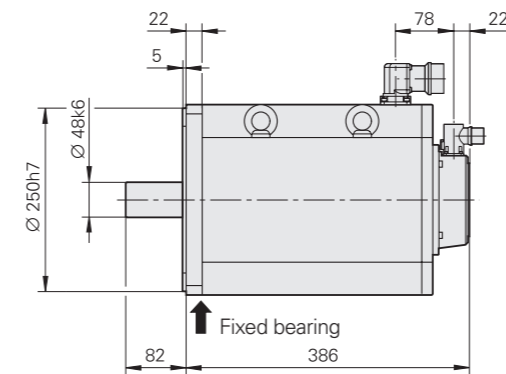
QSY 260B Without brake



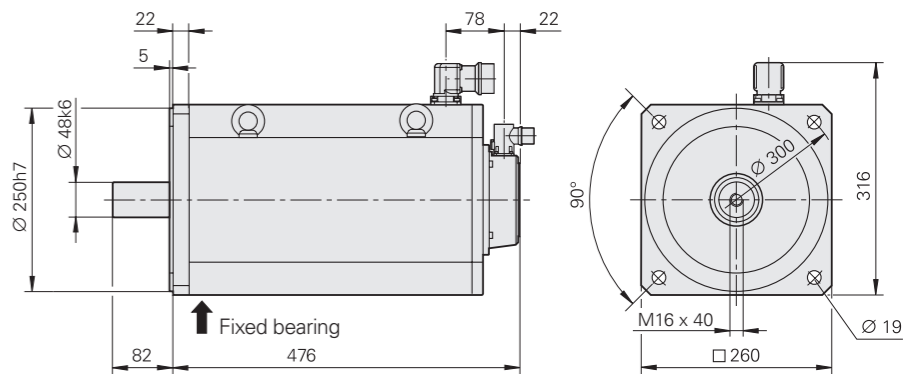
With brake



QSY 260C Without brake



With brake



mm

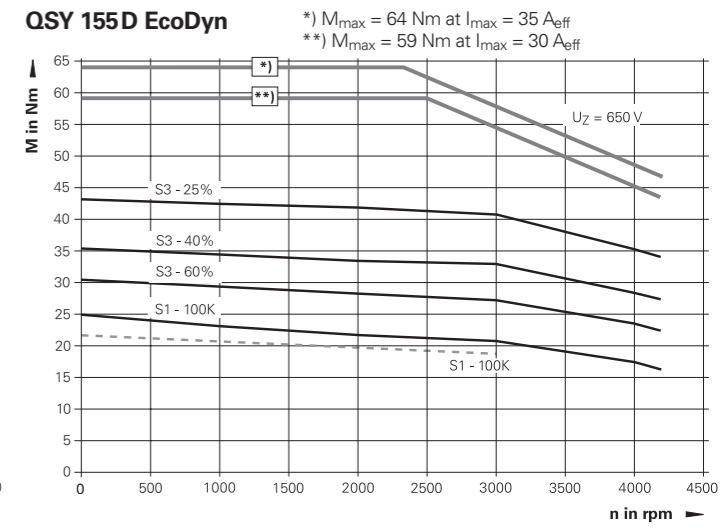
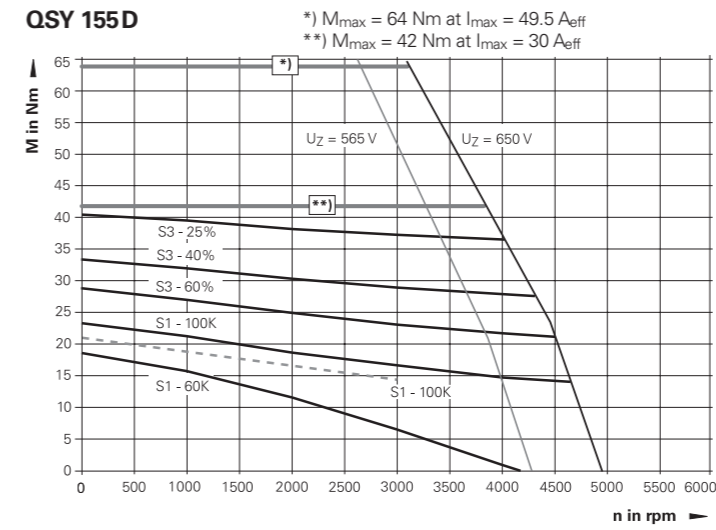
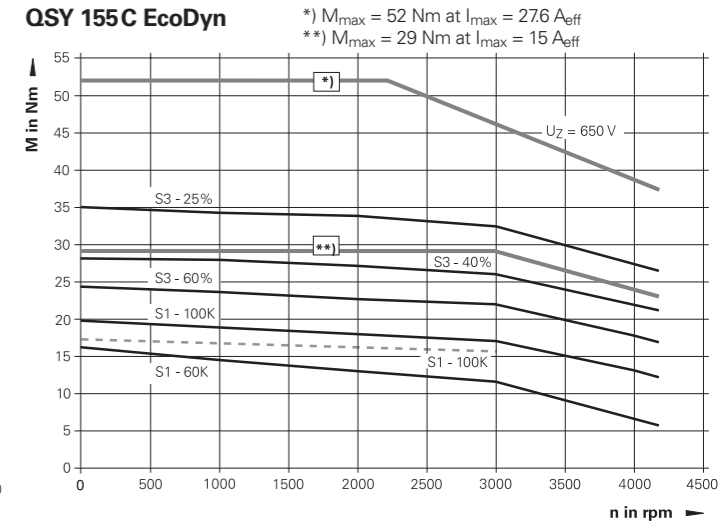
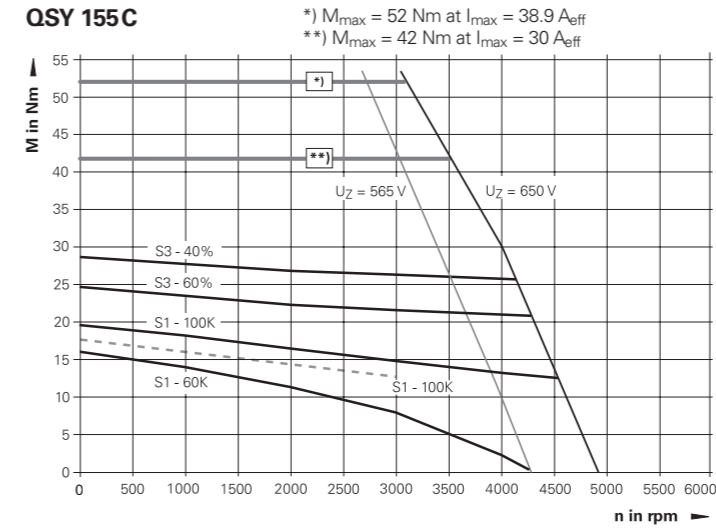
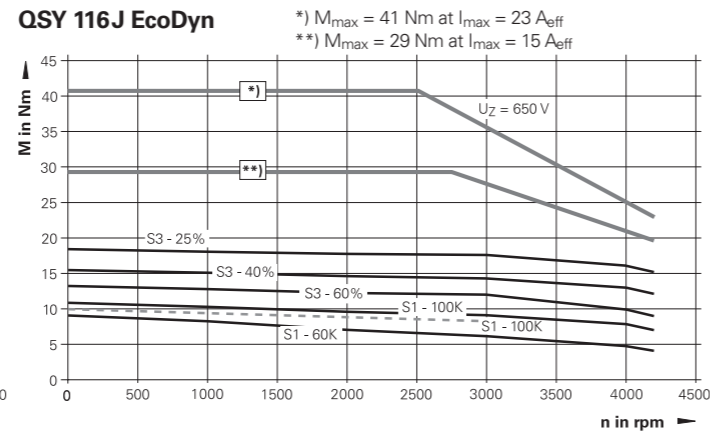
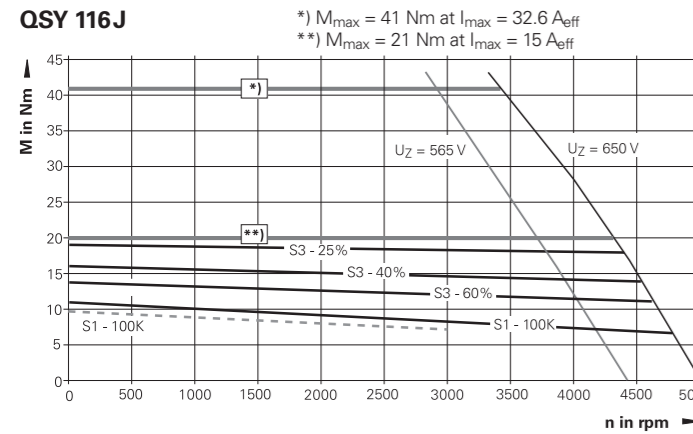
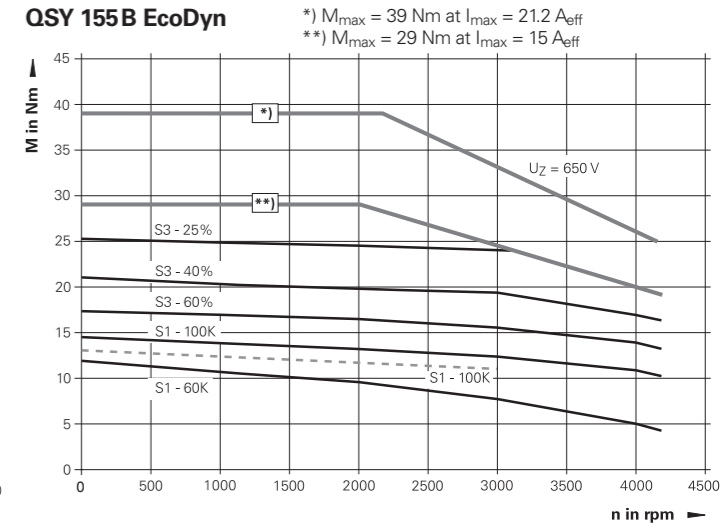
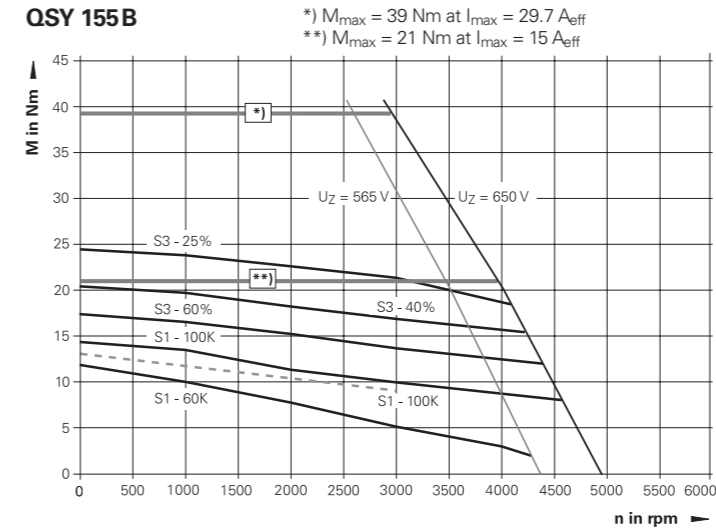
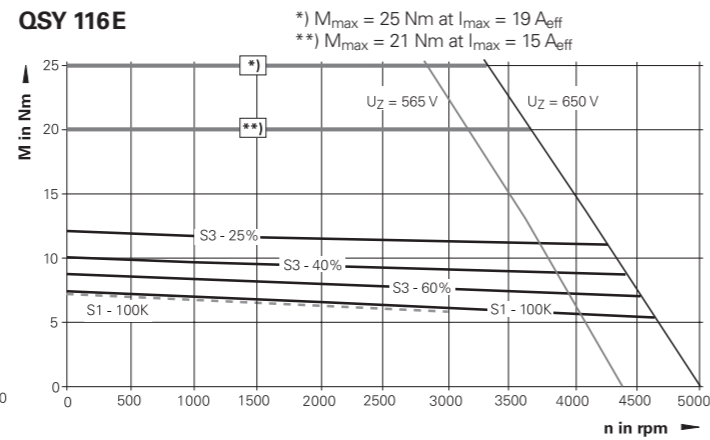
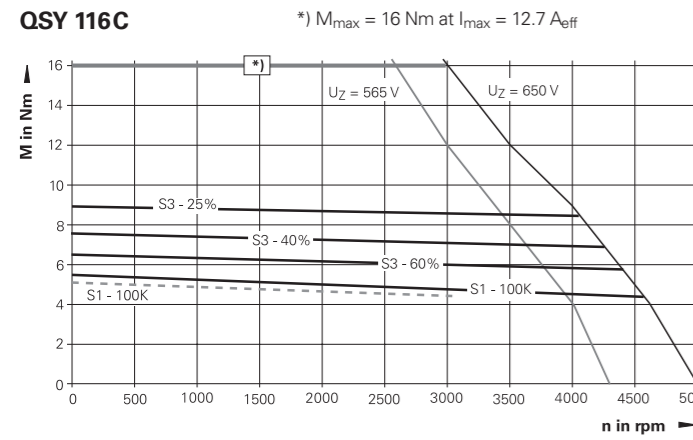
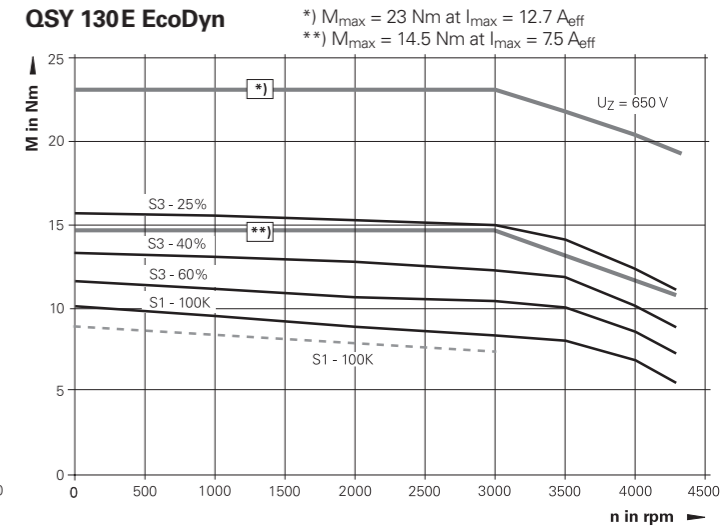
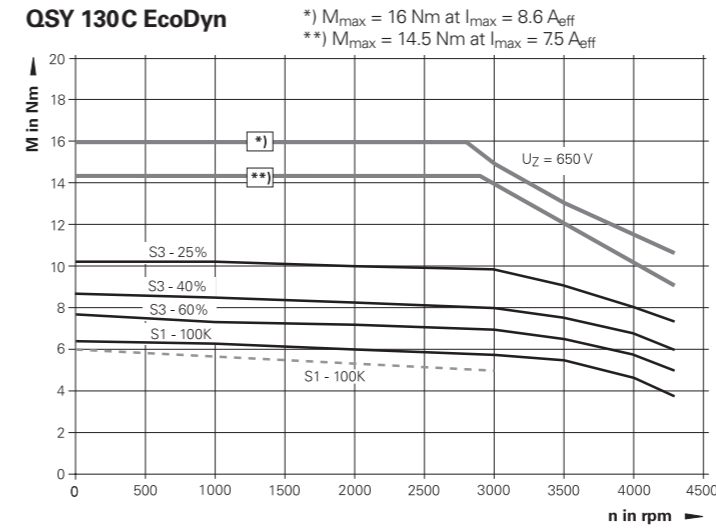
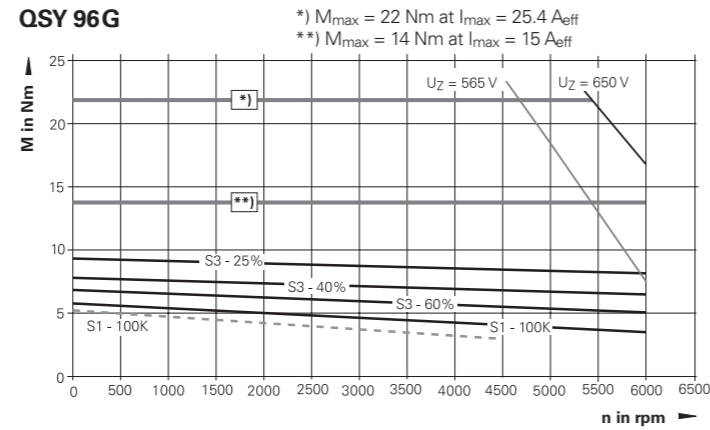
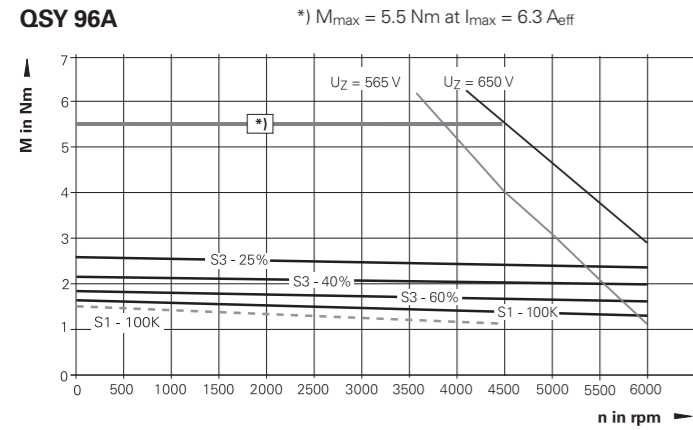
 Tolerancing ISO 8015
 ISO 2768 - m H
 ≤ 6 mm: ±0.2 mm

Synchronous motors

Torque characteristics

--- Characteristic curve according to the specifications
 — Measured characteristic curve of one motor

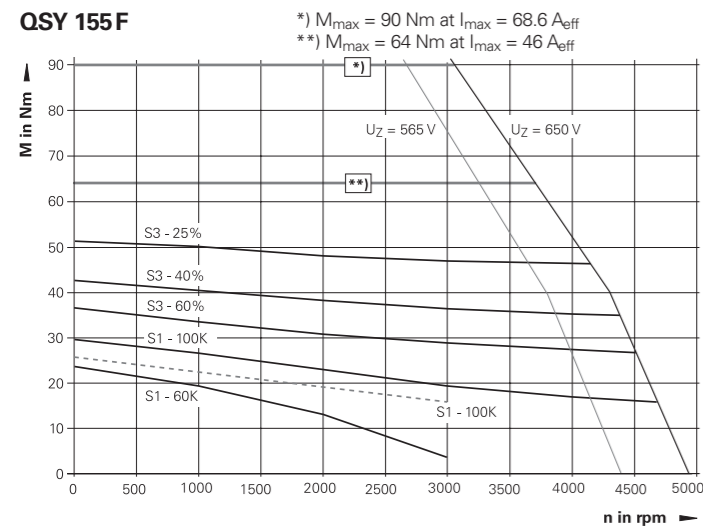
*) Characteristic curve at maximum motor current
 **) Characteristic curve with use of compact inverters



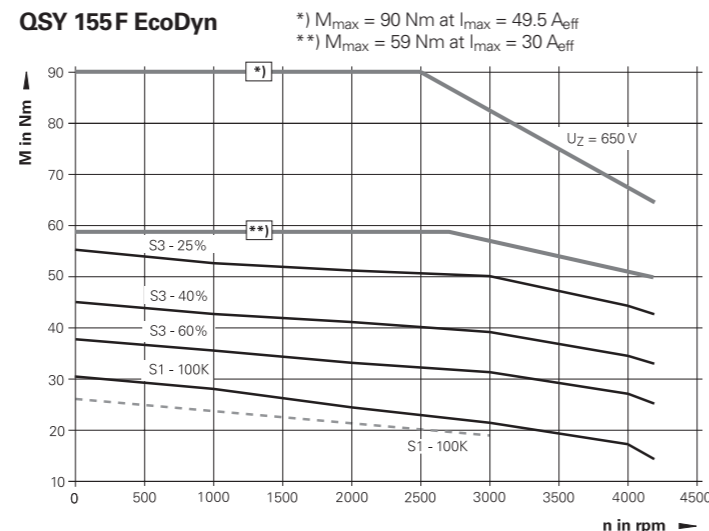
Notes

- The characteristic curves apply to motors with ERN 1387.
- **S3 mode**
 Cycle duration: 10 minutes
 During the rest period the motor must be stopped and disconnected from power.

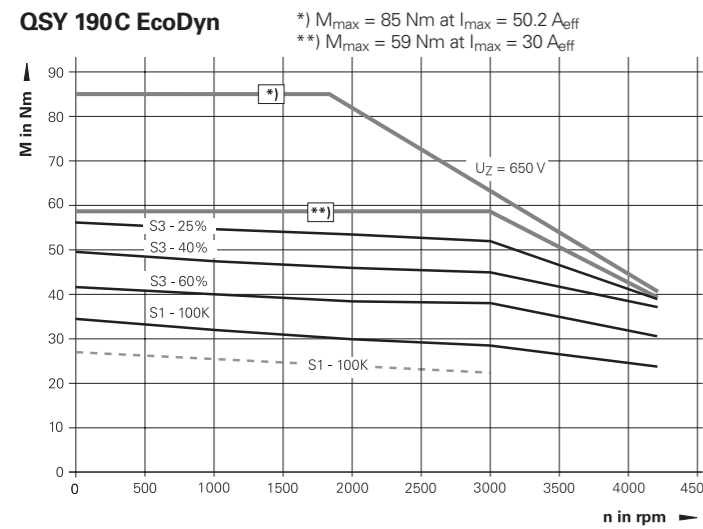
QSY 155F



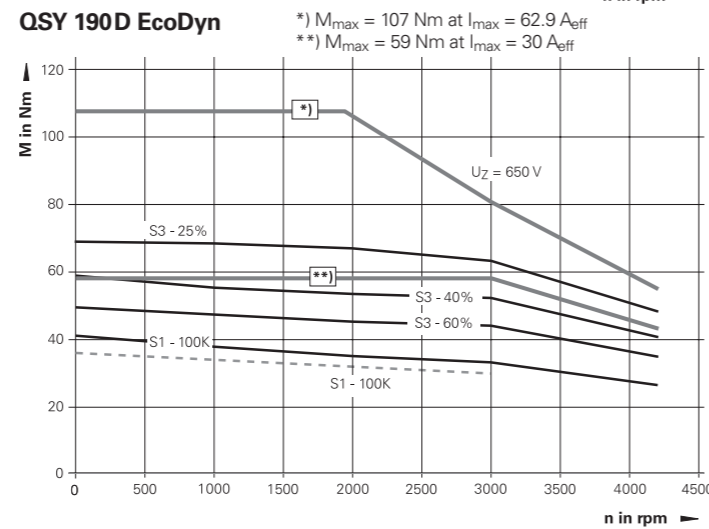
QSY 155F EcoDyn



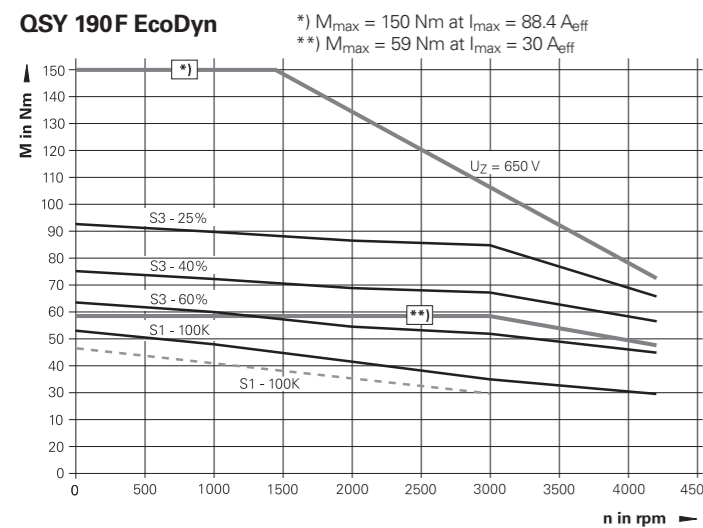
QSY 190C EcoDyn



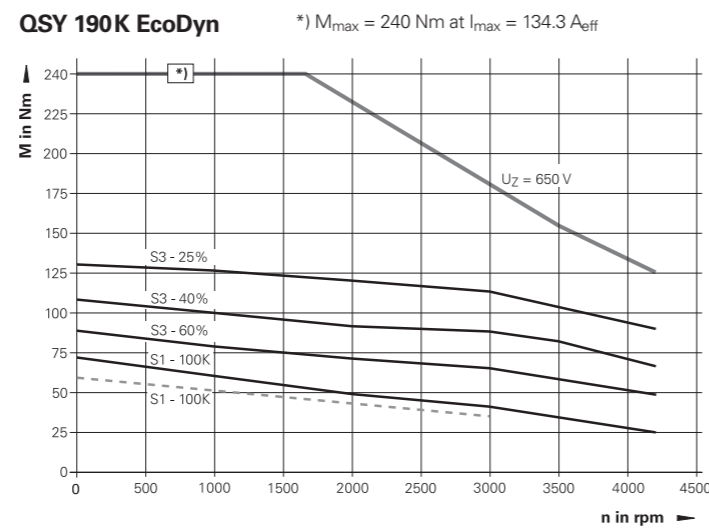
QSY 190D EcoDyn



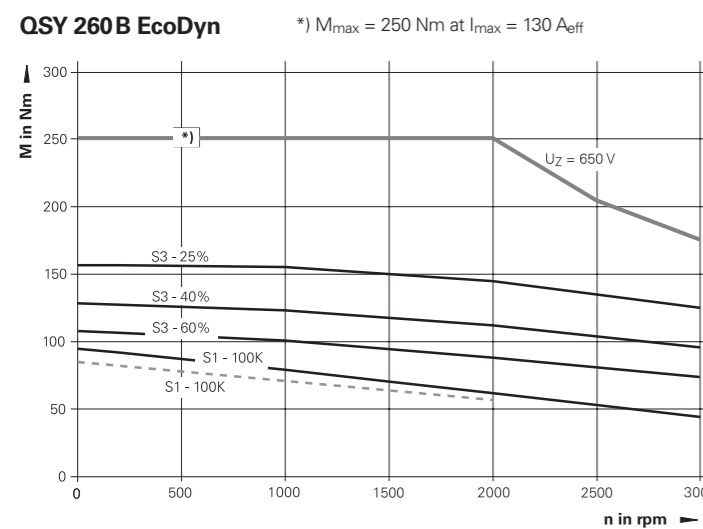
QSY 190F EcoDyn



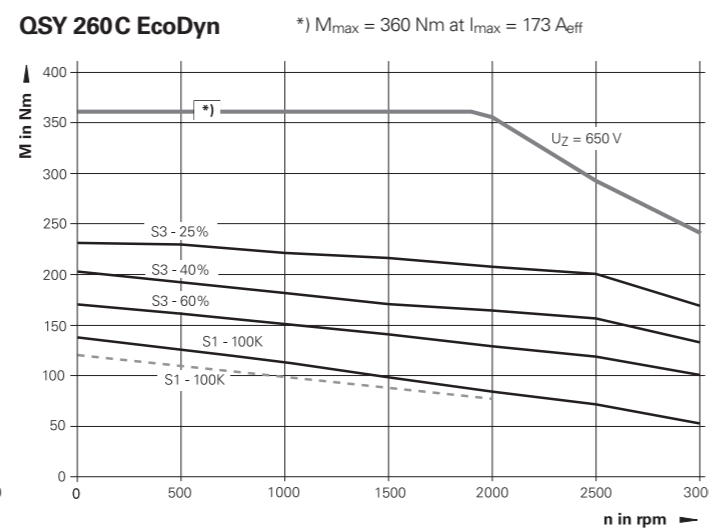
QSY 190K EcoDyn



QSY 260B EcoDyn



QSY 260C EcoDyn



Synchronous motors

Cables and connectors

Power cables

Current load at ambient temperature of up to 40 °C

	Cable with one connector ¹⁾ ID	Connector ID	Unassembled cable ²⁾ ID	Bend radius R for frequent flexing	Cable type	Diameter
Current load of up to 13.8 A						
QSY 96 QSY 116 QSY 130 QSY 155B EcoDyn QSY 155C EcoDyn QSY 155D EcoDyn	352960-xx <i>575796-xx</i>	325165-02	818792-xx <i>1214270-xx</i>	≥ 65 mm ≥ 105 mm	PUR [4 x 1.5 mm ² + (2 x 1.0 mm ²)]	13.0 mm <i>13.5 mm</i>
QSY 155B QSY 155C QSY 155F EcoDyn	352962-xx <i>690131-xx</i>	333090-02				
Current load of up to 26.0 A						
QSY 155D QSY 155F QSY 190C EcoDyn QSY 190D EcoDyn QSY 190F EcoDyn	352963-xx <i>575797-xx</i>	333090-02	818791-xx <i>1214271-xx</i>	≥ 74 mm ≥ 123 mm	PUR [4 x 4 mm ² + (2 x 1.0 mm ²)]	14.8 mm <i>15.8 mm</i>
Current load of up to 32.8 A						
QSY 190K EcoDyn QSY 260B EcoDyn	393570-xx <i>690141-xx</i>	333090-03	818790-xx <i>1214272-xx</i>	≥ 82 mm ≥ 132 mm	PUR [4 x 6 mm ² + (2 x 1.0 mm ²)]	16.4 mm <i>17.0 mm</i>
Current load of up to 45.8 A						
QSY 260C EcoDyn	1119325-xx <i>1214663-xx</i>	333090-03	1214269-xx <i>1213905-xx</i>	≥ 104 mm ≥ 177 mm	PUR [4 x 10 mm ² + (2 x 1.0 mm ²)] <i>PUR [4 x 10 mm² + (2 x 1.5 mm²)]</i>	20.8 mm <i>23.5 mm</i>

¹⁾ Toroidal cores need to be used for cable lengths greater than 15 m (see page 50)

²⁾ Available only in cable lengths of 100 m, 150 m, and 200 m

Italics: shielded power cable

Encoder cables

	Cable length ¹⁾	Cable complete with connectors ID	Line drop compensator ID	Extension cable ID	Bend radius R for frequent flexing
QSY with ECN 1313 or EQN 1325	< 60 m	336376-xx	–	340302-xx (as needed)	≥ 100 mm
QSY synchronous motor with ERN 1387	< 30 m	289440-xx	–	336847-xx (as needed)	≥ 100 mm
	30 m to 60 m	289440-xx	370226-01	336847-xx	

¹⁾ Max. total cable length: 60 m

Asynchronous motors

QAN overview

General technical information

Specifications

The specifications and characteristic curves apply to motors mounted without thermal insulation. The maximum permissible temperature divergence from the maximum permissible ambient temperature or coolant temperature of 40 °C is 105 K. If the motor is mounted so that it is thermally insulated, the motor torque must be reduced in order to avoid thermal overloading.

When used in conjunction with Gen 3 drives, motors must be operated only with a DC-link voltage of 650 V.

Shaft bearing

HEIDENHAIN asynchronous motors feature maintenance-free bearings. The shaft bearing on **solid-shaft motors** can be selected as either a standard bearing or a spindle bearing. The version with a spindle bearing can withstand greater radial forces and permits higher spindle speeds. Motors with a spindle bearing exhibit a slightly larger overall length.

The **hollow-shaft motors** are generally equipped with a spindle bearing.

Shaft end

HEIDENHAIN QAN asynchronous motors have a cylindrical shaft end according to DIN EN 50347 and IEC 60072-1. The solid-shaft motors have a centering hole in accordance with DIN 332-DS.

The QAN asynchronous solid-shaft motors can be selected in two shaft versions:

- **Plain shaft end:**
This version without a keyway is the standard shaft for all asynchronous motors with a spindle bearing.
- **Shaft end with a keyway:**
Asynchronous motors with a keyway are **half-key balanced** and come with a key as per DIN 6885-1:
QAN 200: AS 10 x 8 x 70
QAN 260: AS 12 x 8 x 90
QAN 320: AS 16 x 10 x 90
The version with a keyway is the standard shaft for all asynchronous motors with a standard bearing.
- **Shaft end with a double keyway:**
QAN 360 UHW: AS 12 x 8 x 96 (2x)

Mechanical service life

The service life of the bearings depends on the shaft load and the average shaft speed. For QAN motors, the rated bearing service life is 10 000 hours, which is motor-specific and applies to a certain maximum shaft load at an average speed.

Speed measurement

The shaft speed is measured by an integrated HEIDENHAIN rotary encoder:

- ERN 1381 with 1024 lines, for solid-shaft motors
- ERM 2480 with 600 lines, for motors with hollow shaft

Please note:

Until mid-2014, the asynchronous motors delivered with a keyway were **full-key balanced**. The current motors are **half-key balanced**. These motors are uniquely identified by their ID number, which always ends in -xH (e.g., 374328-0H)

Precision balancing

QAN asynchronous motors from HEIDENHAIN can still be balanced at a later time.

Hollow-shaft motors

The QAN 200 UH, QAN 260 xH, and QAN 360 UHW hollow-shaft motors are suitable for direct mounting on mechanical spindles. Their hollow shaft permits the conveyance of coolant to internally cooled tools.

The coolant is fed in at the rear of the motor through a rotating union (e.g., from the company Deublin, order no.: 1109-020-188). The shaft end is designed for this.

Installation elevation

HEIDENHAIN motors may be installed up to an elevation of 1000 m above sea level. For installation elevations above 1000 m, additional cooling measures are required.

Functional safety

None of the current QAN motor variants described in this brochure feature fault exclusion for the loosening of the mechanical connection between the encoder and the motor.

Safety-related parameters for the motors or the encoders used within them are available upon request (e.g., MTTF values, data for fault exclusion).

Thermal parameters

Cooling method:

QAN 200-320: air-cooled
(internal fan)

QAN 360 UHW: water-cooled

Temperature monitoring with KTY 84-130 thermistor in the stator winding

Thermal class F

Mechanical parameters

QAN 200-320 design:
IM B35 (flange/base mounting) as per EN 60034-7

QAN 360 UHW design:
IM B5, IM V1

Mounting the motor

The following screws are recommended for mounting the motor:

Mounting type:	Flange	Base
QAN 200	M12	M10
QAN 260	M16	M10
QAN 320	M16	M12
QAN 360 UHW	M10	–

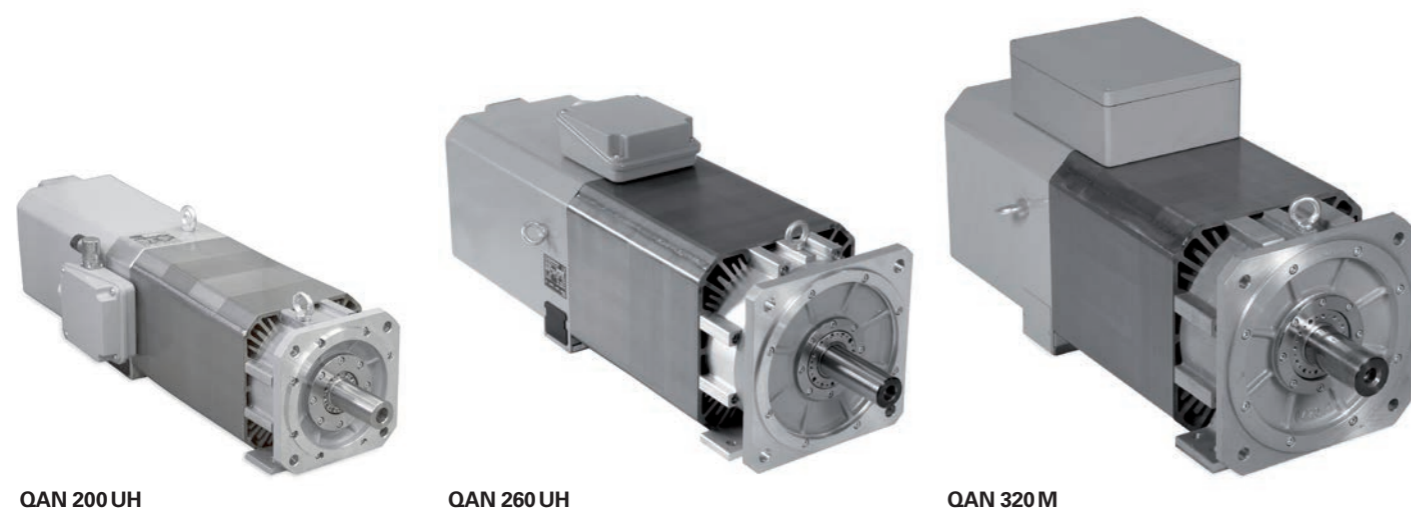
Flange: dimensions as per DIN EN 50347 and IEC 60072-1

Protection as per DIN EN 60529

- Motor: IP54 (QAN 200-320)
IP43 (QAN 360 UHW)
- Shaft end: IP43

Vibration severity

Grade SR (external precision balancing possible)
(IEC 60034-14)



Asynchronous motors Used with 1xx inverter systems

Asynchronous motors with solid shaft	Rated power	Rated speed	Max. speed		Rated torque	Rated current	Recommended inverters ³⁾			Page
			Standard bearing	Spindle bearing			1-axis module	2-axis module	Compact inverter	
QAN 200M	5.5 kW	1500 rpm	9000 rpm	12 000 rpm	35.0 Nm	18.0 A	UM 112 D	UM 122 D	Spindle output	30
QAN 200L	7.5 kW	1500 rpm	9000 rpm	12 000 rpm	47.8 Nm	20.1 A	UM 112 D	UM 122 D	Spindle output	
QAN 200U	10.0 kW	1500 rpm	9000 rpm	12 000 rpm	63.7 Nm	25.0 A	UM 112 D	UM 122 D	Spindle output ¹⁾	
QAN 260M	15.0 kW	1500 rpm	8000 rpm	10 000 rpm	95.5 Nm	35.0 A	UM 113 D	–	Spindle output ²⁾	32
QAN 260L	20.0 kW	1500 rpm	8000 rpm	10 000 rpm	127.3 Nm	46.0 A	UM 113 D	–	–	
QAN 260U	24.0 kW	1500 rpm	8000 rpm	10 000 rpm	152.8 Nm	58.0 A	UM 114 D	–	–	
QAN 320M	32.0 kW	1500 rpm	8000 rpm	10 000 rpm	203.7 Nm	77.5 A	UM 114 D	–	–	34
QAN 320L	40.0 kW	1500 rpm	8000 rpm	10 000 rpm	254.6 Nm	99.0 A	UM 115 D	–	–	

Asynchronous motors with hollow shaft	Rated power	Rated speed	Max. speed		Rated torque	Rated current	Recommended inverters ³⁾			Page
			Standard bearing	Spindle bearing			1-axis module	2-axis module	Compact inverter	
QAN 200UH	10.0 kW	1500 rpm	–	12 000 rpm 15 000 rpm	63.7 Nm	25.0 A	UM 112 D	UM 122 D	Spindle output ¹⁾	36
QAN 260MH	15.0 kW	1500 rpm	–	12 000 rpm	96.0 Nm	35.0 A	UM 113 D	–	Spindle output ²⁾	38
QAN 260LH	20.0 kW	1500 rpm	–	12 000 rpm	128.0 Nm	46.0 A	UM 113 D	–	–	
QAN 260UH	22.0 kW	1500 rpm	–	10 000 rpm 12 000 rpm	140.0 Nm	54.0 A	UM 113 D ¹⁾ UM 114 D	–	–	
QAN 360UHW	43.2 kW	Wye connection: 450 rpm Delta connection: 780 rpm	–	7000 rpm	Wye connection: 917 Nm Delta connection: 529 Nm	Wye connection: 113 A Delta connection: 124 A	UM 115 D	–	–	40

¹⁾ Only UE 24xB, UR 24x

²⁾ Only UR 24x

³⁾ The maximum acceleration of the motor might not be achievable with the recommended inverters. If necessary, a more powerful power module must be selected.

Used with Gen 3 drives

Asynchronous motors with solid shaft	Rated power	Rated speed	Max. speed		Rated torque	Rated current	Recommended inverters ¹⁾					Page
			Standard bearing	Spindle bearing			1-axis module	2-axis module	Compact inverters/axis			
									UEC 31x	UEC 32x	UEC 33x	
QAN 200M	5.5 kW	1500 rpm	9000 rpm	12 000 rpm	35.0 Nm	18.0 A	UM 311	UM 321	1 to 2	1 to 2	1 to 5	30
QAN 200L	7.5 kW	1500 rpm	9000 rpm	12 000 rpm	47.8 Nm	20.1 A	UM 311	UM 321	1 to 2	1 to 2	1 to 5	
QAN 200U	10.0 kW	1500 rpm	9000 rpm	12 000 rpm	63.7 Nm	25.0 A	UM 312	UM 322	–	1 to 2	1 to 2	
QAN 260M	15.0 kW	1500 rpm	8000 rpm	10 000 rpm	95.5 Nm	35.0 A	UM 312	UM 322	–	–	1 to 2	32
QAN 260L	20.0 kW	1500 rpm	8000 rpm	10 000 rpm	127.3 Nm	46.0 A	UM 313	–	–	–	1	
QAN 260U	24.0 kW	1500 rpm	8000 rpm	10 000 rpm	152.8 Nm	58.0 A	UM 313	–	–	–	–	
QAN 320M	32.0 kW	1500 rpm	8000 rpm	10 000 rpm	203.7 Nm	77.5 A	UM 314	–	–	–	–	34
QAN 320L	40.0 kW	1500 rpm	8000 rpm	10 000 rpm	254.6 Nm	99.0 A	UM 315	–	–	–	–	

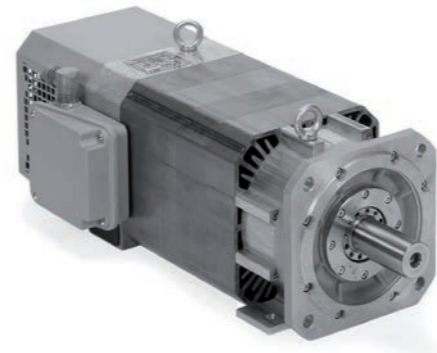
Asynchronous motors with hollow shaft	Rated power	Rated speed	Max. speed		Rated torque	Rated current	Recommended inverters ¹⁾		Page
			Standard bearing	Spindle bearing			1-axis module	2-axis module	
QAN 200UH	10.0 kW	1500 rpm	–	12 000 rpm 15 000 rpm	63.7 Nm	25.0 A	UM 312	UM 322	36
QAN 260MH	15.0 kW	1500 rpm	–	12 000 rpm	96.0 Nm	35.0 A	UM 312	UM 322	38
QAN 260LH	20.0 kW	1500 rpm	–	12 000 rpm	128.0 Nm	46.0 A	UM 313	–	
QAN 260UH	22.0 kW	1500 rpm	–	10 000 rpm 12 000 rpm	140.0 Nm	54.0 A	UM 313 UM 313	–	
QAN 360UHW	43.2 kW	Wye connection: 450 rpm Delta connection: 780 rpm	–	7000 rpm	Wye connection: 917 Nm Delta connection: 529 Nm	Wye connection: 113 A Delta connection: 124 A	UM 315	–	40

¹⁾ The maximum acceleration of the motor might not be achievable with the recommended inverters. If necessary, a more powerful power module must be selected.

Asynchronous motors with solid shaft

QAN 200 series

- Spindle motors with two pole pairs
- Rated power output: 5.5 kW to 10 kW
- Choice of standard or spindle bearing

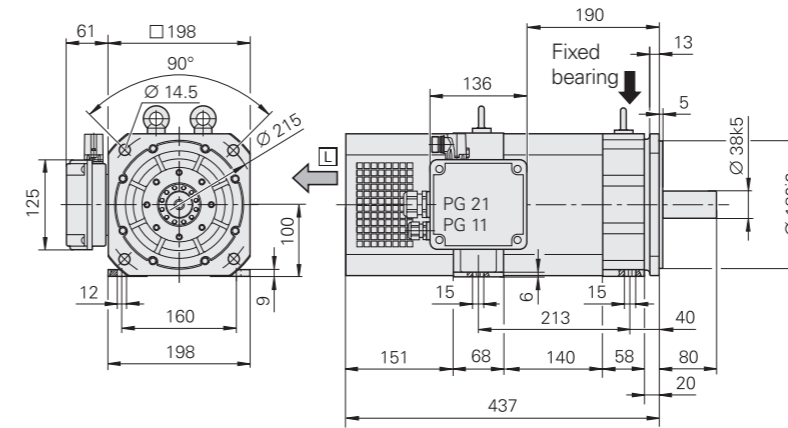


Motor	QAN 200M	QAN 200L	QAN 200U			
Rated voltage U_N	250 V	305 V	330 V			
Rated power output P_N	5.5 kW	7.5 kW	10.0 kW			
Rated speed n_N	1500 rpm					
Rated torque M_N (105 K)	35.0 Nm	47.8 Nm	63.7 Nm			
Rated current I_N (105 K)	18.0 A	20.1 A	25.0 A			
Efficiency	0.85					
Max. speed n_{max} ¹⁾						
Standard bearing	9000 rpm	9000 rpm	9000 rpm			
Spindle bearing	12000 rpm	12000 rpm	12000 rpm			
Max. current I_{max}	33 A	36 A	44 A			
Mass m	51 kg	68 kg	83 kg			
Rotor inertia J	245 kg·cm ²	353 kg·cm ²	405 kg·cm ²			
Protection	IP54					
Fan	3AC 400 V					
Rated voltage U_L	0.17 A/0.2 A					
Rated current I_L	50 Hz/60 Hz					
Frequency f_L						
ID	Plain shaft	With keyway	Plain shaft	With keyway	Plain shaft	With keyway
Motor with standard bearing	374328-03	374328-0H	374329-03	374329-0H	374330-03	374330-0H
Motor with spindle bearing	374328-13	374328-1H	374329-13	374329-1H	374330-13	374330-1H

¹⁾ The maximum shaft speed depends on the application conditions of the motor, such as the shaft load (see the *Motors Technical Manual*)

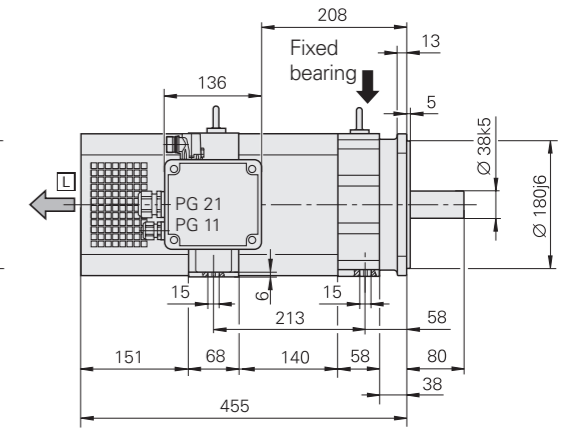
Bold: standard version

QAN 200M

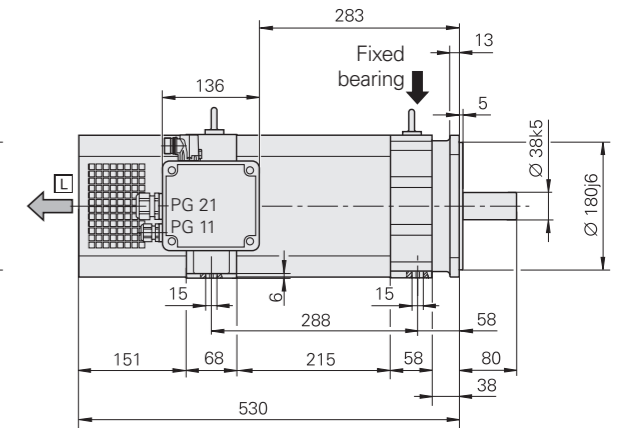
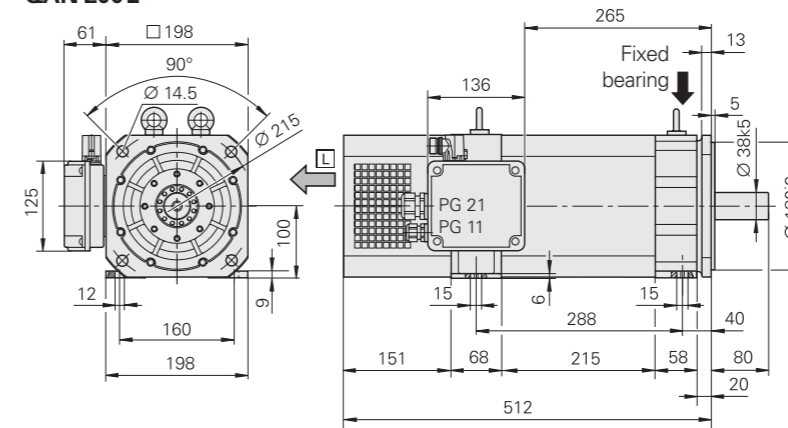


With standard bearing

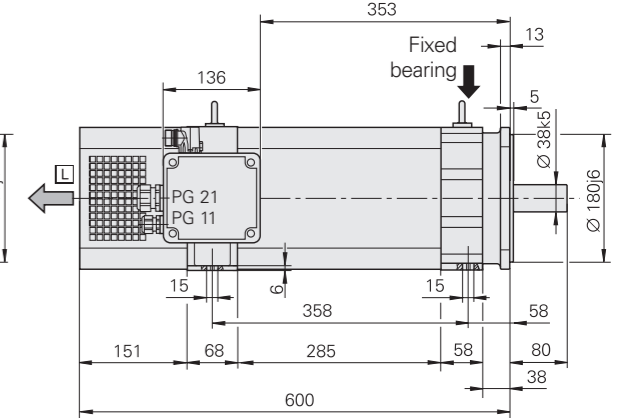
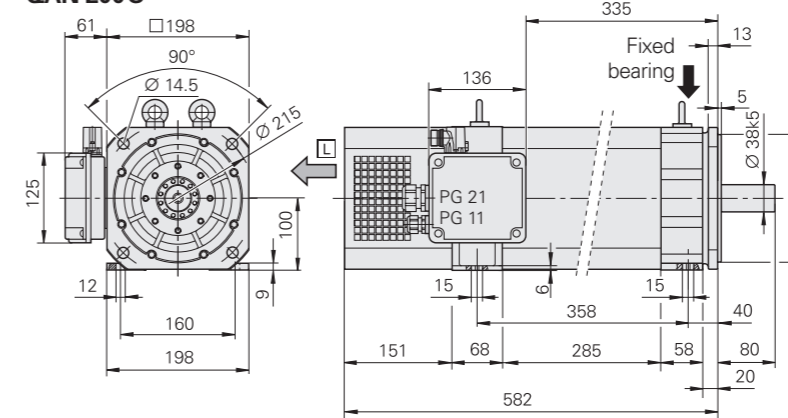
With spindle bearing



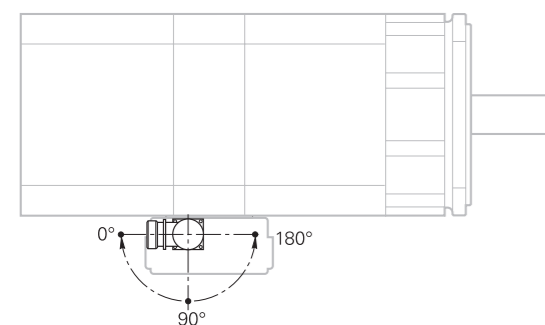
QAN 200L



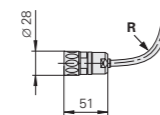
QAN 200U



Rotatable connections



Encoder connector



For **R** see page 48

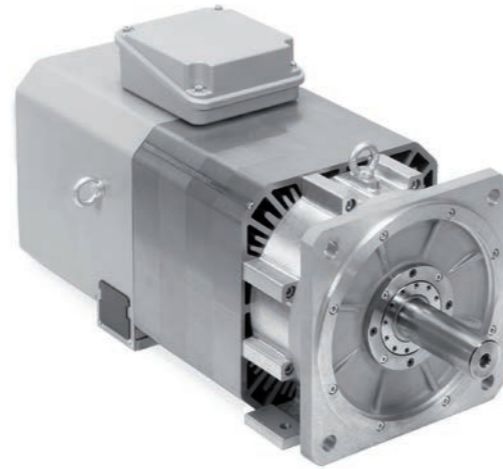
□ = Air flow
PG 11: 5 mm to 10 mm
PG 21: 13 mm to 18 mm

mm
Tolerancing ISO 8015
ISO 2768 - m H
≤ 6 mm: ±0.2 mm

Asynchronous motors with solid shaft

QAN 260 series

- Spindle motors with two pole pairs
- Rated power output: 12 kW to 24 kW
- Choice of standard or spindle bearing

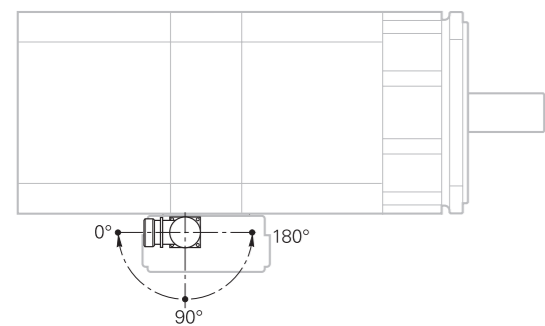


Motor	QAN 260M	QAN 260L	QAN 260U			
Rated voltage U_N	348 V	331 V	318 V			
Rated power output P_N	15 kW	20 kW	24 kW			
Rated speed n_N	1500 rpm					
Rated torque M_N (105 K)	96.0 Nm	128.0 Nm	153.0 Nm			
Rated current I_N (105 K)	35.0 A	46.0 A	58.0 A			
Efficiency	0.85					
Max. speed n_{max} ¹⁾ Standard bearing Spindle bearing*	8000 rpm 10000 rpm or 12000 rpm	8000 rpm 10000 rpm				
Max. current I_{max}	70 A	96 A	116 A			
Mass m	112 kg	135 kg	158 kg			
Rotor inertia J	700 kg·cm ²	920 kg·cm ²	1100 kg·cm ²			
Protection	IP54					
Fan Rated voltage U_L Rated current I_L Frequency f_L	3AC 400 V 0.22 A/0.26 A 50 Hz/60 Hz					
ID	Solid shaft	With keyway	Solid shaft	With keyway	Solid shaft	With keyway
Motor with standard bearing	510019-63	510019-4H	510020-43	510020-4H	510021-43	510021-4H
Motor with spindle bearing	510019-53 510019-73	510019-5H —	510020-53 510020-73	510020-5H —	510021-53 —	510021-5H —

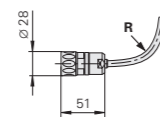
¹⁾ The maximum shaft speed depends on the application conditions of the motor, such as the shaft load (see the *Motors Technical Manual*)

* Please select when ordering
Bold: standard version

Rotatable connections

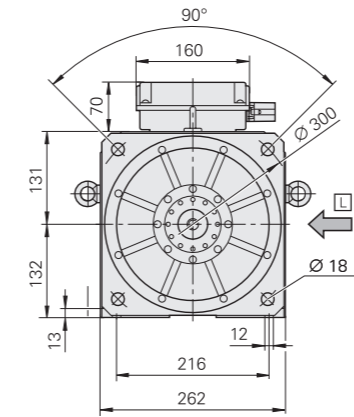


Encoder connector

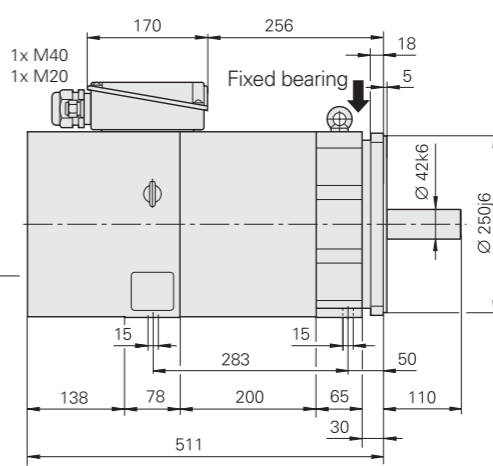


For **R** see page 48

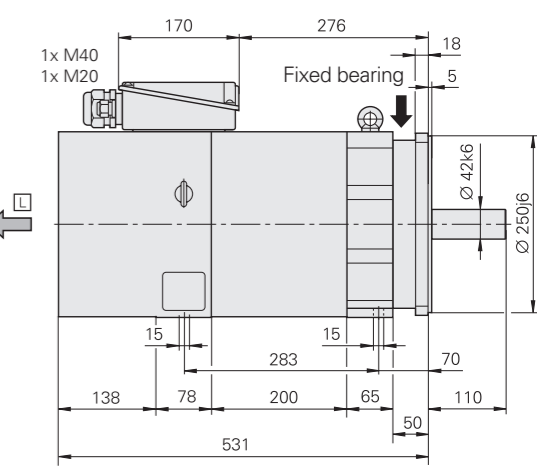
QAN 260M



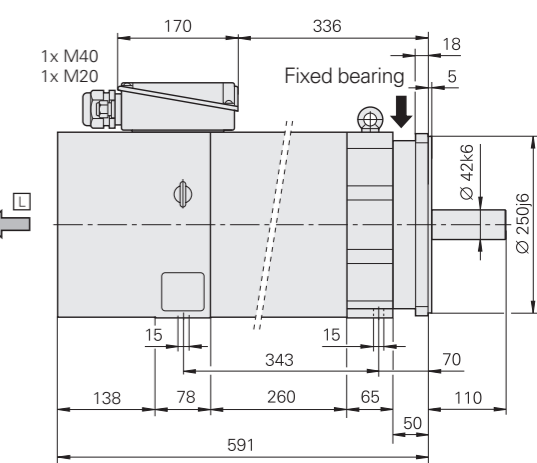
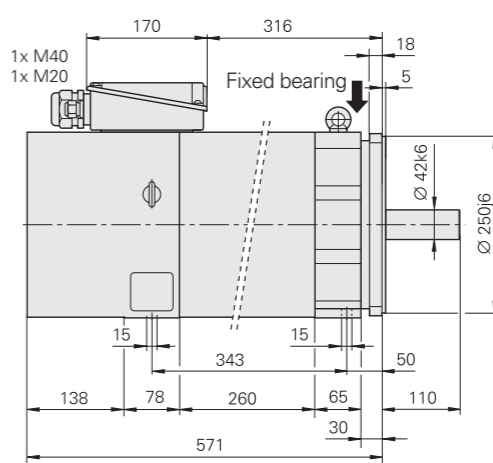
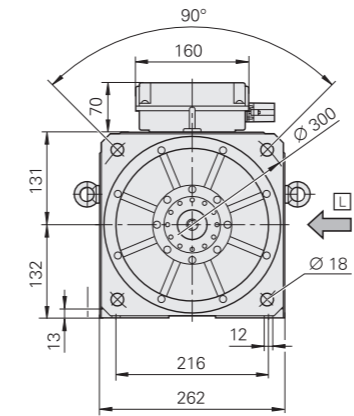
With standard bearing



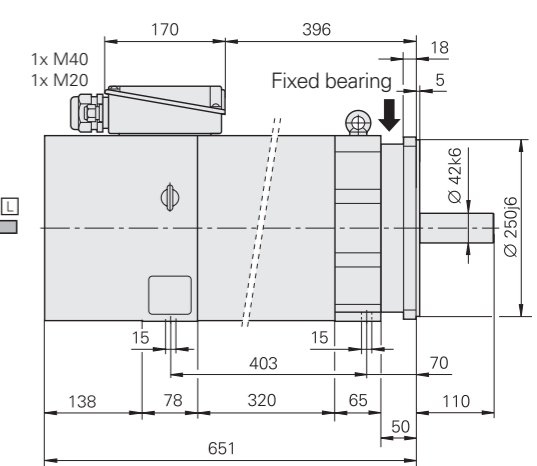
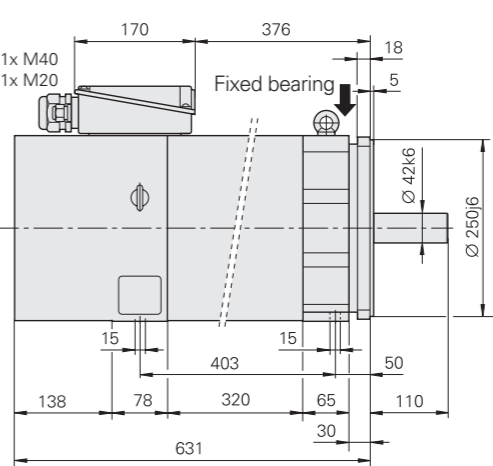
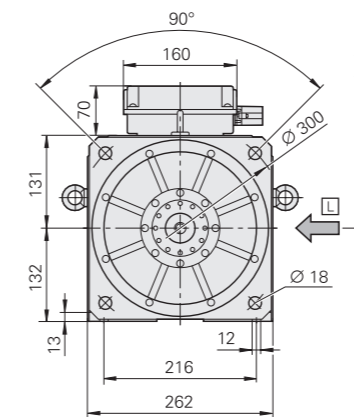
With spindle bearing



QAN 260L



QAN 260U



□ = Air flow

QAN 260M

M20: 6 mm to 12 mm
M40: 20 mm to 26 mm

QAN 260 L/U

M20: 6 mm to 12 mm
M40: 22 mm to 32 mm

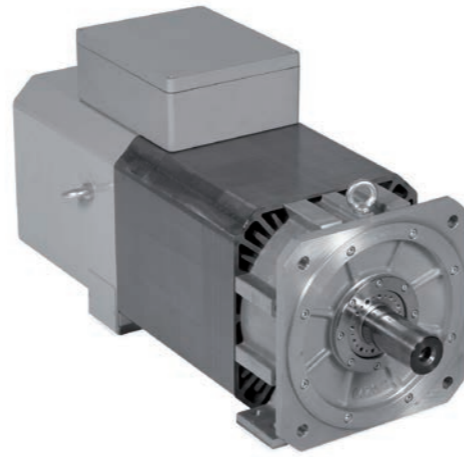


mm
Tolerancing ISO 8015
ISO 2768 - m H
≤ 6 mm: ±0.2 mm

Asynchronous motors with solid shaft

QAN 320 series

Spindle motors with two pole pairs
 • Rated power output: 18 kW to 40 kW

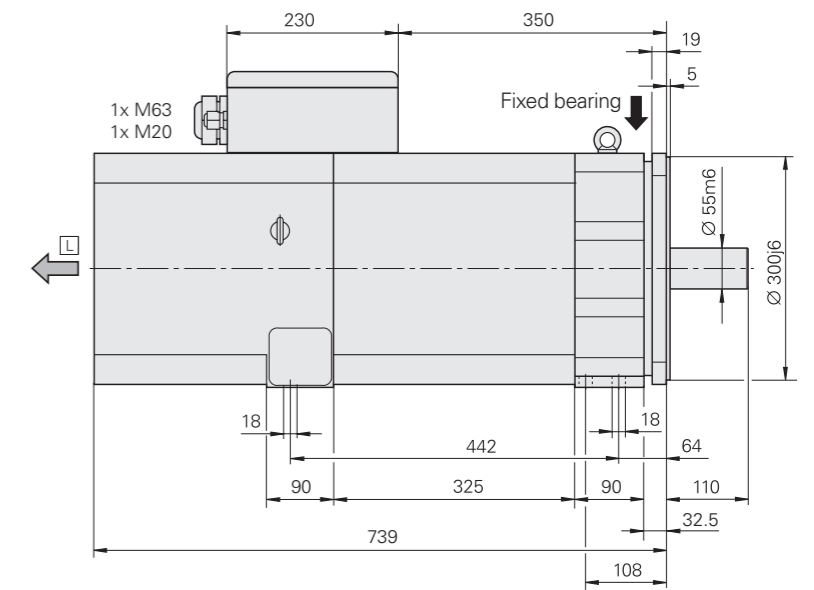
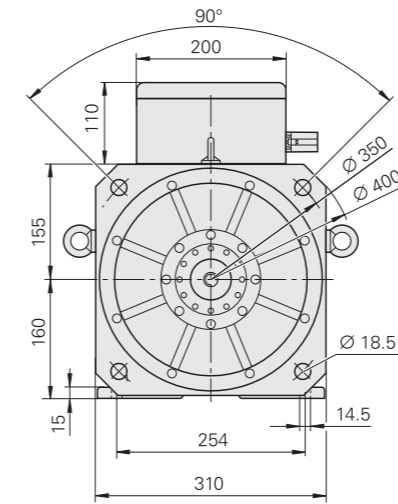


Motor	QAN 320M		QAN 320L	
Rated voltage U_N	317 V		315 V	
Rated power output P_N	32 kW		40 kW	
Rated speed n_N	1500 rpm		1500 rpm	
Rated torque M_N (105 K)	203.7 Nm		254.6 Nm	
Rated current I_N (105 K)	77.5 A		99.0 A	
Efficiency	0.85		0.91	
Max. speed n_{max} ¹⁾ Standard bearing Spindle bearing	8000 rpm 10000 rpm			
Max. current I_{max}	155 A		186 A	
Mass m	240 kg		280 kg	
Rotor inertia J	1870 kg·cm ²		2300 kg·cm ²	
Fan Rated voltage U_L Rated current I_L Frequency f_L	3AC 400 V 0.33 A/0.43 A 50 Hz/60 Hz			
ID Motor with standard bearing Motor with spindle bearing	Plain shaft 513302-43 513302-53	With keyway 513302-4H 513302-5H	Plain shaft 577484-43 577484-53	With keyway 577484-4H 577484-5H

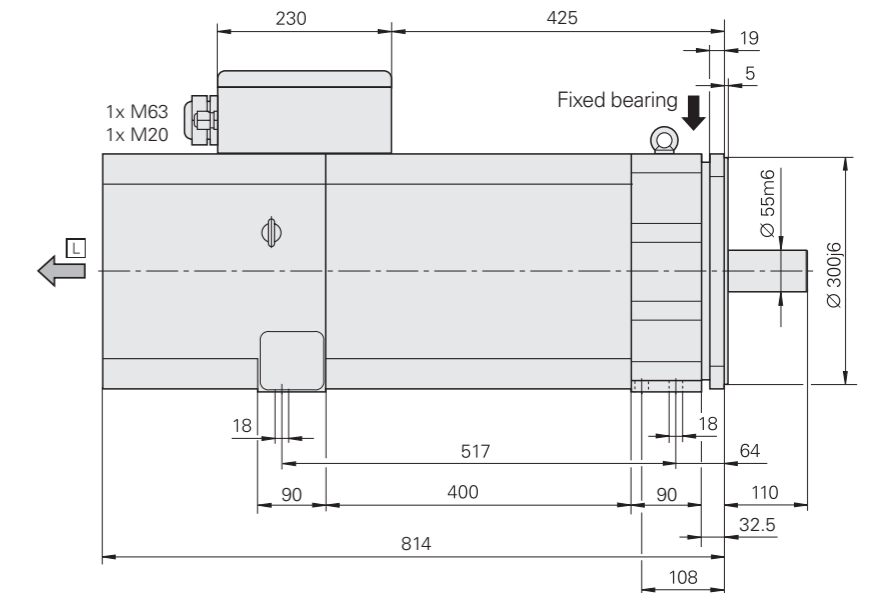
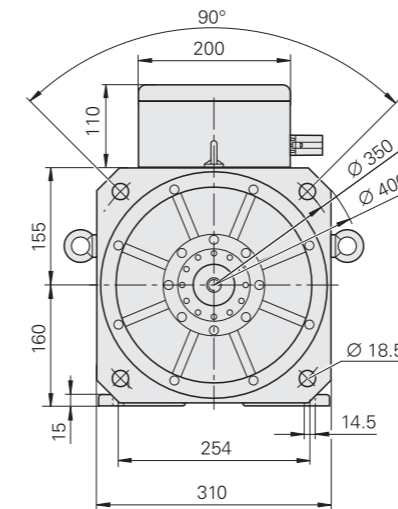
¹⁾ The maximum shaft speed depends on the application conditions of the motor, such as the shaft load (see the *Motors* Technical Manual)

Bold: standard version

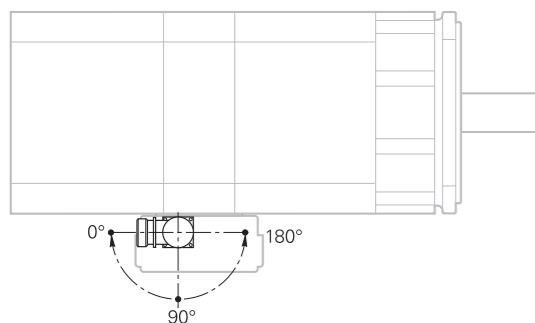
QAN 320M



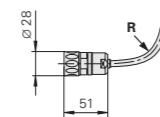
QAN 320L



Rotatable connections



Encoder connector



For **R** see page 48

□ = Air flow
 M20: 6 mm to 12 mm
 M63: 34 mm to 45 mm

mm

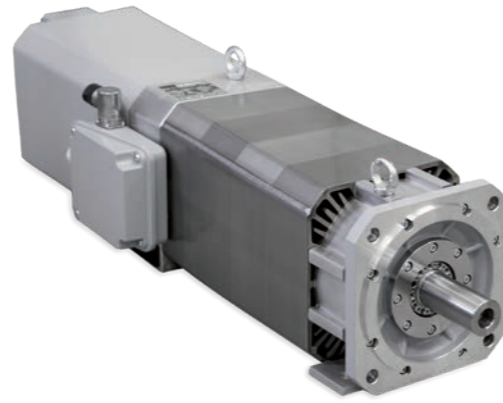
 Tolerancing ISO 8015
 ISO 2768 - m H
 ≤ 6 mm: ±0.2 mm

Asynchronous motors with hollow shaft

QAN 200UH

Hollow-shaft spindle motor with two pole pairs

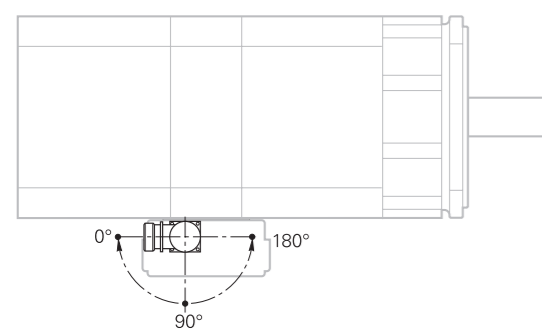
- Rated power output: up to 10 kW
- With spindle bearing



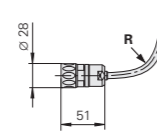
Motor	QAN 200UH	
Rated voltage U_N	330 V	
Rated power output P_N	10.0 kW	
Rated speed n_N	1500 rpm	
Rated torque M_N (105 K)	63.7 Nm	
Rated current I_N (105 K)	25.0 A	
Efficiency	0.85	
Max. speed n_{max} ¹⁾ Spindle bearing	12 000 rpm	15 000 rpm
Max. current I_{max}	44 A	
Hollow shaft bore	Ø 9 mm	
Mass m	91 kg	
Rotor inertia J	405 kg·cm ²	
Protection	IP54	
Fan Rated voltage U_L Rated current I_L Frequency f_L	3AC 400 V 0.17 A/0.2 A 50 Hz/60 Hz	
ID Motor with spindle bearing	536257-18	536257-58

¹⁾The maximum shaft speed depends on the application conditions of the motor, such as the shaft load (see the *Motors Technical Manual*)

Rotatable connections

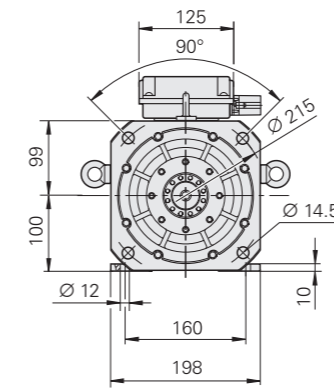


Encoder connector

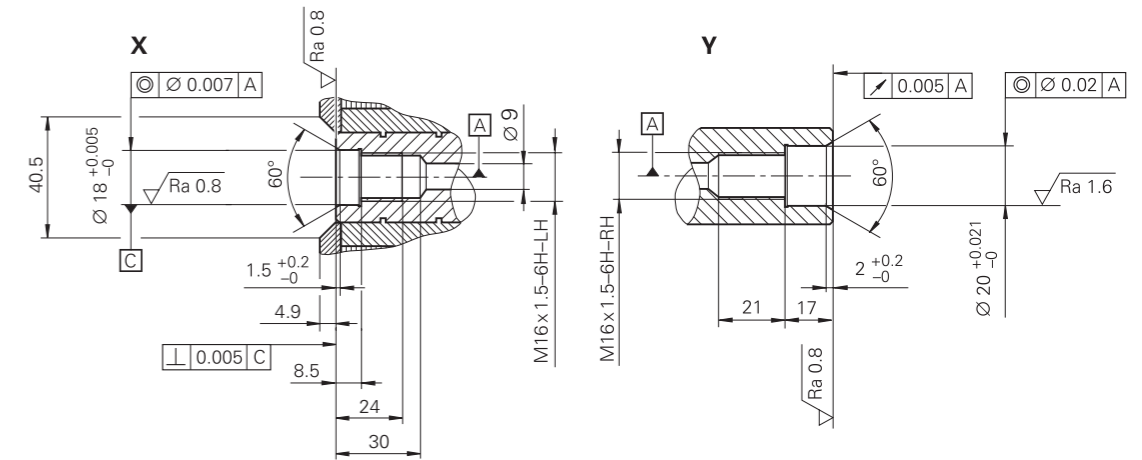
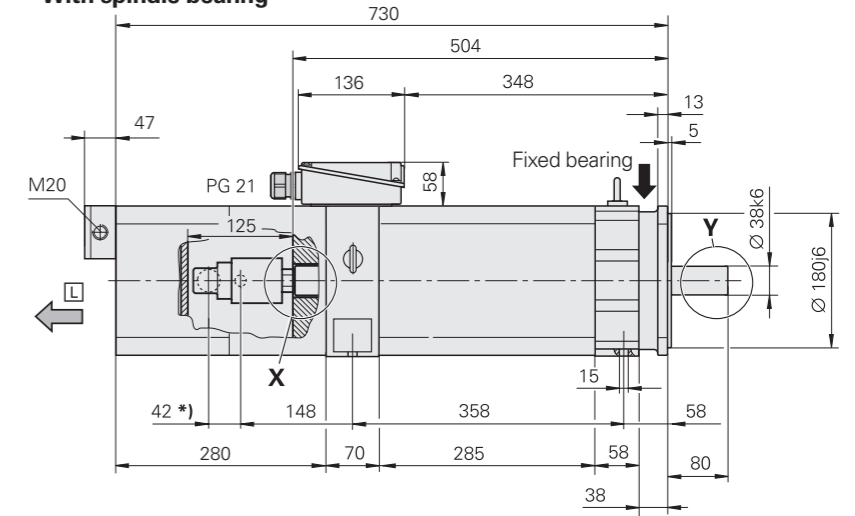


For **R** see page 48

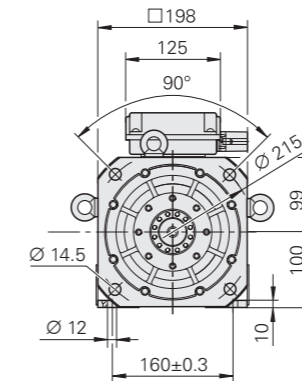
QAN 200UH 12 000 rpm



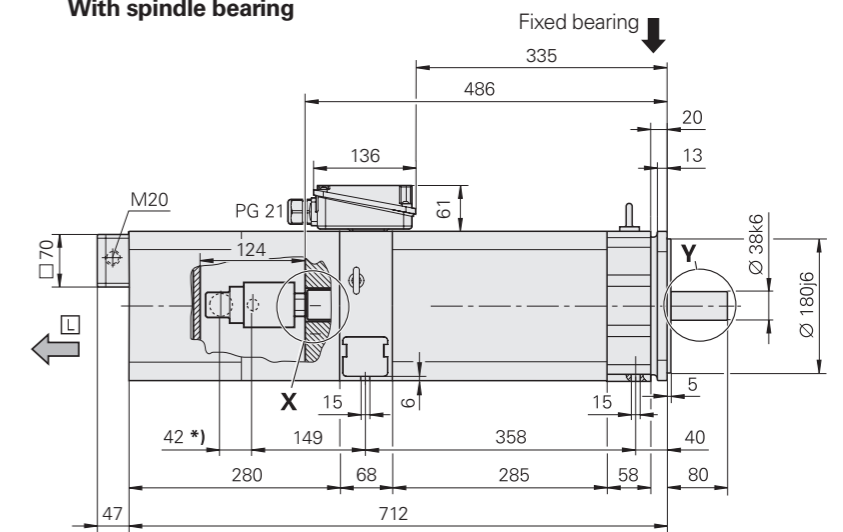
With spindle bearing



QAN 200UH 15 000 rpm



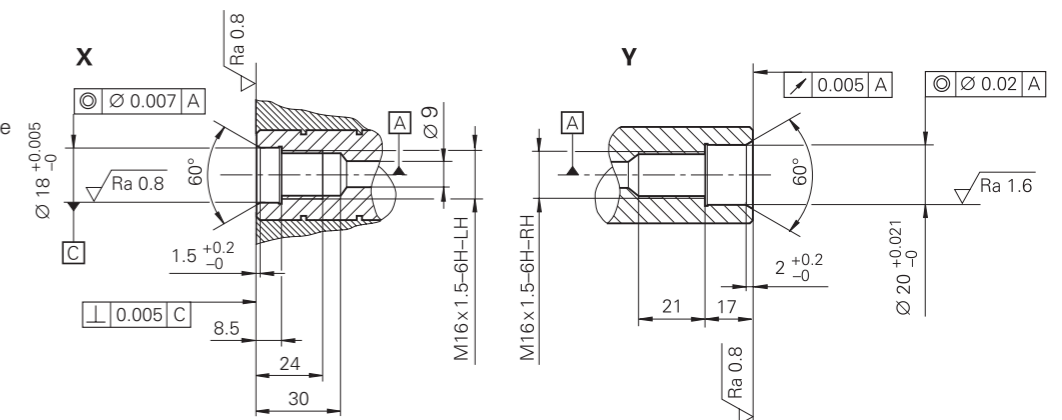
With spindle bearing



□ = Air flow
PG 21: 13 mm to 18 mm
M20: 6 mm to 12 mm

*) = Coolant connection on the right side
(e.g., from Deublin 1109-020-188)

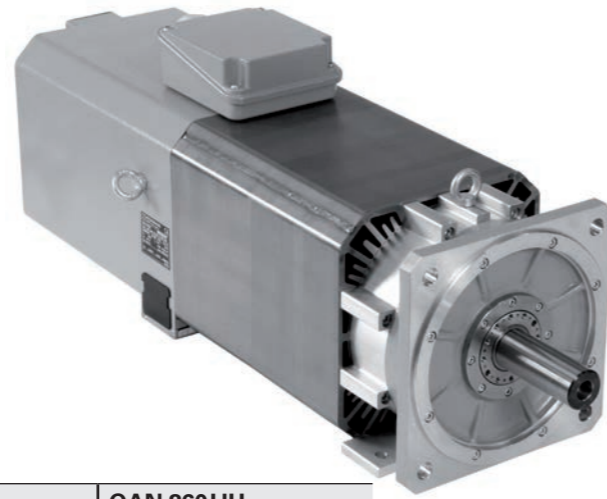
mm
Tolerancing ISO 8015
ISO 2768 - m H
≤ 6 mm: ±0.2 mm



Asynchronous motors with hollow shaft

QAN 260xH series

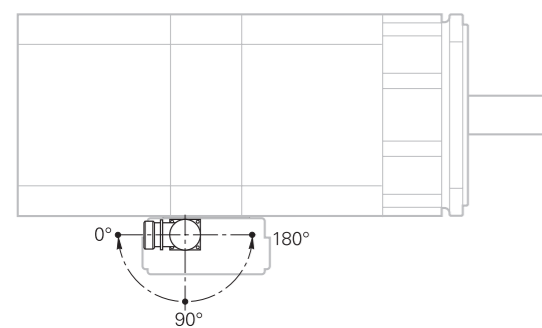
- Hollow-shaft spindle motor with two pole pairs**
- Rated power output: 15 kW to 22 kW
 - With spindle bearing



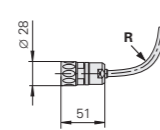
Motor	QAN 260MH	QAN 260LH	QAN 260UH
Rated voltage U_N	348 V	331 V	318 V
Rated power output P_N	15 kW	20 kW	22 kW
Rated speed n_N	1500 rpm		
Rated torque M_N (105 K)	96.0 Nm	128.0 Nm	140.0 Nm
Rated current I_N (105 K)	35.0 A	46.0 A	54.0 A
Efficiency	0.85		
Max. speed n_{max} ¹⁾ Spindle bearing*	12 000 rpm		10 000 rpm or 12 000 rpm
Max. current I_{max}	70 A	96 A	116 A
Mass m	120 kg	143 kg	158 kg
Rotor inertia J	700 kg·cm ²	920 kg·cm ²	1100 kg·cm ²
Protection	IP54		
Fan Rated voltage U_L Rated current I_L Frequency f_L	3AC 400 V 0.22 A/0.26 A 50 Hz/60 Hz		
ID Motor with spindle bearing			
10 000 rpm	–	–	536259-53
12 000 rpm	642855-73	631449-73	536259-73

¹⁾ The maximum shaft speed depends on the application conditions of the motor, such as the shaft load (see the *Motors Technical Manual*)
* Please select when ordering

Rotatable connections

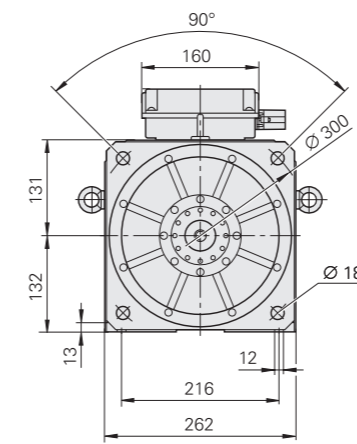


Encoder connector

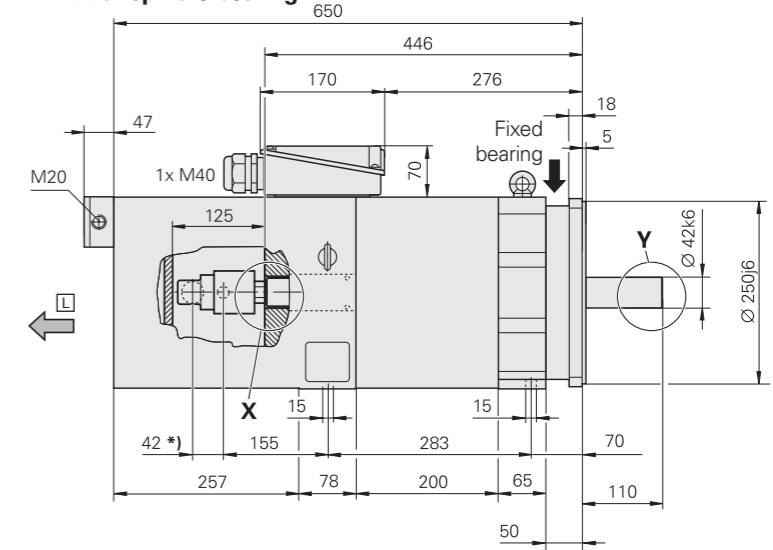


For **R** see page 48

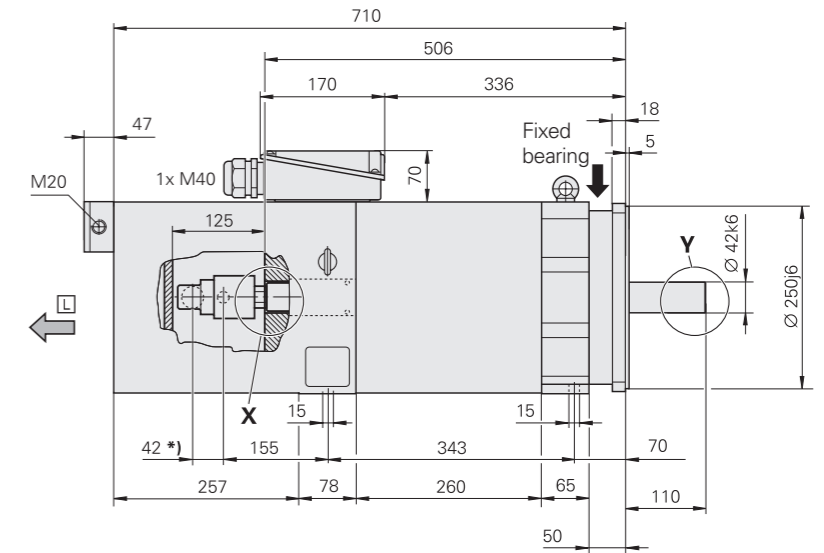
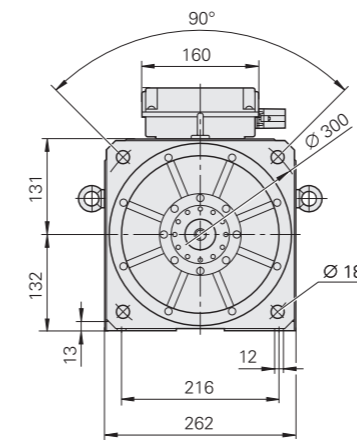
QAN 260MH



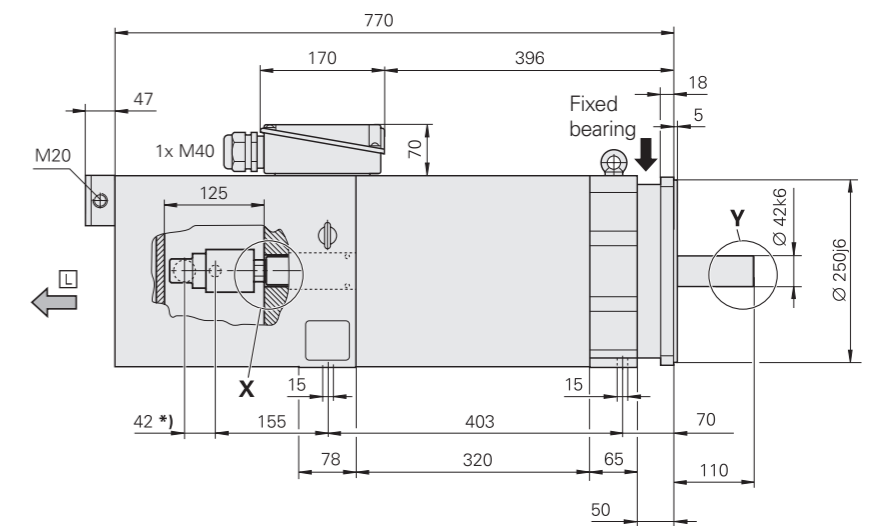
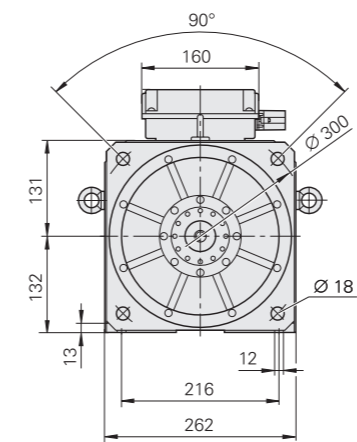
With spindle bearing



QAN 260LH



QAN 260UH



☐ = Air flow

QAN 260 MH

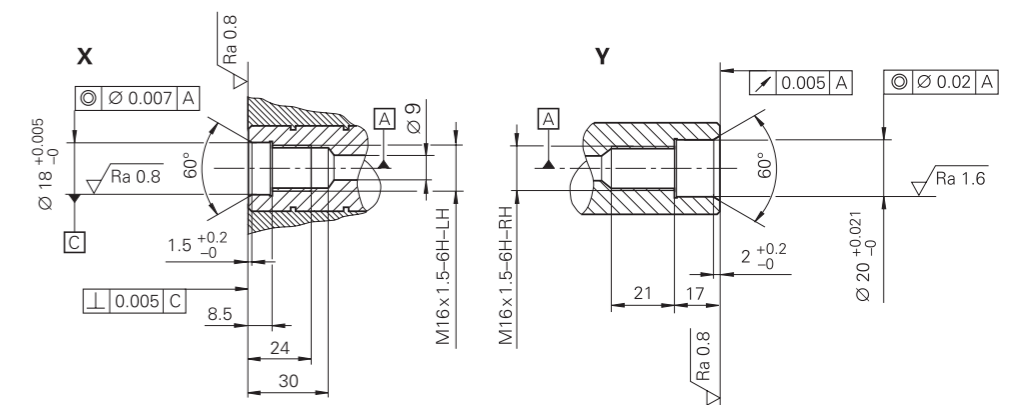
M20: 6 mm to 12 mm
M40: 20 mm to 26 mm

QAN 260 LH/UH

M20: 6 mm to 12 mm
M40: 22 mm to 32 mm

*) = Coolant connection on the right side (e.g., from Deublin 1109-020-188)

mm
Tolerancing ISO 8015
ISO 2768 - m H
≤ 6 mm: ±0.2 mm



Asynchronous hollow-shaft motors

QAN 360UHW series

Hollow-shaft spindle motor with four pole pairs

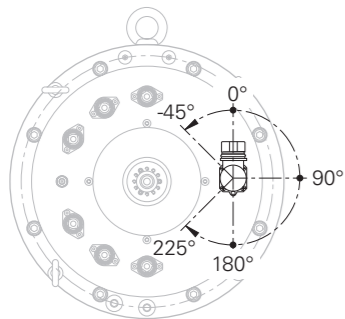
- With spindle bearing
- Water-cooled



Motor	QAN 360UHW	
	Wye connection	Delta connection
Rated voltage U_N	420 V	320 V
Rated power output P_N	43.2 kW	
Rated shaft speed n_N	450 rpm	780 rpm
Rated torque M_N (105 K)	917 Nm	529 Nm
Rated current I_N (105 K)	113 A	124 A
Efficiency	0.82	0.89
Max. speed $n_{max}^{1)}$ Spindle bearing	7000 rpm	
Max. current I_{max}	190 A	
Mass m	483 kg	
Rotor inertia J	5990 kg·cm ²	
Protection	IP43	
Mounting direction	Horizontal: IM B5 Vertical: IM V1	
ID with key	641936-25 641936-05	

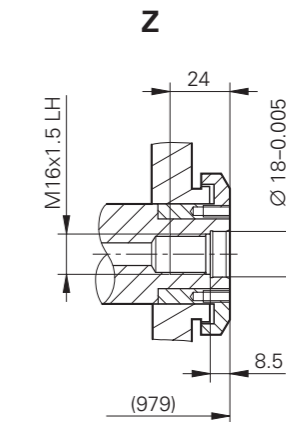
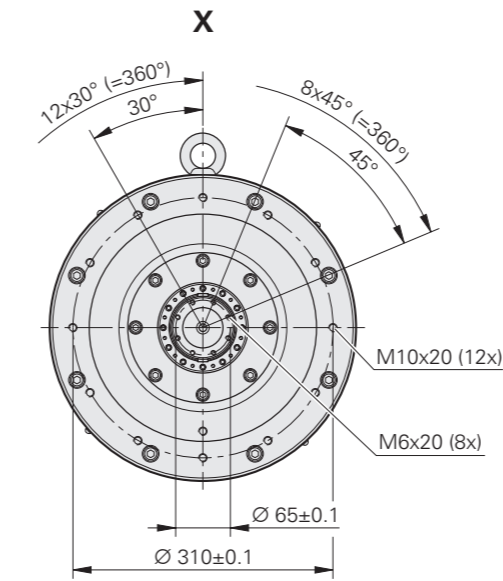
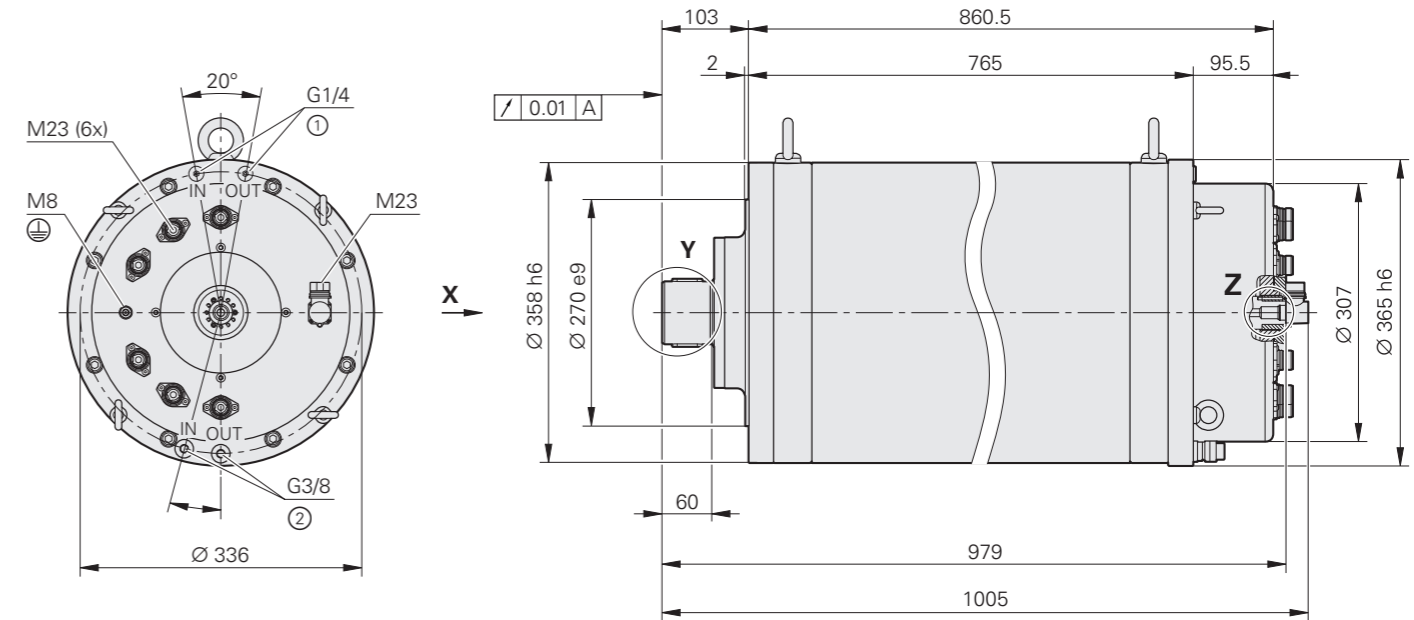
¹⁾ The maximum shaft speed depends on the application conditions of the motor, such as the shaft load (see the *Motors* Technical Manual)

Rotatable connections

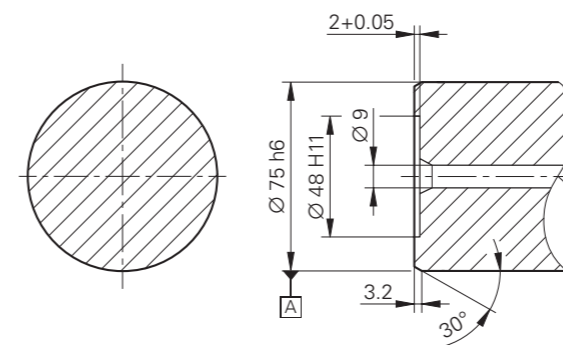


QAN 360UHW

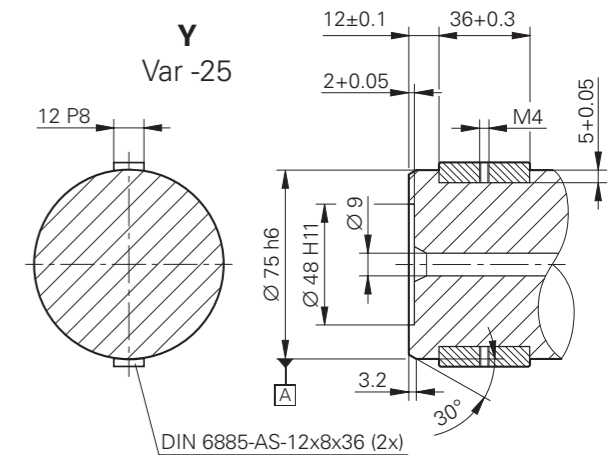
With spindle bearing



Y Var -05



Y Var -25



- 1 = Connection for sealing air
- 2 = Connection for coolant

mm
Tolerancing ISO 8015
ISO 2768 - m H
≤ 6 mm: ±0.2 mm

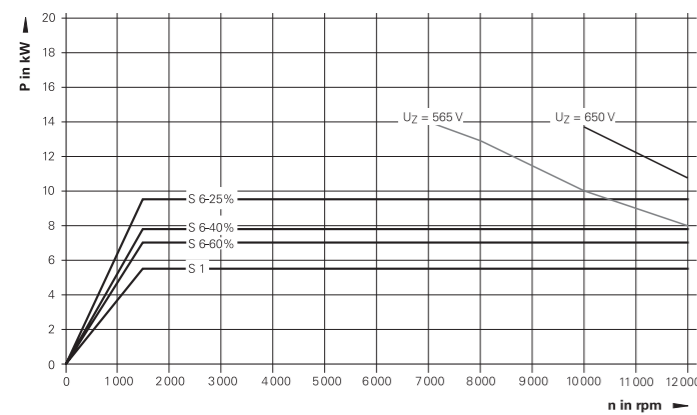
Asynchronous motors

Power and torque characteristics

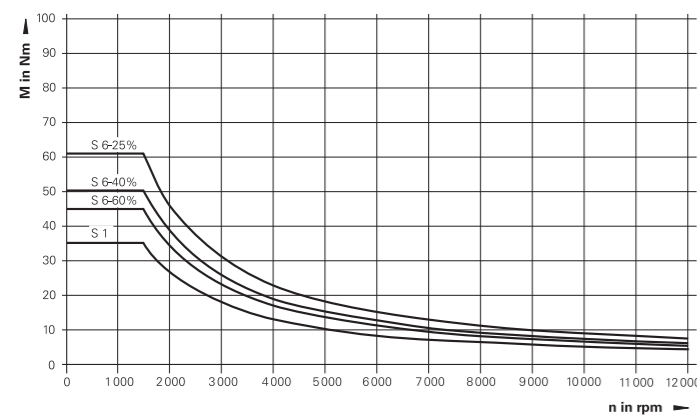
QAN 200M

Duty cycle	Speed n	Power P	Torque M	Current I
S1	1500 rpm	5.5 kW	35.0 Nm	18.0 A
	6000 rpm	5.5 kW	8.8 Nm	–
	12000 rpm	5.5 kW	4.4 Nm	–
S6-60%	1500 rpm	7.0 kW	44.7 Nm	22.0 A
	6000 rpm	7.0 kW	11.2 Nm	–
	12000 rpm	7.0 kW	5.6 Nm	–
S6-40%	1500 rpm	7.9 kW	50.4 Nm	24.0 A
	6000 rpm	7.9 kW	12.6 Nm	–
	12000 rpm	7.9 kW	6.3 Nm	–
S6-25%	1500 rpm	9.5 kW	60.7 Nm	28.0 A
	6000 rpm	9.5 kW	15.2 Nm	–
	12000 rpm	9.5 kW	7.6 Nm	–

Power characteristic curve



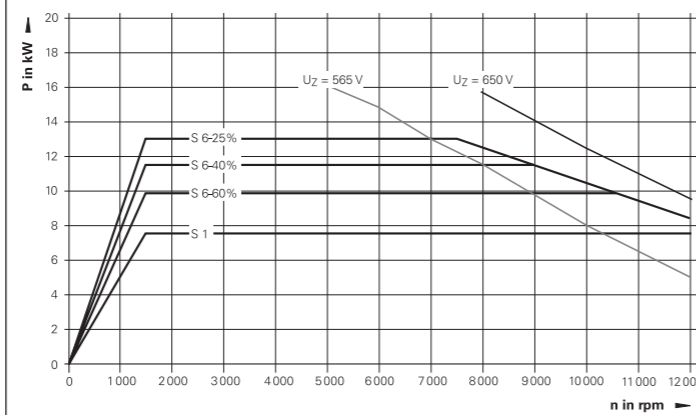
Torque characteristic curve



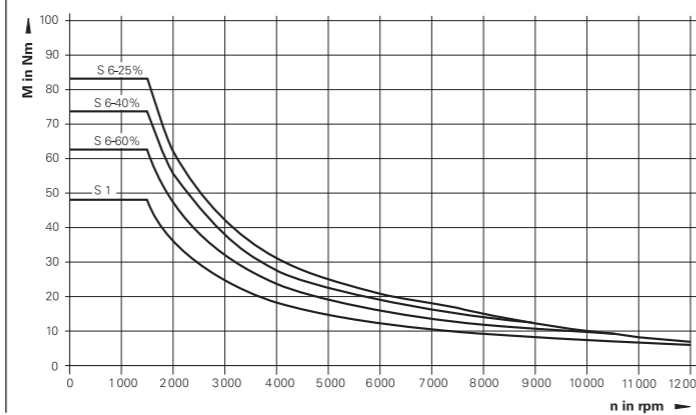
QAN 200L

Duty cycle	Speed n	Power P	Torque M	Current I
S1	1500 rpm	7.5 kW	47.8 Nm	20.1 A
	6000 rpm	7.5 kW	12.0 Nm	–
	12000 rpm	7.5 kW	6.0 Nm	–
S6-60%	1500 rpm	9.8 kW	62.6 Nm	24.0 A
	10700 rpm	9.8 kW	9.5 Nm	–
	12000 rpm	8.5 kW	6.8 Nm	–
S6-40%	1500 rpm	11.5 kW	73.4 Nm	27.0 A
	9000 rpm	11.5 kW	11.0 Nm	–
	12000 rpm	8.5 kW	6.8 Nm	–
S6-25%	1500 rpm	13.0 kW	83.0 Nm	31.0 A
	7500 rpm	13.0 kW	16.6 Nm	–
	12000 rpm	8.5 kW	6.8 Nm	–

Power characteristic curve



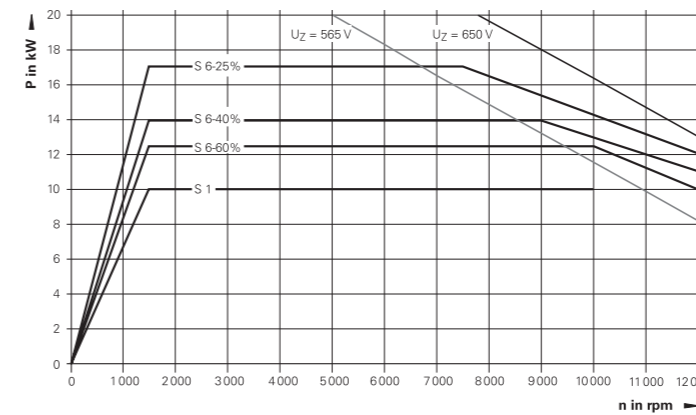
Torque characteristic curve



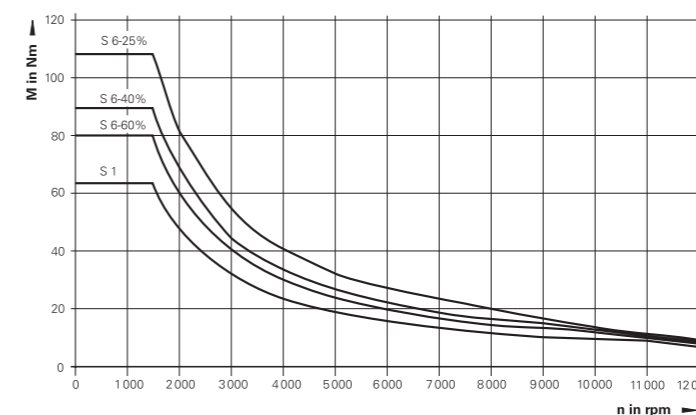
QAN 200U

Duty cycle	Speed n	Power P	Torque M	Current I
S1	1500 rpm	10.0 kW	63.7 Nm	25.0 A
	10000 rpm	10.0 kW	9.5 Nm	–
	12000 rpm	8.0 kW	6.4 Nm	–
S6-60%	1500 rpm	12.5 kW	79.8 Nm	29.0 A
	10000 rpm	12.5 kW	11.9 Nm	–
	12000 rpm	10.0 kW	8.0 Nm	–
S6-40%	1500 rpm	14.0 kW	89.4 Nm	32.0 A
	9000 rpm	14.0 kW	14.6 Nm	–
	12000 rpm	11.0 kW	8.8 Nm	–
S6-25%	1500 rpm	17.0 kW	108.6 Nm	37.0 A
	7500 rpm	17.0 kW	21.7 Nm	–
	12000 rpm	12.0 kW	9.5 Nm	–

Power characteristic curve



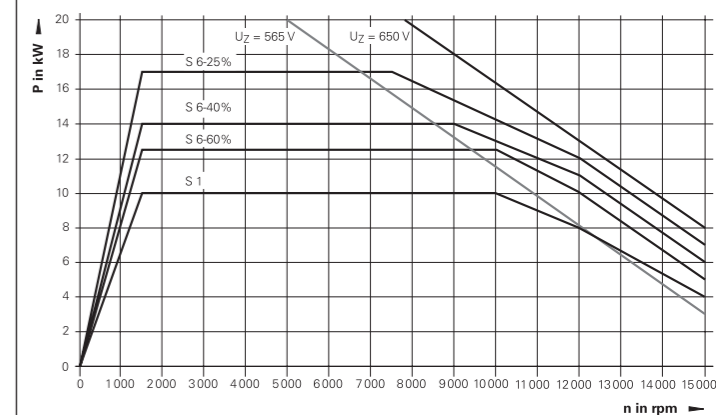
Torque characteristic curve



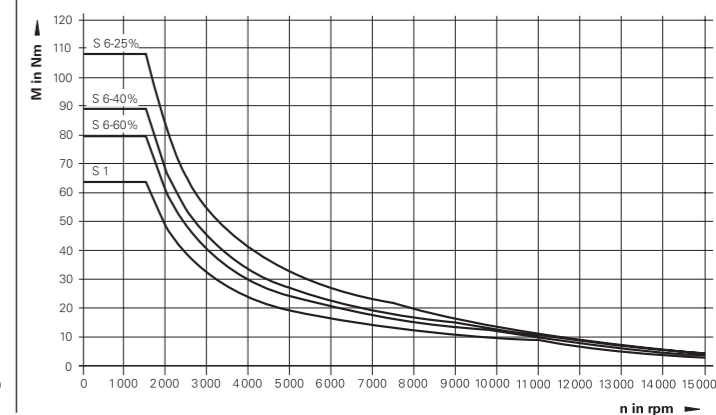
QAN 200UH

Duty cycle	Speed n	Power P	Torque M	Current I
S1	1500 rpm	10.0 kW	63.7 Nm	25.0 A
	10000 rpm	10.0 kW	9.5 Nm	–
	12000 rpm	8.0 kW	6.4 Nm	–
	15000 rpm	4.0 kW	2.5 Nm	–
S6-60%	1500 rpm	12.5 kW	79.8 Nm	29.0 A
	10000 rpm	12.5 kW	11.9 Nm	–
	12000 rpm	10.0 kW	8.0 Nm	–
	15000 rpm	5.0 kW	3.2 Nm	–
S6-40%	1500 rpm	14.0 kW	89.4 Nm	32.0 A
	9000 rpm	14.0 kW	19.1 Nm	–
	12000 rpm	11.0 kW	8.8 Nm	–
	15000 rpm	6.0 kW	3.8 Nm	–
S6-25%	1500 rpm	17.0 kW	108.6 Nm	37.0 A
	7500 rpm	17.0 kW	21.7 Nm	–
	12000 rpm	12.0 kW	9.5 Nm	–
	15000 rpm	7.0 kW	4.5 Nm	–

Power characteristic curve



Torque characteristic curve

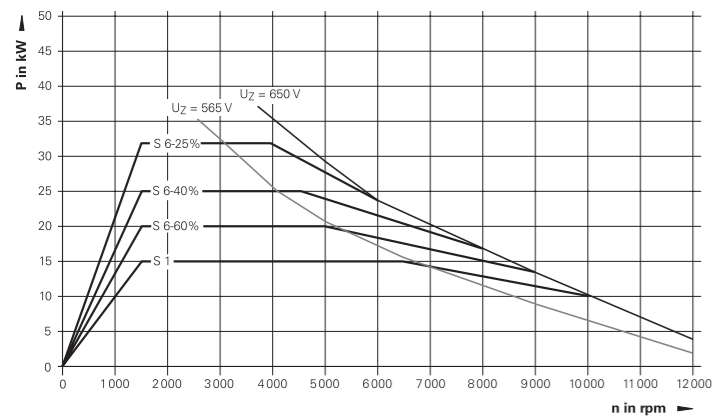


Note
 • **S6 mode**
 Cycle duration: 10 minutes
 During the rest period the motor is idle.

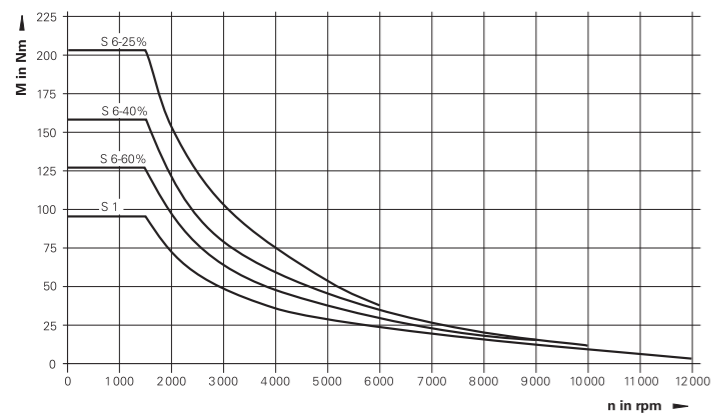
QAN 260M, QAN 260MH

Duty cycle	Speed n	Power P	Torque M	Current I
S1	1500 rpm	15.0 kW	95.5 Nm	35.0 A
	6500 rpm	15.0 kW	22.0 Nm	–
	10000 rpm	10.0 kW	9.5 Nm	–
	12000 rpm	4.0 kW	3.2 Nm	–
S6-60%	1500 rpm	20.0 kW	127.3 Nm	43.3 A
	5000 rpm	20.0 kW	38.2 Nm	–
	9000 rpm	13.5 kW	14.3 Nm	–
S6-40%	1500 rpm	25.0 kW	159.2 Nm	52.3 A
	4500 rpm	25.0 kW	53.1 Nm	–
	8000 rpm	16.8 kW	20.1 Nm	–
S6-25%	1500 rpm	32.0 kW	203.7 Nm	65.0 A
	4000 rpm	32.0 kW	76.4 Nm	–
	6000 rpm	23.7 kW	37.7 Nm	–

Power characteristic curve



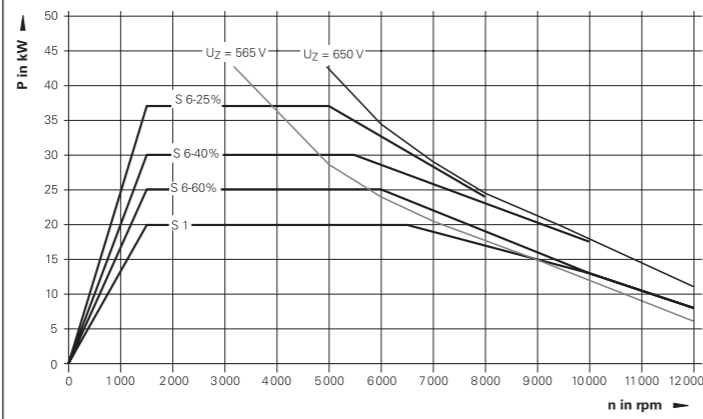
Torque characteristic curve



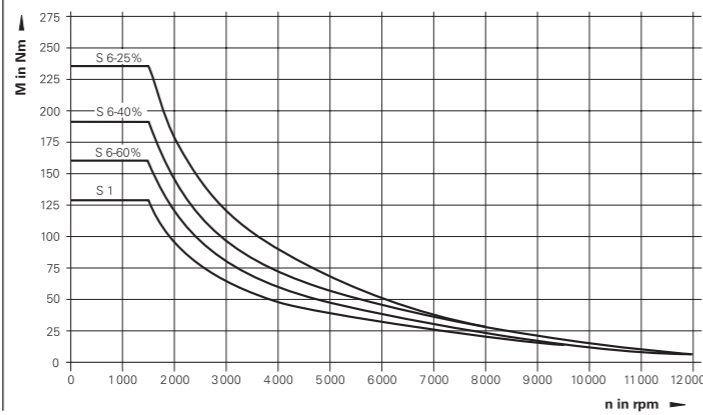
QAN 260L, QAN 260LH

Duty cycle	Speed n	Power P	Torque M	Current I
S1	1500 rpm	20.0 kW	127.3 Nm	46.0 A
	6500 rpm	20.0 kW	29.4 Nm	–
	10000 rpm	13.0 kW	12.4 Nm	–
	12000 rpm	8.0 kW	6.4 Nm	–
S6-60%	1500 rpm	25.0 kW	159.2 Nm	56.0 A
	6000 rpm	25.0 kW	39.4 Nm	–
	10000 rpm	16.0 kW	15.3 Nm	–
	12000 rpm	8.0 kW	6.4 Nm	–
S6-40%	1500 rpm	30.0 kW	191.0 Nm	65.0 A
	5500 rpm	30.0 kW	52.1 Nm	–
	10000 rpm	17.5 kW	16.7 Nm	–
S6-25%	1500 rpm	37.0 kW	235.5 Nm	79.0 A
	5000 rpm	37.0 kW	70.7 Nm	–
	8000 rpm	24.0 kW	28.6 Nm	–

Power characteristic curve



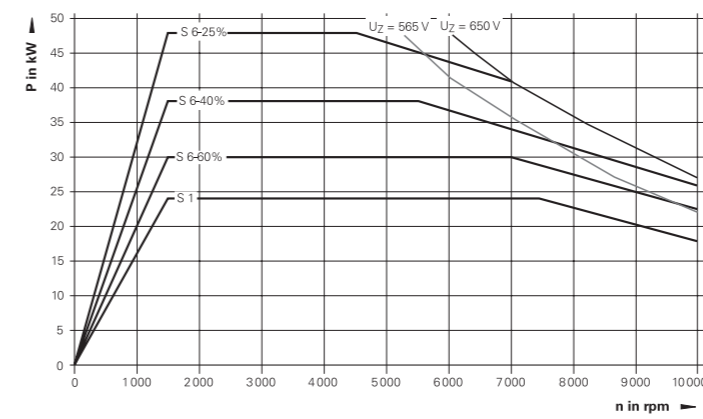
Torque characteristic curve



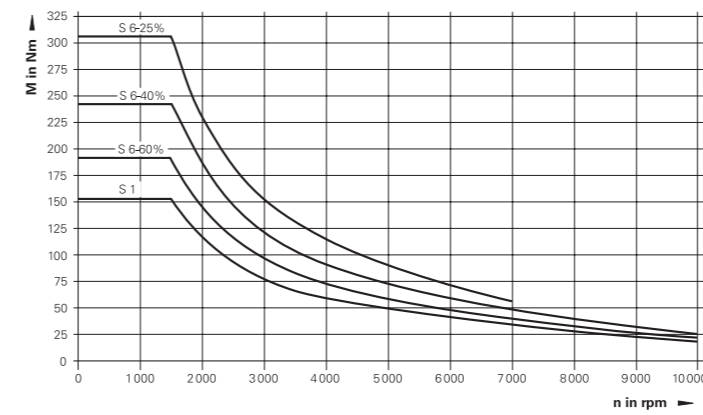
QAN 260U

Duty cycle	Speed n	Power P	Torque M	Current I
S1	1500 rpm	24.0 kW	152.8 Nm	58.0 A
	7400 rpm	24.0 kW	31.0 Nm	–
	10000 rpm	18.0 kW	17.2 Nm	–
S6-60%	1500 rpm	30.0 kW	191.0 Nm	67.2 A
	7000 rpm	30.0 kW	40.9 Nm	–
	10000 rpm	22.5 kW	21.5 Nm	–
S6-40%	1500 rpm	38.0 kW	241.9 Nm	81.8 A
	5500 rpm	38.0 kW	66.0 Nm	–
	10000 rpm	26.0 kW	24.8 Nm	–
S6-25%	1500 rpm	48.0 kW	305.6 Nm	100.6 A
	4500 rpm	48.0 kW	101.9 Nm	–
	7000 rpm	41.0 kW	55.9 Nm	–

Power characteristic curve



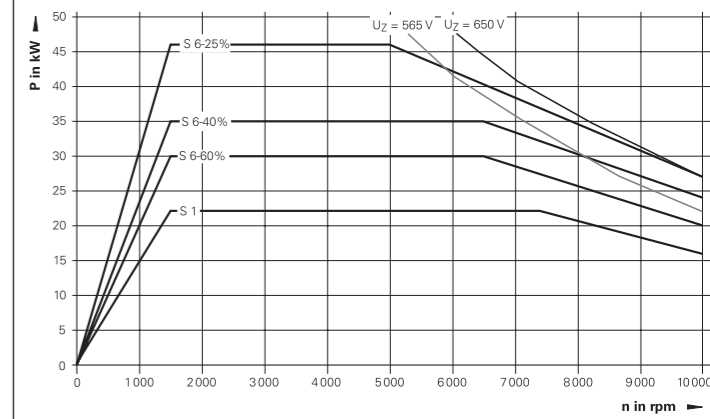
Torque characteristic curve



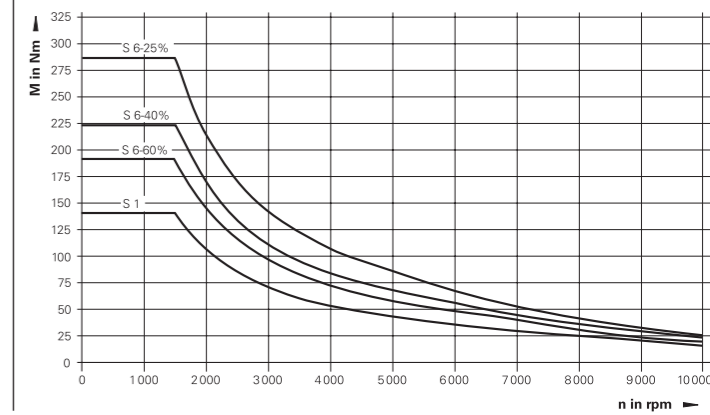
QAN 260UH

Duty cycle	Speed n	Power P	Torque M	Current I
S1	1500 rpm	22.0 kW	140.1 Nm	54.0 A
	7400 rpm	22.0 kW	28.4 Nm	–
	10000 rpm	16.0 kW	15.3 Nm	–
S6-60%	1500 rpm	30.0 kW	191.0 Nm	67.0 A
	6500 rpm	30.0 kW	44.1 Nm	–
	10000 rpm	20.0 kW	19.5 Nm	–
S6-40%	1500 rpm	35.0 kW	222.8 Nm	77.0 A
	6500 rpm	35.0 kW	66.8 Nm	–
	10000 rpm	24.0 kW	22.9 Nm	–
S6-25%	1500 rpm	46.0 kW	286.5 Nm	97.0 A
	5000 rpm	46.0 kW	85.9 Nm	–
	10000 rpm	27.0 kW	25.8 Nm	–

Power characteristic curve



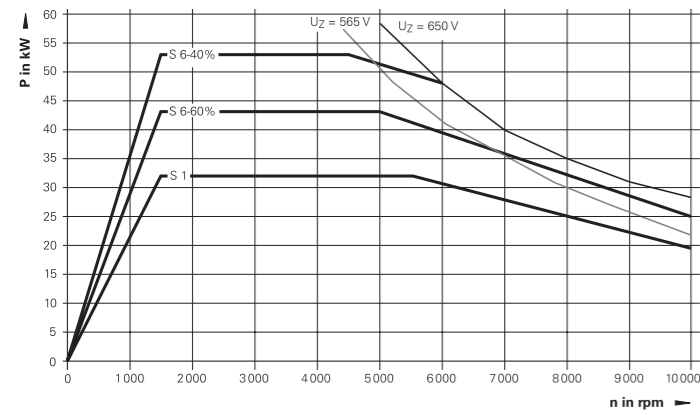
Torque characteristic curve



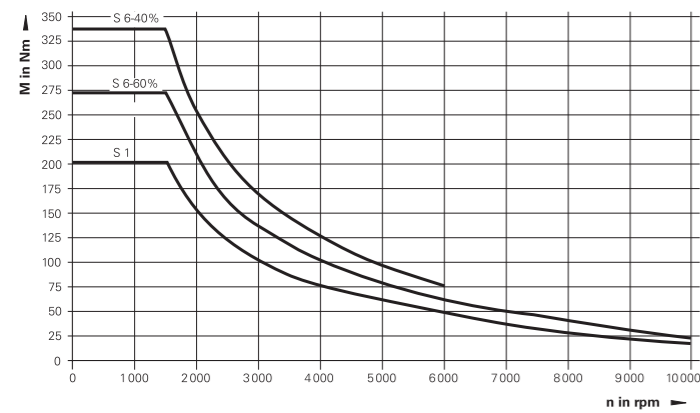
QAN 320M

Duty cycle	Speed n	Power P	Torque M	Current I
S1	1500 rpm	32.0 kW	203.7 Nm	77.5 A
	5500 rpm	32.0 kW	55.0 Nm	–
	10000 rpm	19.5 kW	18.6 Nm	–
S6-60%	1500 rpm	43.0 kW	273.7 Nm	98.0 A
	5500 rpm	43.0 kW	71.5 Nm	–
	10000 rpm	25.0 kW	23.9 Nm	–
S6-40%	1500 rpm	53.0 kW	337.4 Nm	118.0 A
	5500 rpm	53.0 kW	86.2 Nm	–
	6000 rpm	48.0 kW	76.4 Nm	–

Power characteristic curve



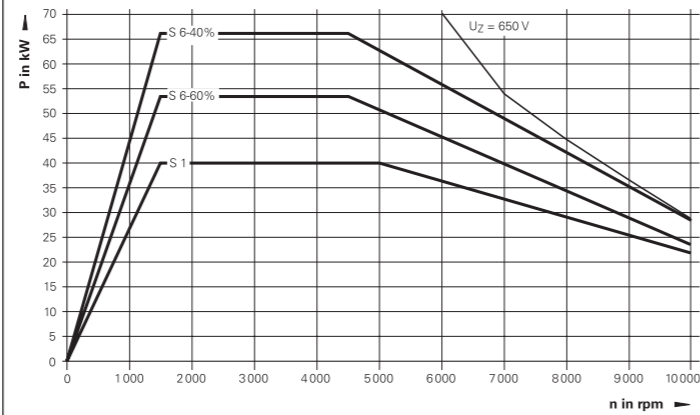
Torque characteristic curve



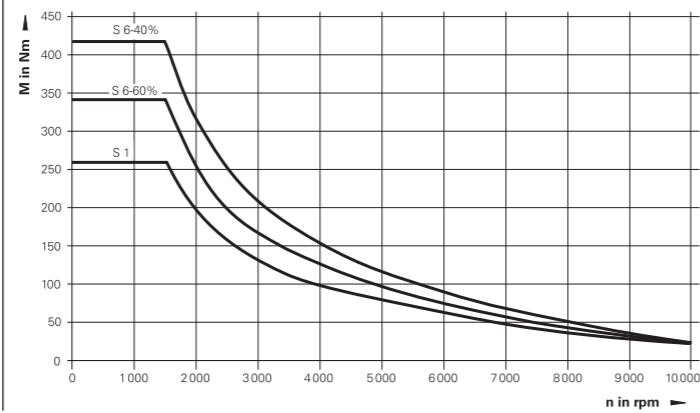
QAN 320L

Duty cycle	Speed n	Power P	Torque M	Current I
S1	1500 rpm	40.0 kW	254.6 Nm	99.0 A
	5000 rpm	40.0 kW	77.9 Nm	–
	10000 rpm	21.0 kW	21.0 Nm	–
S6-60%	1500 rpm	53.0 kW	337.4 Nm	123.0 A
	4500 rpm	53.0 kW	112.5 Nm	–
	10000 rpm	24.0 kW	22.9 Nm	–
S6-40%	1500 rpm	66.0 kW	420.2 Nm	148.0 A
	4500 rpm	66.0 kW	140.1 Nm	–
	10000 rpm	28.0 kW	26.7 Nm	–

Power characteristic curve



Torque characteristic curve

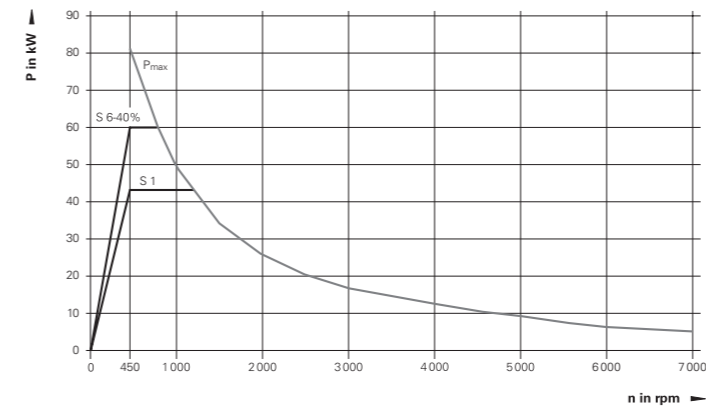


QAN 360UHW

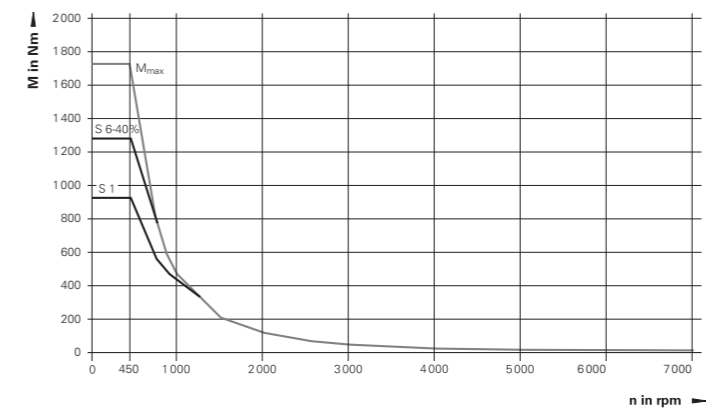
Wye connection

Duty cycle	Speed n	Power P	Torque M	Current I
S1	450 rpm	43.2 kW	917 Nm	113 A
	800 rpm	43.2 kW	515 Nm	–
S6-40%	450 rpm	60 kW	1290 Nm	–
	600 rpm	60 kW	955 Nm	–

Power characteristic curve



Torque characteristic curve

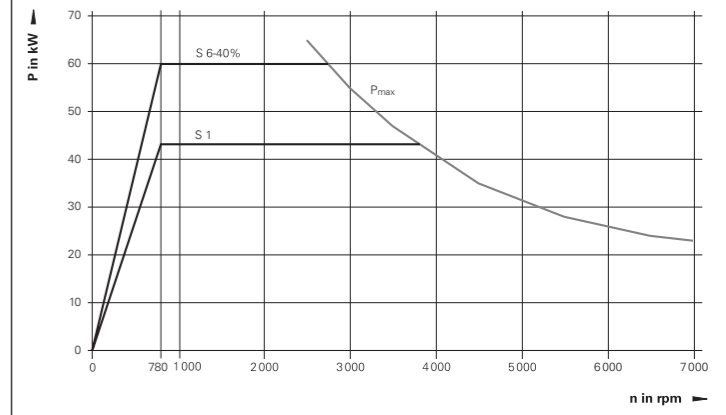


QAN 360UHW

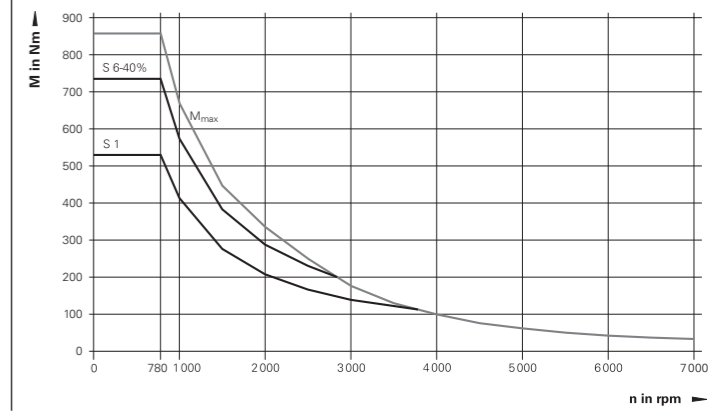
Delta connection

Duty cycle	Speed n	Power P	Torque M	Current I
S1	780 rpm	43.2 kW	529 Nm	124 A
	3500 rpm	43.2 kW	110 Nm	–
S6-40%	780 rpm	60 kW	720 Nm	–
	2500 rpm	60 kW	220 Nm	–

Power characteristic curve



Torque characteristic curve



Asynchronous motors

Cables

Power cables

Current load at ambient temperature of up to 40 °C

	Unassembled cable	Bend radius R for frequent flexing	Cable type	Diameter
Current load of up to 26 A (installation type B2)				
QAN 200M QAN 200L QAN 200U QAN 200UH	ID 818787-xx <i>ID 1213900-xx</i>	≥ 69 mm ≥ 109 mm	PUR [4 x 4 mm ²]	13.8 mm 14.5 mm
Current load of up to 45.2 A (installation type B2)				
QAN 260M QAN 260MH	ID 818782-xx <i>ID 1213901-xx</i>	≥ 102 mm ≥ 157 mm	PUR [4 x 10 mm ²]	20.3 mm 20.9 mm
Current load of up to 59.9 A (installation type B2)				
QAN 260L QAN 260LH QAN 260U QAN 260UH	ID 818510-xx <i>ID 1213902-xx</i>	≥ 133 mm ≥ 207 mm	PUR [4 x 16 mm ²]	26.5 mm 27.5 mm
Current load of up to 93.8 A (installation type B2)				
QAN 320M	ID 818781-xx <i>ID 1213903-xx</i>	≥ 173 mm ≥ 258 mm	PUR [4 x 35 mm ²]	34.5 mm 34.3 mm
Current load of up to 117.5 A (installation types C and E)				
QAN 320L	ID 818781-xx <i>ID 1213903-xx</i>	≥ 173 mm ≥ 258 mm	PUR [4 x 35 mm ²]	34.5 mm 34.3 mm
Current load of up to 125.7 A (installation types C and E)				
QAN 360UHW	ID 1213903-xx	≥ 258 mm	PUR [4 x 35 mm ²]	34.3 mm
Current load of up to 124.5 A (installation types C and E)				
QAN 360UHW	ID 696060-03	≥ 111 mm	–	35 mm

Italics: shielded power cable

Encoder cables

	Cable length	Cable complete with connectors	Line drop compensator	Extension cable	Bend radius R for frequent flexing
All QANs	< 30 m	ID 289440-xx	–	ID 336847-xx (as needed)	≥ 100 mm
	> 30 m	ID 289440-xx	ID 370226-01	ID 336847-xx	

Cables for fans

	Unassembled cable	Bend radius R for frequent flexing	Cable type	Diameter
All QANs	ID 818789-xx <i>ID 1213898-xx</i>	≥ 50 mm ≥ 82 mm	PUR [4 x 0.75 mm ²]	9.9 mm 10.9 mm

Italics: shielded power cable



Further information:

For detailed information about the electrical connection of the QAN 360UHW, see the *Motors Technical Manual*.

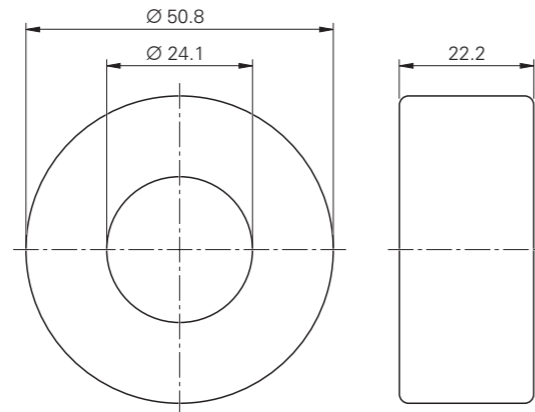
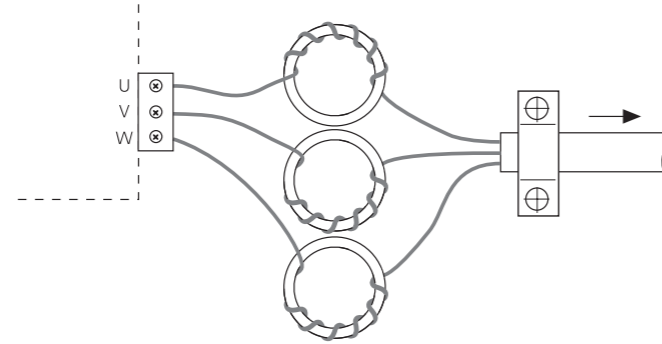
Accessories

Toroidal cores

Large line lengths can result in voltage peaks that may damage the motor. For this reason, toroidal cores need to be used with motor lines longer than 15 m. One toroidal core is required per phase. The toroidal cores must be located in close proximity to the inverter (max. 2 m).

Toroidal core

For motor line > 15 m
ID 827054-01

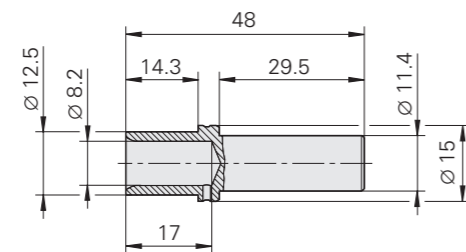


M23 connector set

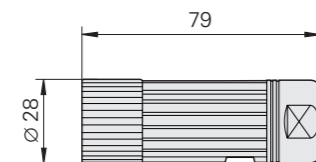
For crimping the 1-pin M23 connector for the motor connection, the connector set contains the following components:

- Six connectors
- Six female contacts
- Mounting Instructions

ID 1288941-01



Female contact



Connector

mm
Tolerancing ISO 8015
ISO 2768 - m H
 ≤ 6 mm: ± 0.2 mm

Direct drive torque motors

Besides synchronous and asynchronous motors, HEIDENHAIN offers a comprehensive assortment of standard torque motors. With more than 100 models, almost any requirement can be met.

Overview of the most important features:

- Outside diameter of up to 1290 mm
- Large hollow shaft of up to 1070 mm
- Maximum rated speed of up to 5170 rpm
- Peak torque of up to 31 200 Nm
- Very high continuous torque
- Field-weakening compliant
- With or without cage with coolant ducts
- Conceived for highly demanding applications

Direct coupling of the load with the rotor eliminates the need for any mechanical transfer elements such as transmissions, toothed belts, or worm gears. The maintenance-free direct drive motors therefore offer excellent dynamic performance while guaranteeing a long service life.

The torque motors offer the advantage of a patented, cogging-free design. This design provides outstanding peak power density in the magnet gap as well as unique thermal efficiency, thereby constituting a significant advantage with respect to precision that reacts negatively to thermal drift.

Further advantages of torque motors are:

- Patented and proven technology
- Excellent performance
- High quality
- Easy integration
- Wide product range

The torque motors are developed and produced by ETEL, a company of the HEIDENHAIN Group.

Further information:

For more information about the torque motors from ETEL, visit www.etel.ch



Direct drive torque motors

HEIDENHAIN

DR. JOHANNES HEIDENHAIN GmbH

Dr.-Johannes-Heidenhain-Straße 5
83301 Traunreut, Germany

☎ +49 8669 31-0

FAXI +49 8669 32-5061

E-mail: info@heidenhain.de

www.heidenhain.de

Vollständige und weitere Adressen siehe www.heidenhain.de
For complete and further addresses see www.heidenhain.de

DE	HEIDENHAIN Vertrieb Deutschland 83301 Traunreut, Deutschland ☎ 08669 31-3132 FAXI 08669 32-3132 E-Mail: hd@heidenhain.de	DK	Denmark → SE	NZ	Llama ENGINEERING Ltd 5012 Wellington, New Zealand E-mail: info@llamaengineering.co.nz
	HEIDENHAIN Technisches Büro Nord 12681 Berlin, Deutschland ☎ 030 54705-240	ES	FARRESA ELECTRONICA S.A. 08028 Barcelona, Spain www.farresa.es	PH	MACHINEBANKS' CORPORATION Quezon City, Philippines 1113 E-mail: info@machinebanks.com
	HEIDENHAIN Technisches Büro Mitte 07751 Jena, Deutschland ☎ 03641 4728-250	FI	HEIDENHAIN Scandinavia AB 01740 Vantaa, Finland www.heidenhain.fi	PL	APS 02-384 Warszawa, Poland www.heidenhain.pl
	HEIDENHAIN Technisches Büro West 44379 Dortmund, Deutschland ☎ 0231 618083-0	FR	HEIDENHAIN FRANCE sarl 92310 Sèvres, France www.heidenhain.fr	PT	FARRESA ELECTRÓNICA, LDA. 4470 - 177 Maia, Portugal www.farresa.pt
	HEIDENHAIN Technisches Büro Südwest 70771 Leinfelden-Echterdingen, Deutschland ☎ 0711 993395-0	GB	HEIDENHAIN (G.B.) Limited Burgess Hill RH15 9RD, United Kingdom www.heidenhain.co.uk	RO	HEIDENHAIN Reprezentantă Romania Braşov, 500407, Romania www.heidenhain.ro
	HEIDENHAIN Technisches Büro Südost 83301 Traunreut, Deutschland ☎ 08669 31-1337	GR	MB Milionis Vassilis 17341 Athens, Greece www.heidenhain.gr	RS	Serbia → BG
		HR	Croatia → SL	RU	GERTNER Service 119002 Moscow, Russian Federation www.heidenhain.ru
		HU	HEIDENHAIN Kereskedelmi Képviselet 1239 Budapest, Hungary www.heidenhain.hu	SE	HEIDENHAIN Scandinavia AB 12739 Skärholmen, Sweden www.heidenhain.se
AR	NAKASE SRL. B1653AOX Villa Ballester, Argentina www.heidenhain.com.ar	ID	PT Servitama Era Toolsindo Jakarta 13930, Indonesia E-mail: ptset@group.gts.co.id	SG	HEIDENHAIN PACIFIC PTE LTD Singapore 408593 www.heidenhain.com.sg
AT	HEIDENHAIN Techn. Büro Österreich 83301 Traunreut, Germany www.heidenhain.de	IL	NEUMO VARGUS MARKETING LTD. Holon, 5885948, Israel E-mail: neumo@neumo-vargus.co.il	SK	KOPRETINA TN s.r.o. 91101 Trenčin, Slovakia www.kopretina.sk
AU	FCR MOTION TECHNOLOGY PTY LTD Laverton North Victoria 3026, Australia E-mail: sales@fcrmotion.com	IN	HEIDENHAIN Optics & Electronics India Private Limited Chetpet, Chennai 600 031, India www.heidenhain.in	SL	NAVO d.o.o. 2000 Maribor, Slovenia www.heidenhain.si
BE	HEIDENHAIN NV 1760 Roosdaal, Belgium www.heidenhain.be	IT	HEIDENHAIN ITALIANA S.r.l. 20128 Milano, Italy www.heidenhain.it	TH	HEIDENHAIN (THAILAND) LTD Bangkok 10250, Thailand www.heidenhain.co.th
BG	ESD Bulgaria Ltd. Sofia 1172, Bulgaria www.esd.bg	JP	HEIDENHAIN K.K. Tokyo 102-0083, Japan www.heidenhain.co.jp	TR	T&M Mühendislik San. ve Tic. LTD. ŞTİ. 34775 Y. Dudullu – Umraniye-Istanbul, Turkey www.heidenhain.com.tr
BR	HEIDENHAIN Brasil Ltda. 04763-070 – São Paulo – SP, Brazil www.heidenhain.com.br	KR	HEIDENHAIN Korea Ltd. Anyang-si, Gyeonggi-do, 14087 South Korea www.heidenhain.co.kr	TW	HEIDENHAIN CO., LTD. Taichung 40768, Taiwan www.heidenhain.com.tw
BY	GERTNER Service 220026 Minsk, Belarus www.heidenhain.by	MX	HEIDENHAIN CORPORATION MEXICO 20290 Aguascalientes, AGS., Mexico E-mail: info@heidenhain.com	UA	GERTNER Service 02094 Kiev, Ukraine www.heidenhain.ua
CA	HEIDENHAIN CORPORATION Mississauga, Ontario L5T2N2, Canada www.heidenhain.com	MY	ISOSERVE SDN. BHD. 43200 Balakong, Selangor E-mail: sales@isoserve.com.my	US	HEIDENHAIN CORPORATION Schaumburg, IL 60173-5337, USA www.heidenhain.us
CH	HEIDENHAIN (SCHWEIZ) AG 8603 Schwerzenbach, Switzerland www.heidenhain.ch	NL	HEIDENHAIN NEDERLAND B.V. 6716 BM Ede, Netherlands www.heidenhain.nl	VN	AMS Co. Ltd HCM City, Vietnam E-mail: davidgoh@amsvn.com
CN	DR. JOHANNES HEIDENHAIN (CHINA) Co., Ltd. Beijing 101312, China www.heidenhain.com.cn	NO	HEIDENHAIN Scandinavia AB 7300 Orkanger, Norway www.heidenhain.no	ZA	MAFEMA SALES SERVICES C.C. Kyalami 1684, South Africa www.heidenhain.co.za
CZ	HEIDENHAIN s.r.o. 102 00 Praha 10, Czech Republic www.heidenhain.cz				