

# Trade UP

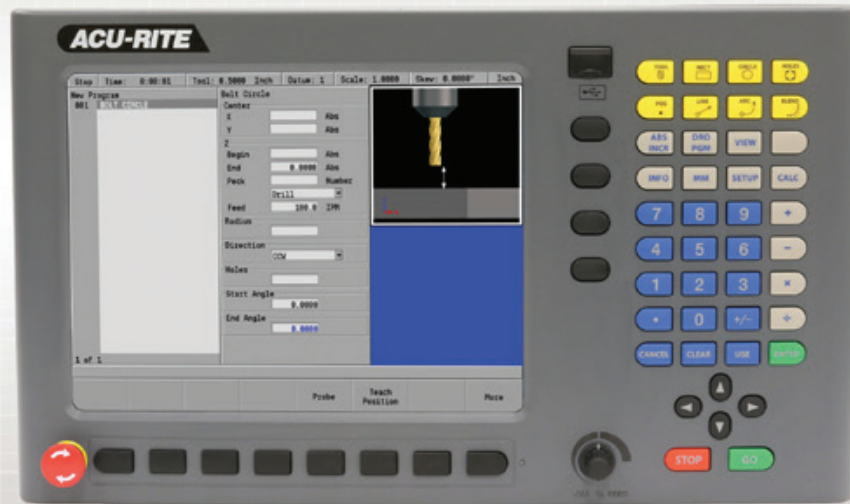
Up to 25% savings!

## MILLPWR<sup>G2</sup>

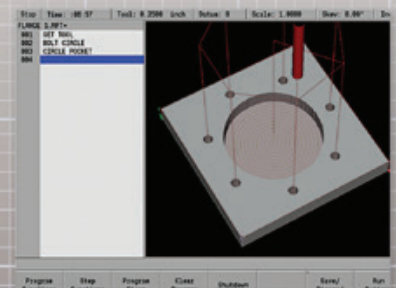
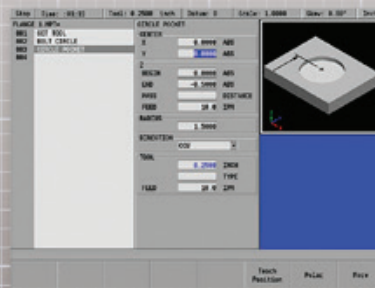
CNC System for Knee Mills and Bed Mills

2 or 3 Axes Control / 3 Axes Readout

Improve Efficiency. Increase Profitability.



Upgrade Your Old MILLPWR Today!



# ACU-RITE<sup>®</sup>

[www.acu-rite.com](http://www.acu-rite.com)

# MILLPWR<sup>G2</sup>

CNC System for Knee Mills and Bed Mills

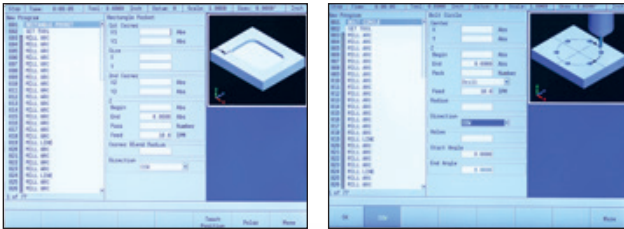
2 or 3 Axes Control / 3 Axes Readout



Boosting productivity is now **POWERFUL EASY ...**

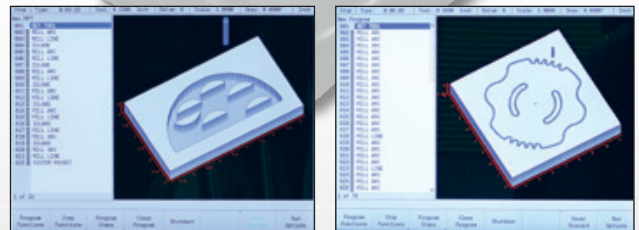
**Upgrade** Your Current MILLPWR Today!

Upgrading from an old MILLPWR requires the New G2 console and mounting arm.



## NEW! MILLPWR<sup>G2</sup> Features

- Larger Display (12.1" 1024 x 768 TFT LCD)
- 2D and 3D Graphic Views
- Enhanced, Intuitive Program Navigation
- Increased Program Size Limit (Up to 9999 Steps)
- Auto Save Feature
- USB Connectivity - Front & Back
- G-Code with Graphics Support AND Simple Edit Capabilities
- Preview Programs with Graphics and Estimated Machine Time
- Improved Error Compensation
- Multiple Datums and Near Zero Warning in DRO Mode
- On-Screen Help with Text AND Graphics
- Die-Cast Metal Bezel and Back



**Plus** MILLPWR<sup>G2</sup> is backed by a comprehensive 2-year warranty and supported by a nationwide network of factory trained and certified distributors.

# ACU-RITE<sup>®</sup>

[www.acu-rite.com](http://www.acu-rite.com)



DRO Mode	MILLPWR <sup>G2</sup>	MILLPWR
Multiple Datums (Fixture Offset)	99	No
Skew	Yes	Yes
Zero Reset	Yes	Yes
Near Zero Warning	Yes	No

PGM Mode	MILLPWR <sup>G2</sup>	MILLPWR
Estimated Machining Time	Yes	No
Graphic View	2D Line / 3D Line / 3D Solid	2D
Block Form	Yes, w/ User Override	No
Custom Pocket & Islands	Ramp Feed & Optimized Path	Plunge Feed
Replication (Repeat, Rotate, Mirror)	Yes	Yes
Engrave (Line / Arc)	Yes	Yes
Program Manager Navigation	Tree w/ Program Type Filter	Menu / Sub-Menus
Long Program Names	Yes	No
Program Preview	Listing & Graphic w/ Estimated Time	No
External Storage	USB / Network (Ethernet)	Floppy / Compact Flash / RS-232
Explode Step	Yes	Yes
Reverse (Step / Path)	Yes	Yes
Shift Steps	Yes	No
Auto Save (Program)	Yes	No
Program Size Limit (MPT only)	9999 Steps	999 Steps
DXF File Import	Yes	Yes
G-code Program	Yes, w/ Graphics and Edit Capabilities including Radius Compensation and Drill Cycles	Yes, no edit capability
On-Screen Help	Text & Graphics	Text Only
Parts Counter & Clock	Yes	No
Manual / Auto Z Control	Yes, 3 Axes	Yes
Optional Stop (G-code Only)	Yes	No
Feed Override	Potentiometer	Up / Down Button
Error Compensation	Linear & Bidirectional Non-linear	Linear

Hardware	MILLPWR <sup>G2</sup>	MILLPWR
Processor	1.4 GHz Celeron® M	STPC 100
Display	12.1" 1024 x 768 TFT LCD	10.4" 640 X 480 LCD
Internal Storage	2.5 GB Flash (User)	512 MB Flash (Code & User)
Remote Pendant (Stop / Go)	Yes	Yes
Housing	Die Cast Metal (Bezel / Back)	Die Cast Metal Back; Plastic Bezel
Connections	Ethernet, USB (x2), RS-232	RS-232
Protection	ID 54 (Front) / ID 40 (Back)	

**NOTE:** Upgrade may require additional hardware i.e. IO/spindle control, etc.



**877-920-2703**

333 State Parkway | Schaumburg, IL 60173-5337

**ACU-RITE®**  
www.acu-rite.com