



Aspects of Energy Efficiency in Machine Tools

Discussions of the efficient use of energy have become more frequent in many sectors of industry. Machine tools comprise numerous motors and auxiliary components whose energy consumption can vary strongly during machining. The main spindle drive, for example, and the coolant system work near their rated power during roughing with a high stock-removal rate, while the power consumption during finishing is significantly lower. There is a very close interdependence between the



individual components and subassemblies of a machine tool and aspects of productivity and quality. From a detailed examination of manufacturing processes to the power consumption of individual components, potential for savings can be evaluated and measures can be defined for the efficient use of energy.

In many branches of the investment goods industry, energy efficiency has developed into an important product characteristic. Geared motors for materials handling technology have been divided into efficiency classes for some time now. A multitude of ideas has been tried for increasing energy efficiency in manufacturing with machine tools. Potential savings result with regard to the base load of machine tools that require energy consumption even in nonproductive phases. The base load is determined substantially by the auxiliary components of a machine. Besides the use of energy-efficient motors in the auxiliary components, many

continued on next page

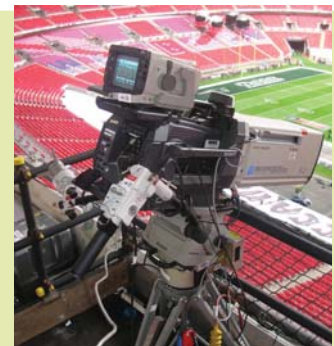
Did You Know...

...that HEIDENHAIN ERN series encoders are used to position lenses in many of those large, high quality television cameras used in professional sports? Sportvision, Inc., well known for their virtual Yellow 1st and Ten™ Line seen when viewing NFL football, uses HEIDENHAIN encoders to ensure accurate implementation of that process – and more – within the cameras.

“We have enhanced probably 200 lenses throughout the country with HEIDENHAIN’s encoders,” explained Rand Pendleton, Senior Scientist and Advisor in Sportvision’s Mountain View, CA location. “Besides our Yellow Line for football, our camera modifications facilitate all kinds of virtual effects including adding a lead-off line or the K-zone™ pitch effect in baseball, a “Glowing Puck” for NHL or putting a pointer to a car in NASCAR.”

Sportvision is a leading innovator of digital sports content and broadcast enhancements, producing digital content and live TV enhancements on over 3,000 live events all over the world. “We are in the business to provide visual enhancements to sporting events in order to bring better appreciation to the game for the fans.”

Pendleton estimates that each television camera modified by Sportvision contains a \$50,000 - \$100,000 glass lens, and that their alterations allow the operator to do effects at every video frame, where they know the state of the lens, and basically where the camera is, where it is pointed, and what the field-of-view is. “From there, we can do our magic, from going from 2D to 3D or back.”



continued on next page

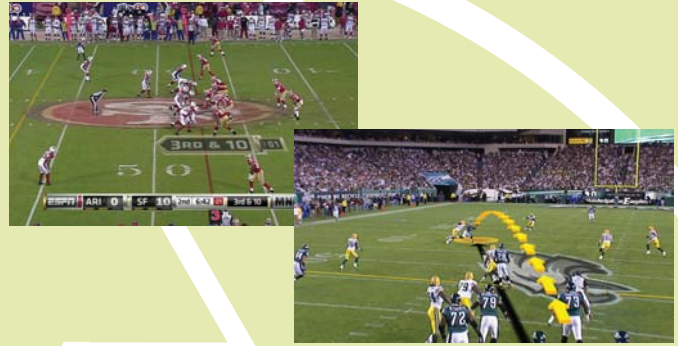
Contents...

- Page 1-10 **Aspects of Energy Efficiency in Machine Tools**
- Page 1-2 **Did You Know...**
- Page 11 **HEIDENHAIN’s Museum Donation Makes an Impact**
- Page 12 **NEW TNC 640 Control Introduced for Milling and Turning Machines**
- Page 12 **Technical Tidbits: Accuracy, Repeatability and Resolution—What’s the Difference?**
- Page 13 **Chris Weber: HEIDENHAIN on Worldwide Exhibit**

Did You Know... *continued from Page 1*

He explains that the modifications with the HEIDENHAIN encoders came at the same time of HD technology and the necessity to be more precise. The key parameter of the lens is the accuracy of the field-of-view “which is why we mount the HEIDENHAIN encoders on an internal shaft in the lens that is mechanically adjusting the telescoping lens element inside the larger lens body.

“If it is an HD lens, it will have the HEIDENHAIN encoder in it,” said Pendleton, “and one that is performing well since once it’s in, we don’t even have to think about it. Then as part of every pre-game process, each lens is calibrated to go from encoder count to actual angular field of view, and thus the magic begins.”



Aspects of Energy Efficiency in Machine Tools *continued from Page 1*

possibilities for reducing the base load can be found in proper energy management. With energy management, consumers are specifically switched off by the machine control in nonproductive phases.

Measures to support the operator during setup also increase energy efficiency, because they shorten nonproductive phases and reduce the influence of the base load. Scrap inevitably increases energy consumption per good part. Manufacturing with accuracy starting from the very first part can therefore become a decisive factor for the energy efficiency of a machine tool.

Machine designs with balanced thermal behavior and precise position measuring technology have a distinct advantage here.

Energy demand during milling The power requirements of a milling process are divided into the following consumer groups:

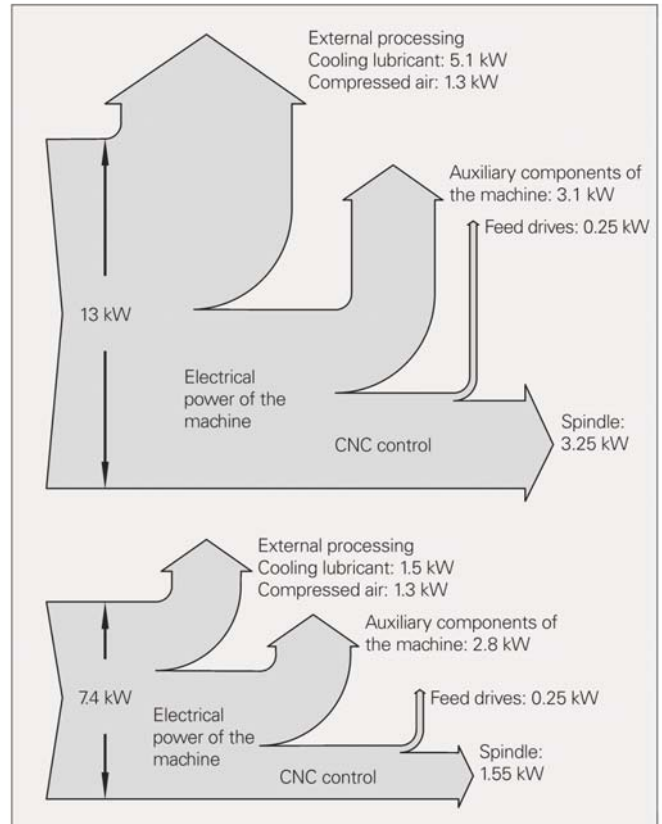
- Cooling lubricant processing
- Compressed air generation
- Electrically powered auxiliary components of the milling machine
- CNC control package with main spindle and feed axis motors

The proportionally calculated energy for lighting, ventilation and air conditioning is added to these groups. The energy demand of a milling process strongly depends on the size of the milling machine and the machining task.

In this example, an aluminum housing with dimensions of 150 mm x 50 mm x 25 mm is to be milled on a machining center with a work envelope of 850 mm x 700 mm x 500 mm. The mean total power consumption of all the above-mentioned consumer groups is 13 kW for roughing and 7.4 kW for finishing.



Housing for the observation of the power requirements of a milling process



Mean power requirement for manufacturing a housing part Above: roughing, below: finishing

Aspects of Energy Efficiency in Machine Tools *continued from Page 2*

detailed information on the distribution of energy consumption among the individual consumer groups.

The cooling lubricant is prepared centrally away from the milling machine (pumping, temperature stabilization). For roughing, this has a mean power requirement of 5.1 kW. For finishing, the mean power requirement decreases to 1.5 kW. Production readiness consumes almost no power. Dry machining offers great potential here for increasing energy and resource efficiency. In many milling applications, however, doing without the cooling lubricant can significantly increase the scrap rate and therefore increase mean energy consumption.

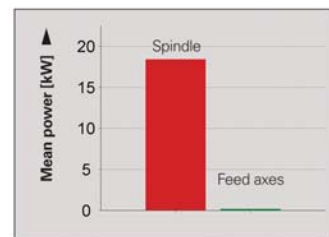
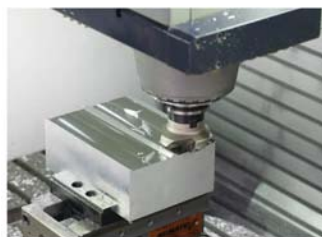
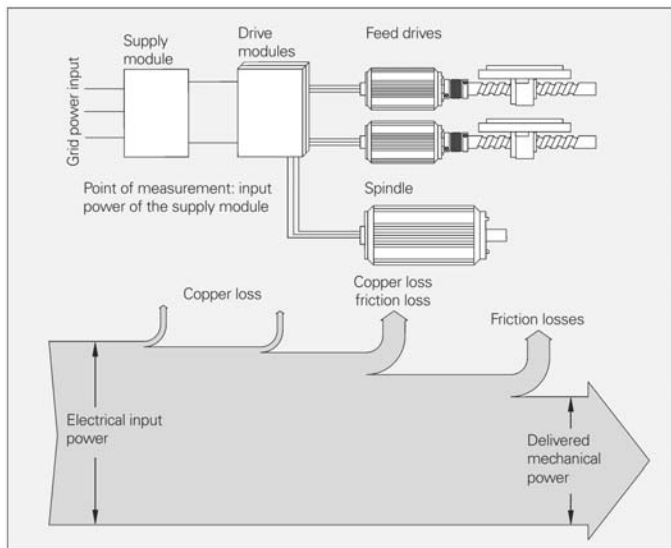
The mean compressed air power changes only slightly in the phases of production readiness, roughing, and finishing. It averages approx. 1.3 kW. Compressed air is required for minimum lubrication of the spindle, tool changing and cleaning the workpiece. In small quantities it is required as sealing air (spindle, tool measurement, linear encoders).

The electrical consumers of the machine include the CNC control with main spindle and feed axis motors as well as numerous auxiliary components (pallet changer, cooling, hydraulics, automation). The power consumption of the auxiliary components varies in the production conditions of readiness, roughing and finishing by only 600 W. With a power consumption of 2.5 kW, the auxiliary components largely determine energy consumption in the production readiness condition. A requirement-oriented deactivation of auxiliary components therefore offers substantial potential energy savings.

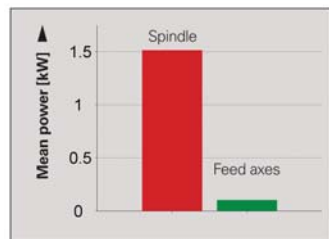
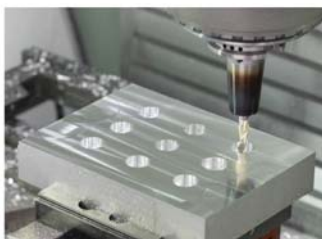
The CNC control package with feed axis motors and main spindle require in this example just 27 % of the total power requirement. In both cases, the mean power consumption of the feed motors is 250 W and is largely determined by the holding power of the vertical axis. Short peak values occur only in the accelerating and braking processes.

Energy efficiency of the drive components

Spindle and feed-axis motors are among the central components of a machine tool. The energy efficiency of a drive component depends on the ratio of delivered power to consumed power and is therefore reflected in the efficiency. The network of drives on a machine tool converts consumed electrical energy to delivered mechanical power. The components of the drive network are a power supply module, drive modules, motors and the mechanical components. Data on efficiency typically refer to the rated power. In other rated values, the efficiency of individual components can vary significantly. HEIDENHAIN supply modules and drive modules attain efficiency values of over 95 %.



Mean power consumption of the drives during rough facing
Face-milling cutter: D = 60 mm, speed: 4 100 rpm, infeed depth: 4 mm



Mean power consumption of the drives during circular pocket milling
Circular pocket: D = 20 mm, end mill: D = 10 mm, lateral allowance: 5 mm, infeed depth 2 x 5 mm, speed: 16 000 rpm

Power consumption during milling

Here the power consumption of a main spindle and the feed drives is itemized.

Example 1: Rough facing

During rough facing with paraxial feed rate the feed motors have a mean power consumption of 200 W. The main spindle reaches its rated power at approx. 19 kW.

Example 2: Circular pocket

The circular pocket is machined with a roughing and a finishing cycle. The mean power of the feed drives here is 100 W. The main spindle needs 1.5 kW of power.

Aspects of Energy Efficiency in Machine Tools *continued from Page 3*

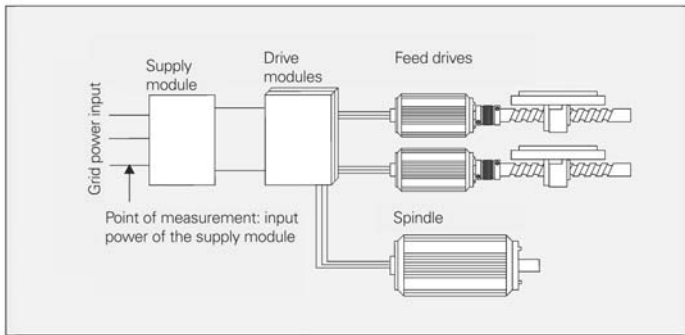
Conclusion

Feed drives contribute only a small share of the total power of a CNC and can therefore contribute little to increasing the energy efficiency. On the other hand, the selection of the spindle can have a significantly cant effect on energy consumption. If a spindle drive operates far below its rated power, the intrinsic losses of the drive increase in proportion, with negative effects on the energy balance. If the spindle limits the maximum possible metal removal rate of a milling process, the milling process inevitably takes longer. The result: energy efficiency decreases due to the base load generated by the auxiliary components. There is also potential for more efficient design of milling processes in the consideration of the efficiency of spindle motors, for example by using synchronous instead of asynchronous motors.

Efficiency of regenerative supply modules

Every acceleration process of a drive requires a braking process in return. The energy from the drives' moving masses is largely reconverted to electrical energy.

The supply modules of the CNC controls from HEIDENHAIN are designed both for regenerative and nonregenerative braking. In a nonregenerative supply module, the kinetic energy released by the braking process is converted to heat by the braking resistors.

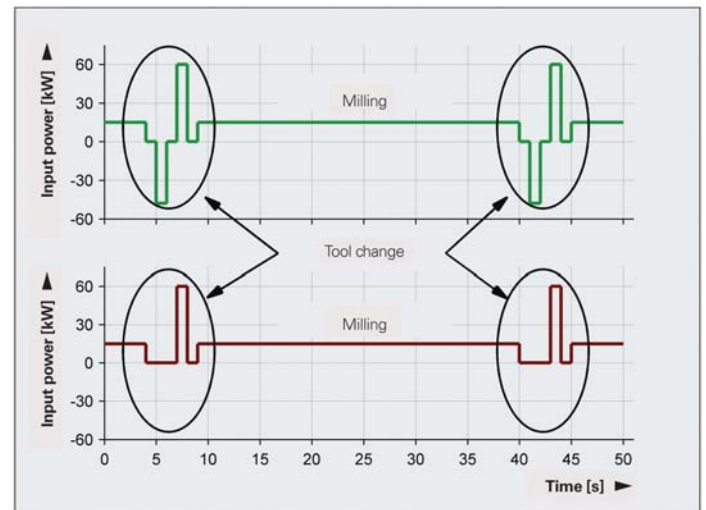


A regenerative supply module returns this energy to the power grid. However, the path required for returning the energy and the necessary components for smoothing the grid power generate losses even when the drives have no power requirement. The power loss increases slightly even when power is not being regenerated. A regenerative supply module operates more efficiently than a nonregenerative module when the regenerated energy more than compensates the higher power loss. The decision for a regenerative or a nonregenerative supply module therefore also depends on the expected type of machine operations.

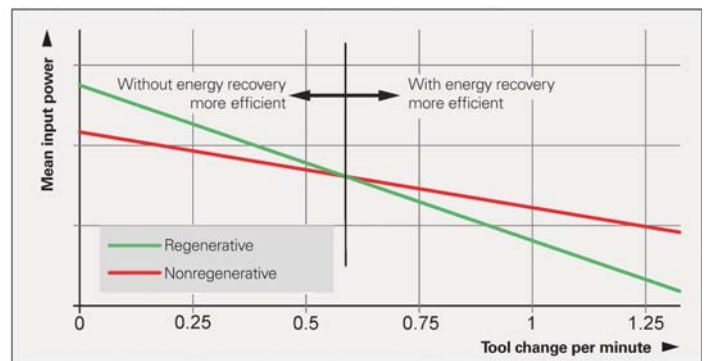
The number of tool changes is important for energy consumption. In one example, a milling operation with 15 kW is interrupted cyclically by a tool change. Starting the spindle requires a peak power of approx. 60 kW. While the regenerative

supply module briefly y returns 48 kW to grid power, with the nonregenerative supply module, the kinetic energy is converted to heat.

Due to the high power requirement of metal cutting, the mean input power sinks the more frequently the milling process is interrupted by tool changes. The regenerative supply module works more efficiently as soon as the time interval between two tool changes is less than 100 s (equals 0.6 tool changes per minute). In processes with many tool changes per minute, a regenerative supply module often proves to be the better choice. During contour milling with infrequent tool changes, the advantages are on the side of the nonregenerative system.



Input power of the supply module—above: regenerative, below: nonregenerative



Efficiency analysis of a supply module in the version with and without regenerative braking

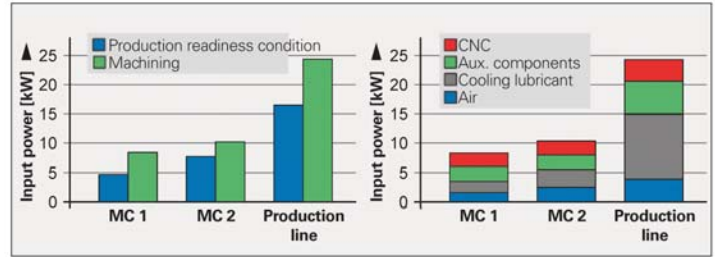
Aspects of Energy Efficiency in Machine Tools *continued from Page 4*

Deactivation of auxiliary components as needed

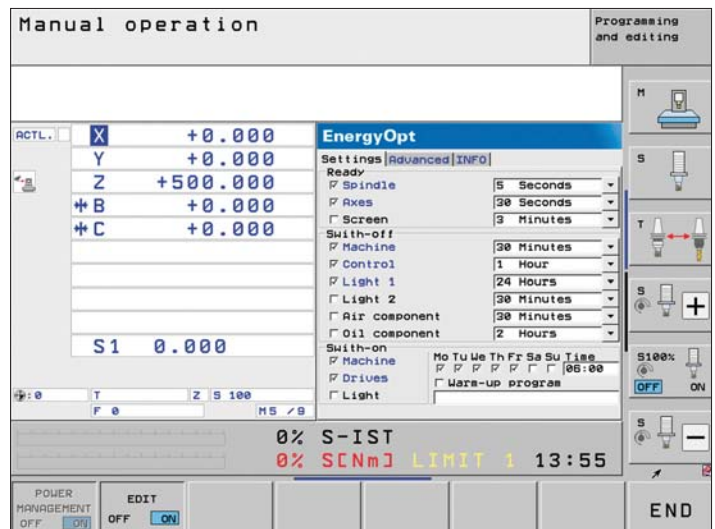
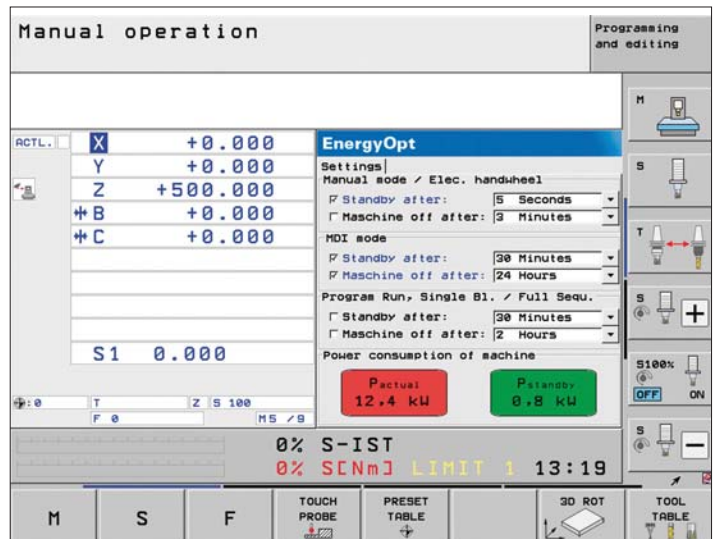
A comparison of the power consumption of two machining centers (MC) and a production line with three machining stations illustrates again the potential: because the consumption of several consumer groups in the ready condition is only slightly reduced, the nonproductive phases must be kept as brief as possible. With machining centers for smaller production batches, energy consumption can be significantly reduced by the selective deactivation of auxiliary components. Beyond this, potential savings result from the use of energy efficient pumps in the coolant/lubricant circuit.

However, consistent switch-off of auxiliary components (hydraulics, spindle cooling) or the compressed-air supply can also have the opposite effect. If the sudden removal of waste heat from auxiliary components or of the temperature-stabilizing effect of media causes thermal displacement in the machine frame, it can result in scrap parts, which impair the energy balance of a production process. The selective switchoff of auxiliary components therefore functions best on machines with little inclination to thermal displacement. In any case, careful planning of the energy saving effects is a prerequisite.

The CNC can be used as the central control unit for the energy management of a machine tool and its associated periphery. The iTNC 530 is provided with special PLC functions for linking events in the production process (e.g. NC stop) with outputs for controlling auxiliary components. Delay times can be assigned to events so that, for example, motors can be locked and disconnected from current after standstill. Functions for deactivating various auxiliary devices, axes, light in the working space, etc. can be created on this basis. These basic functions can be created as desired by the machine tool builder and adapted to the respective machine model. For the user, a further step is helpful, in which the energy management can be adapted to his specific usage habits. In the illustrated example, the deactivation functions (axis locking, standby, emergency off, switch off) can be configured for various operating modes.



Power requirement of three manufacturing processes according to operating conditions and consumer groups



Aspects of Energy Efficiency in Machine Tools *continued from Page 5*

Reduction of machine idle time through optimal support during setup

Because of the relatively high base energy load of machine tools, non-cutting times have a decisive effect on the energy efficiency of a cutting process. To reduce the energy requirement per part, noncutting periods such as tool and set-up times should be kept as small as possible. In principle, whatever increases the machine's productivity is efficient.

Non-cutting times during setup

The values in the blocks of NC programs are given with respect to datums on the workpiece that must first be measured on the fixed workpiece. A workpiece touch probe ensures the fast and safe measurement of datums. Predefined touch probe cycles and a delay-free coupling between the touch probe and control considerably reduce non-cutting time and at the same time increase machining accuracy. Datums can be set automatically using the TS touch probes in combination with the probing functions of the TNC controls. This makes it possible to avoid errors during setup that inevitably result in bad parts.

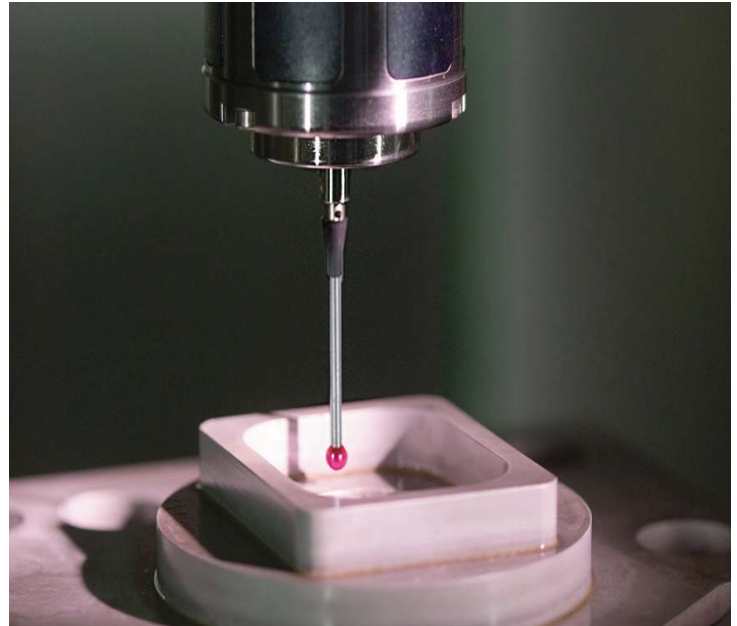
Touch probes can reduce non-cutting time, improve production quality, prevent scrap, and increase productivity. This reduces the energy requirement per manufactured part. The possibilities for reducing non-cutting times are illustrated in these two examples. Here the set-up times are compared with a dial gauge and HEIDENHAIN touch probes on a machine tool with a base load of 4 kW.

Task 1

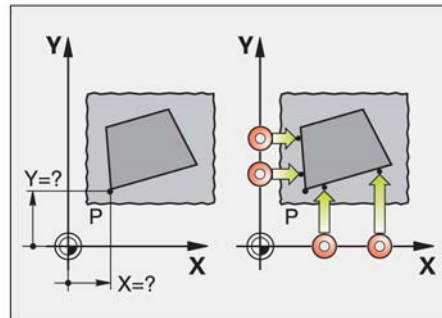
- Align the workpiece blank parallel to the axes
- Set the datum in the working plane at a corner
- Set the tool axis datum at the top surface of the blank

Task 2

- Align a workpiece paraxially using two holes
- Set the datum of the working plane in the center of the first hole.
- Set the tool axis datum at the top surface of the blank



Task 1



Time savings

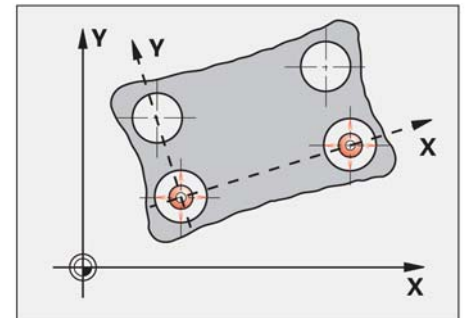
With a TS touch probe from HEIDENHAIN, this setup operation is performed with a time saving of about 4 minutes, or approx. 72 %.

Energy savings

With ten setups per day and 220 working days, 580 kWh are saved per year. That approximately equals the annual energy requirement of five refrigerators of the efficiency class A++.

Touch probe	
	1 min 25 sec
Dial indicator	
	5 min 30 sec

Task 2



Time savings

With a TS touch probe from HEIDENHAIN, this setup operation is performed with a time saving of about 5 minutes, or approx. 77 %.

Energy savings

With ten setups per day and 220 working days, 730 kWh are saved per year. That equals approximately the annual energy requirement of six refrigerators of the efficiency class A++.

Touch probe	
	1 min 30 sec
Dial indicator	
	6 min 30 sec

Aspects of Energy Efficiency in Machine Tools continued from Page 6

Measuring systems for the energy efficient operation of servo-controlled motors

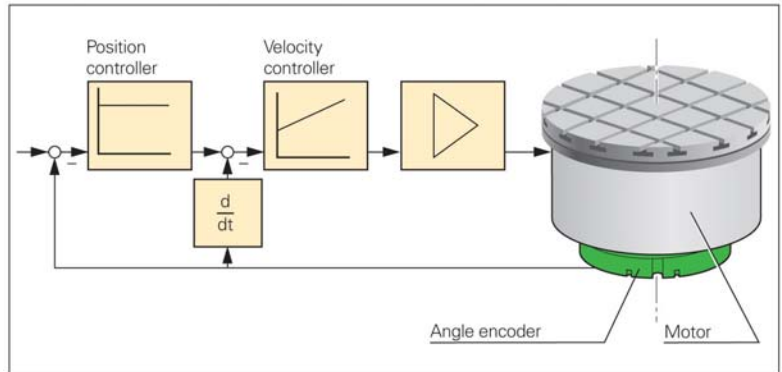
In the control loops of spindle motors and direct-drive feed axes, even the smallest disturbance in the feedback signals can result in large fluctuations in the motor current.

The interpolation of the signal of a position encoder includes short-range deviations within one signal period (interpolation error) typically of approx. 0.5 % of the signal period. If the frequency of the interpolation error increases, the feed drive can no longer follow the error curve. However, additional current components are generated by the interpolation error.

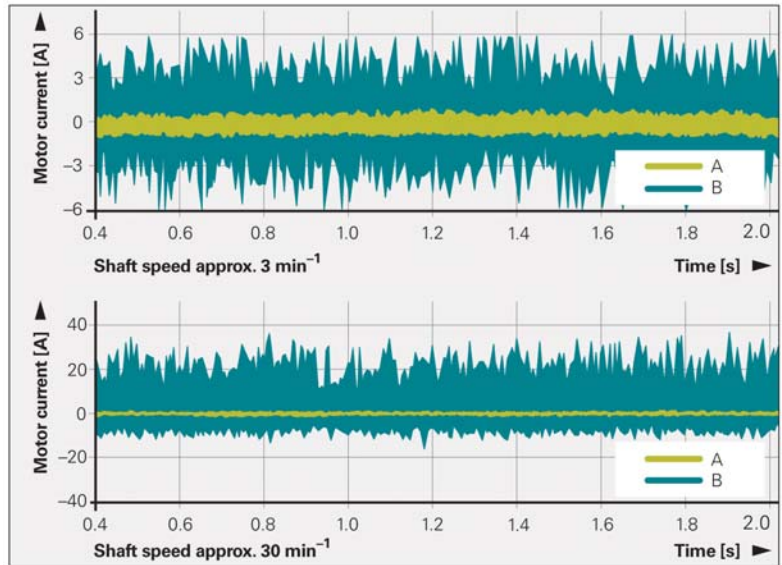
Therefore, if the torque remains constant, the energy consumption and efficiency of the motor get worse. The additional energy required is converted to heat. The heat must typically be dissipated by a motor cooling system, which itself consumes energy.

A comparison of the effects of an optical and a modular magnetic encoder on a rotary table with direct drive illustrates the meaning of high-quality position signals. The RCN 226 angle encoder with 16 384 lines generates only barely noticeable disturbances in the motor current, and develops little heat. Because of the magnetic scanning principle, the encoder has notably fewer signal periods. Significantly cant disturbances occur in the motor current with the same controller settings. For example, at a shaft speed of approx. 30 min⁻¹ the effective value of the current is 15 A greater than for an optical encoder. The consequence is greater heat generation in the motor.

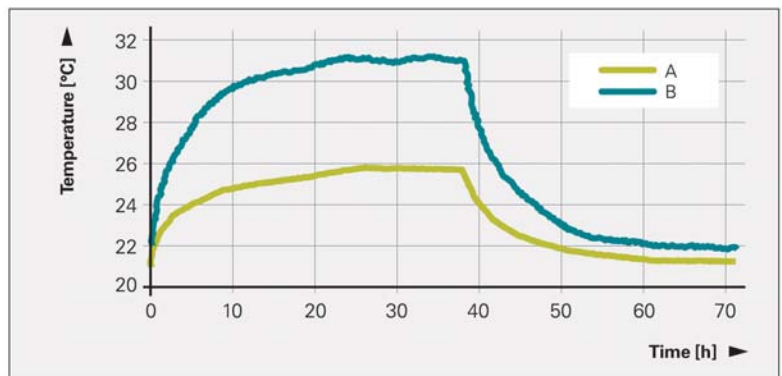
An encoder with low signal quality can result in greater energy loss on the motors. In addition, the additional energy requirement of the active cooling has to be included in the energy balance. To increase the energy efficiency of the motor, the encoders should feature high signal quality.



Control loop with rotational direct drive (torque motors)



Motor current of a direct drive with position encoder
 A: With low interpolation error (optical encoder)
 B: With high interpolation error (modular magnetic encoder)



Temperature variations of a direct drive with optical (A) and magnetic (B) position encoder

Aspects of Energy Efficiency in Machine Tools *continued from Page 7*

Minimizing scrap through closed loop technology

Bad parts reduce the productivity of a manufacturing process and therefore greatly contribute to energy costs per manufactured part. A primary cause of the generation of bad parts is the thermal drift of feed axes running on recirculating ball screws.

The temperature distribution along ball screws can be changed very rapidly by feed rates and moving forces. On machine tools in a semi-closed loop (i.e. without linear encoders, Figure 1 above) the resulting changes in length (typically: 100 $\mu\text{m}/\text{m}$ within 20 min.) can cause significantly cant flaws in the workpiece.

If a linear encoder is used for measurement of the slide position (Figure 1, below), an increase in the ball screw's temperature (Figure 2) has no influence on accuracy. This is referred to as operation in a closed loop because the mechanical errors of the drive are measured in the position control loop and are therefore compensated.

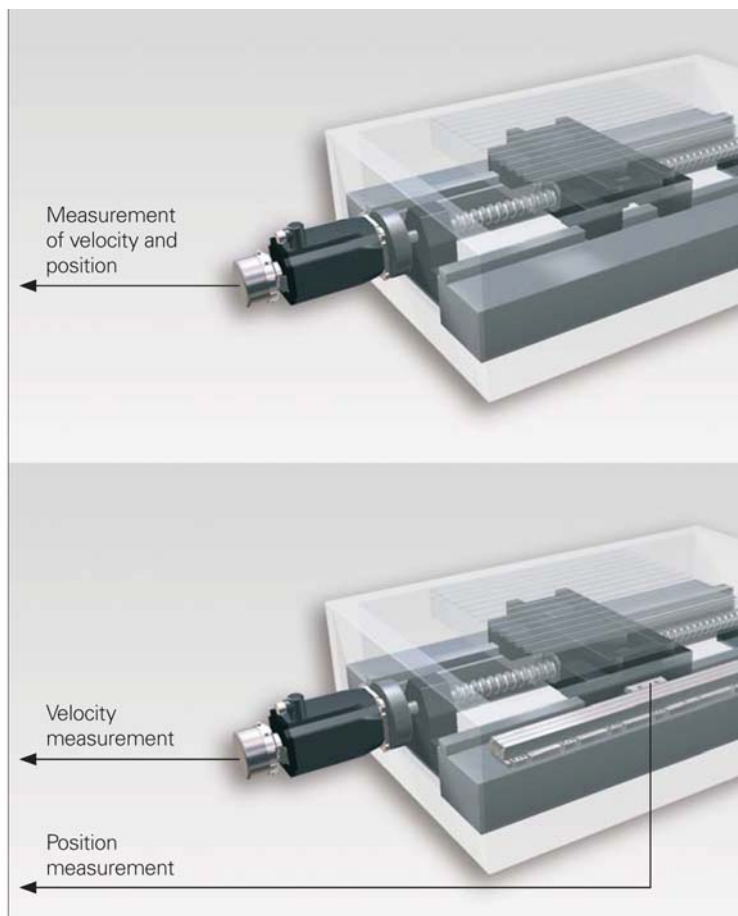


Figure 1

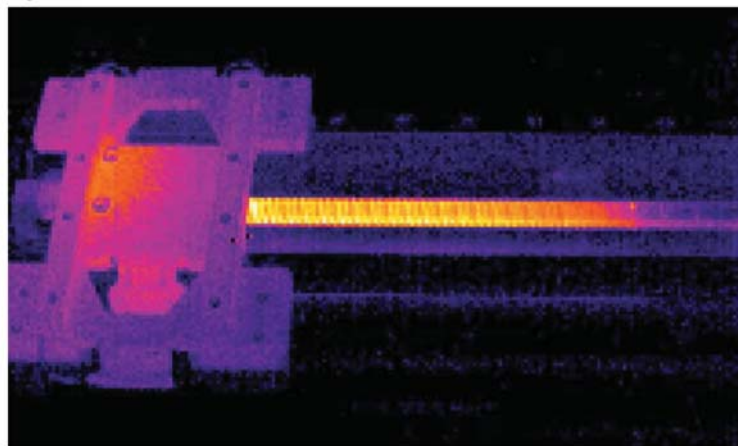


Figure 2

Aspects of Energy Efficiency in Machine Tools *continued from Page 8*

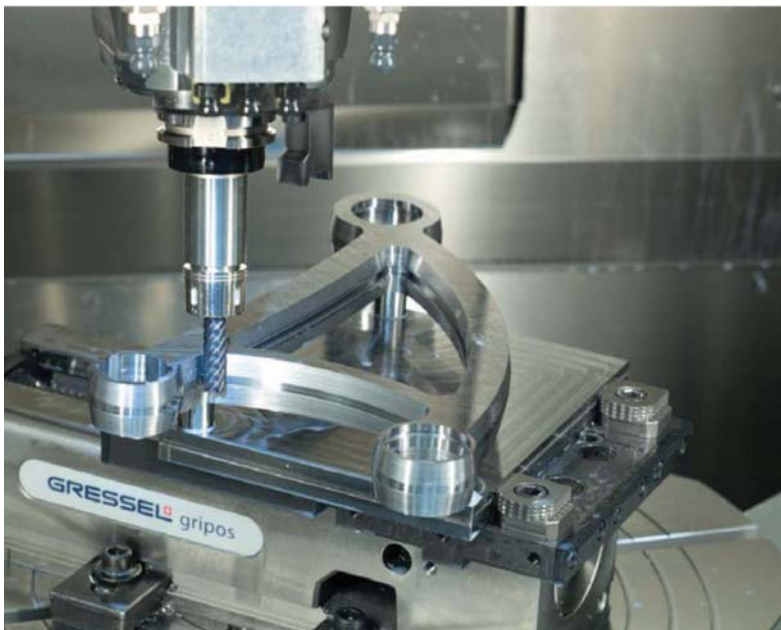
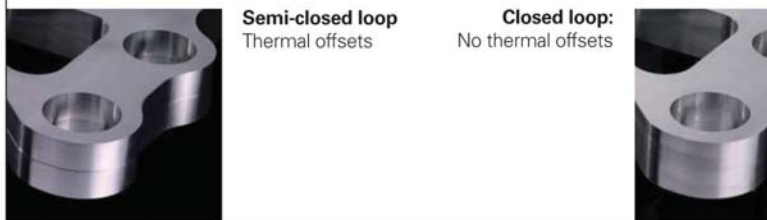
Example: Machining a coupling lever for an airfoil.

In order to evaluate the accuracy that can be achieved in the manufacture of small batches, a coupling lever is manufactured twice from the same workpiece blank. The second workpiece is simply machined 10 mm below the first. Between the two machining operations, twenty machining cycles for the same part are executed above the blank. In semi-closed-loop operation, the contour of the second workpiece deviates from the contour of the first workpiece, as is shown by an edge. In the semi-closed loop, this offset between the workpieces is 44 μm . With the use of linear encoders in a closed loop, no edge results. A reproducible accuracy from the very first part is thus guaranteed.

Energy savings in a closed loop

The manufacture of 22 coupling levers in this example takes 2 hours. The bore of two holes at a distance of 350 mm is to be manufactured with the tolerance of IT7, which allows error of $\pm 28 \mu\text{m}$. To manufacture 22 good parts in a semiclosed loop, the machine first has to run the NC program cyclically for 25 min in order to ensure compliance with the IT7 tolerance. During warm-up, the energy consumption is only approx. 10 % below the value for milling.

As a result, the energy costs per good part in the semi-closed loop, are 19 % higher than for manufacturing 22 parts in a close loop with linear encoders. If 50 parts are manufactured on a milling machine in the semi-closed loop with preceding warm-up phase, a power requirement during milling of 8 kW on 220 working days ensues for an additional energy requirement of 660 kWh.



Aspects of Energy Efficiency in Machine Tools *continued from Page 9*

Conclusion

Analyses of metal-cutting processes show that the power consumption of a CNC control with feed-axis and spindle motors frequently comprise only 25 to 30 % of the total required power. On the other hand, the auxiliary components in the machine or its environment play a dominant role in the energy balance.

There are numerous possibilities for a more efficient use of energy. Significant savings can be realized through the proper selection of components for a machine tool alone. Whether a CNC control should feature energy recovery to line power depends on the frequency of tool changing during milling operations or workpiece changes during turning. The regenerated energy is then available for other consumers in the machine's environment.

Further energy savings are possible depending on whether spindles can be closely adapted in their speed and torque to the machine's range of operations. If a universal design of the spindle is required, the spindle motor may have to be run at low efficiency rates—with the expected consequences for energy consumption. The selection of the position encoder can have a decisive effect on the efficiency of spindle motors and direct drives. Encoders with insufficient resolution and accuracy generate high current values in the position control loop.

Position encoders with high line counts are essential for the high efficiency of servo-controlled drives. It has been proven that linear encoders increase accuracy and therefore contribute to higher precision and reproducibility of machining results. This makes it possible to reduce waste in production and, as an immediate result, the energy requirement per good part. Components for processing cooling lubricants, for supplying compressed air and hydraulics and for cooling occupy a dominant share of the total power. If a machine has particularly efficient pump motors, this alone can save significant amounts of energy. Another opportunity is offered by energy management on the CNC control with selective switch-off of components. This makes it possible, for example, to delay the switch-off of pump drives after a machining operation has ended.

Even in the production process itself, potential energy savings can be found. With the relatively high base load of machine tools, a reduction of nonproductive phases is a high priority. Here the CNC controls from HEIDENHAIN can help in many ways. Beginning with ideas for user-friendly program editing to functions for workpiece setup with HEIDENHAIN touch probe systems, all the way to more efficient and exact motion control in three and five-axis machining, users profit from the know-how collected by HEIDENHAIN in decades of experience in metal-cutting technology.



HEIDENHAIN's Museum Donation Makes an Impact



Photo Courtesy of Medora Hebert

HEIDENHAIN's Danny Vitullo showcases Donation at APM

"This significant addition from HEIDENHAIN helps us showcase the old with the new," said Ann Lawless, APM Executive Director, "This is an incredible leap forward."

"Here at the American Precision Museum (APM), we need to be able to share the news about the significance of machine tools to the development of our world, as well as into our future" said Ann Lawless, APM Executive Director, "and this wonderful and forward-thinking gift from HEIDENHAIN is now helping us better do that." Lawless is referring to HEIDENHAIN'S recent donation of a 1980s Bridgeport 9x48 Series One mill and a new Acu-Rite MILLPWR® 3 control, a HEIDENHAIN product.

Both machines were delivered to APM this summer, along with HEIDENHAIN Product Specialist Danny Vitullo who, in July, dedicated a week to setup and training the summer interns, local high school students primarily from the River Valley Technical Center (RVTC), in its operation. RVTC (Springfield, VT) is in its fourth year of partnering with the museum.

APM is located in Windsor, VT within the 1846 Robbins & Lawrence Armory where the concept of interchangeable parts was borne, and gives visitors a look into the history of early machines and their impact on society. Besides the largest collection of static



historic machine tools in the nation, APM also houses a Working Machine Shop section where now nine pieces of equipment are on demonstration. "This new huge variable speed machine given to us by HEIDENHAIN is a game-changer for us," said Lawless. "This is an incredible leap forward."

APM's Working Machine Shop houses equipment from as early as a 1890s hand-operated shaper to a 1990s 3-axis table-top CNC mill for light machines.

"This new Bridgeport and control are great additions to the shop," explained Chris Gray, instructor of the RVTC's Mechanical Design and Innovation Program where most of the high school intern operators have originated. "Thanks to Danny's work, the Bridgeport operates like a brand new machine. It's a real pleasure to operate a vertical mill

where everything is tight and really accurate. The students have worked through the tutorials included in the Acu-Rite control manual and now easily run several of those parts. It's a really good control."

"This significant addition from HEIDENHAIN helps us showcase the old with the new," added Lawless.

Rick Korte, president of HEIDENHAIN Corporation, added, "We enthusiastically support the efforts of APM and are proud to be members of such a significant and historically

strong representation of precise manufacturing and the Industrial Revolution. The many technological advancements we enjoy today are due to the development of machine tools of yesterday, and there's no end in sight. Our donation to this museum helps showcase just one more aspect."

Open daily from Memorial Day weekend through October, visitors to the APM will see collections of not only significant machine tools, but also early firearms, measuring

devices, sewing machines, typewriters and other unique products of manufacturing. Museum information is available at www.americanprecision.org



NEW TNC 640 Control Introduced for Milling and Turning Machines

Just introduced at the EMO 2011 show in Germany is the TNC 640 control, the first milling-machine control by HEIDENHAIN offered with optional turning functions. With this control, HEIDENHAIN is expanding its selection of high performance controls into the complete-machining market.

Suited for high speed cutting and for 5-axis machining on machines with up to 18 axes, the HEIDENHAIN TNC 640 control can now easily enable turning operations on a milling machine. The turning operations can be programmed in plain text, just like the familiar milling operations. Comprehensive turning cycles are available for frequently repeated operations, such as roughing,



finishing recessing and thread cutting.

The TNC 640 is based on a new and completely digital interface hardware platform called HSCI. This interface significantly reduces cabling during setup. This control's new optimized user interface also gives users greater transparency during programming, presents functions better and displays status information more clearly. The new smartSelect function makes it easier, for example, to select cycles, and syntax color highlighting improves

clarity for the editing of machining programs.

HEIDENHAIN's TNC 640 also boasts a new ergonomic design with a 19" screen, and an operating panel with stainless steel fronts.

Technical Tidbit:

Accuracy, Repeatability and Resolution- What's the Difference?

by Jimmy Rago, HEIDENHAIN Product Specialist

Three terms that are well used in the feedback industry are "accuracy", "repeatability" and "resolution". These words are sometimes used interchangeably. This causes confusion when choosing an encoder or discussing encoder specifications with another person. A clear definition and illustration of each term may help to clear up this confusion.

Accuracy - designates how close a measured value is to the true quantity of what is being measured. Without comparison to a standard, accuracy cannot be determined. The accuracy of HEIDENHAIN products is always stated in comparison to a formal, agreed upon standard in the industry.

Repeatability - describes how well a system or device can reproduce an outcome in unchanged conditions. In some applications, repeatability is more important than accuracy. If the system is repeatable, an error can be mapped and compensated for.

Resolution - is the smallest increment the system can display or measure. A system can have a high resolution with poor repeatability and accuracy. Resolution is a primary concern in applications regarding speed control or surface finish.

Think of a clock. If the clock is mechanically sound, it should be very repeatable. Each movement of the second hand should happen at a constant interval. The clock can be used to reliably time events, from start to finish, but it may display the incorrect time. Until the time on the clock is compared

to some established measurement of time, there is no way to tell how accurate the clock is. Once compared to a known standard, the accuracy of the clock can be determined. The resolution of the clock can be determined by the number of ticks in a minute or the amount of increments shown on the face. If the clock has no second hand, the highest resolution you can achieve is to half minutes. If the clock only had an hour hand, you would only be able to determine the closest half hour. Most people would prefer to use an accurate and repeatable clock, with a decent resolution. The importance of these three factors is wholly dependent on the application.

Another example would be hits on a target. A rifle aimed at the bullseye and fired from the same position each time, puts bullet holes in a target. If the holes have a large spread, the rifle is neither accurate nor repeatable. If the holes are tightly grouped, but off from the bullseye, the rifle is repeatable but inaccurate. If the rifle is accurate and repeatable, the bullet holes will be in the bullseye. The sights of the rifle can be used to compensate for the inaccuracy of the rifle.

HEIDENHAIN offers many measurement products that cover varying degrees of accuracy, repeatability and resolution in order to meet the needs of customer applications. If you have any questions about these topics or our products, please let us know.

Jimmy Rago, 847-519-4213

HEIDENHAIN on Worldwide Exhibit

By Chris Weber, National Sales Manager, Machine Tool Division



Chris Weber
National Sales Manager
Machine Tool Division

At this year's recent EMO show in Hanover, Germany, HEIDENHAIN introduced a number of new technologies and products. Since R&D is really at the heart of HEIDENHAIN, this should come as no surprise to anyone. This is what we do.

At the September show, one of HEIDENHAIN's new product introductions was the much-anticipated TNC 640, a control suited for both milling and turning applications. Geared

towards multi-operation machining, this control features the well accepted HEIDENHAIN plain language, with additional turning cycles adopted from the ManualPlus and PILOT turning controls, and will feature a new stainless steel design with a standard 19" color flat panel display. More information on this product is available in this Machine Tool eNewsletter's "Product Highlight" section.

As an addition to our comprehensive probe offering, on display was also the newest touch probes from HEIDENHAIN. The TS 460 work piece probe and TT 460 tool probe are the very first to be offered with both infra-red and radio signal transmission capabilities. This makes them versatile for all machine tool applications where signal speed and transmission distance are critical.

Our "Accuracy Campaign" continued with a display of a new test part highlighting the benefits of proper feedback for fast accurate contouring and superior work piece finish.

Our latest feedback devices for linear and angular applications featuring integrated functional safety features were also present. The new RCN series and LC series were featured.

Once again, HEIDENHAIN's presence at this large international machine tool show demonstrates our commitment to the industry and is continued proof of HEIDENHAIN as a driving force in worldwide control and feedback solutions.

CONTACT INFORMATION

For more information about HEIDENHAIN and any of the products or services mentioned here, please feel free to contact us.



HEIDENHAIN CORPORATION

333 E. State Parkway, Schaumburg, IL 60173
1-800-233-0388 • info@heidenhain.com
www.heidenhain.com